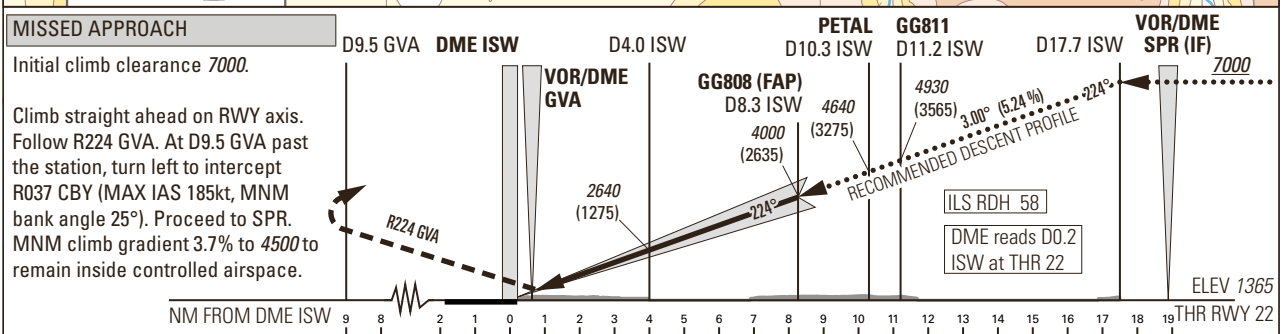
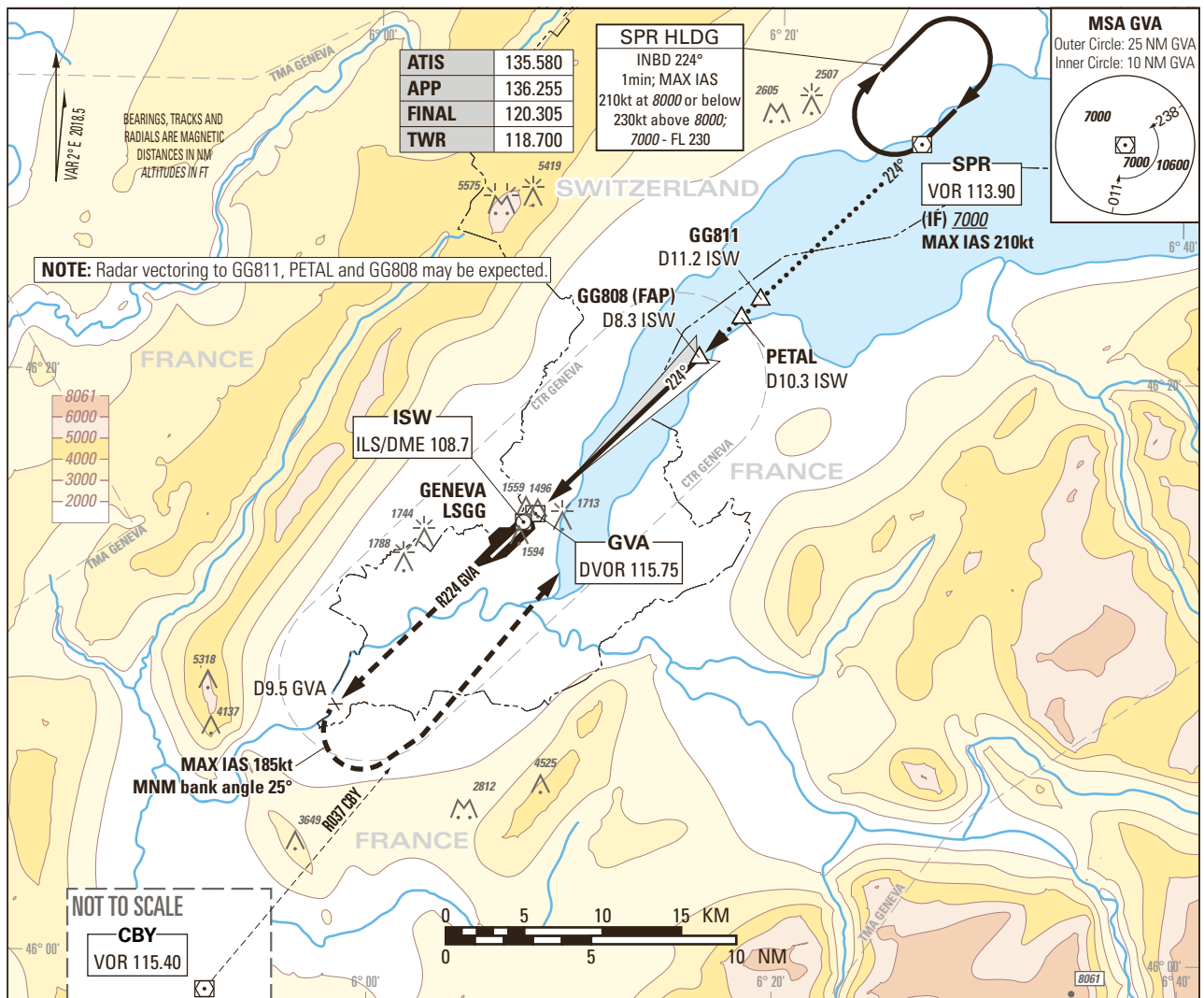


Instrument Approach Chart
(IAC) - ICAO

AD ELEV 1411ft

TRANSITION LEVEL by ATC
TRANSITION ALTITUDE 7000

GENEVA LSGG
ILS RWY 22
CAT II & CAT III



OBSTACLE CLEARANCE ALTITUDE (HEIGHT) ¹⁾					
Missed APCH climb gradient requirement					
	A	B	C	D	
CAT I pressure altimeter	2.5%	2018 (653)	2026 (661)	2035 (670)	2048 (683)
CAT I pressure altimeter		1530 (165)	1538 (173)	1548 (183)	1560 (195)
CAT I radio altimeter	3.4% to 4500	1432 (67)	1438 (73)	1449 (84)	1465 (100)
CAT II radio altimeter and autopilot		1427 (62)	1436 (71)	1447 (82)	1464 (99)
DECISION ALTITUDE (HEIGHT) ¹⁾					
	A	B	C	D	
CAT I pressure ²⁾ altimeter	3.4% to 4500	1565 (200)			
CAT II radio altimeter and autopilot ²⁾		1465 (100)			
Circling ^{3) 4)}		2100 (689)	2150 (739)	2400 (989)	

DIST DME ISW	2	4	6	8	8.3	10	12	14	16
recommended	2000	2640	3280	3910	4000	4550	5190	5820	6460
CROSSING ALT									
ROD	GS kt	90	110	130	150				
	FT/MIN	478	584	690	796				

NOTE

¹⁾ Above THR elevation 1365ft.
²⁾ Radio altimeter reading at CAT I DH 216ft, at CAT II DH 108ft, for lower operating minima (DH and RVR) PPR FOCA.
³⁾ Above aerodrome ELEV 1411ft, circling on request of ATC under special conditions and north of RWY only, speed (MAX IAS 180kt) and radius for category D as for category C aircraft.
⁴⁾ Circling must remain inside CTR at all times.

COR: MSA, RDL CBY, Circling minima (WEF 02NOV2023)

THIS PAGE INTENTIONALLY LEFT BLANK