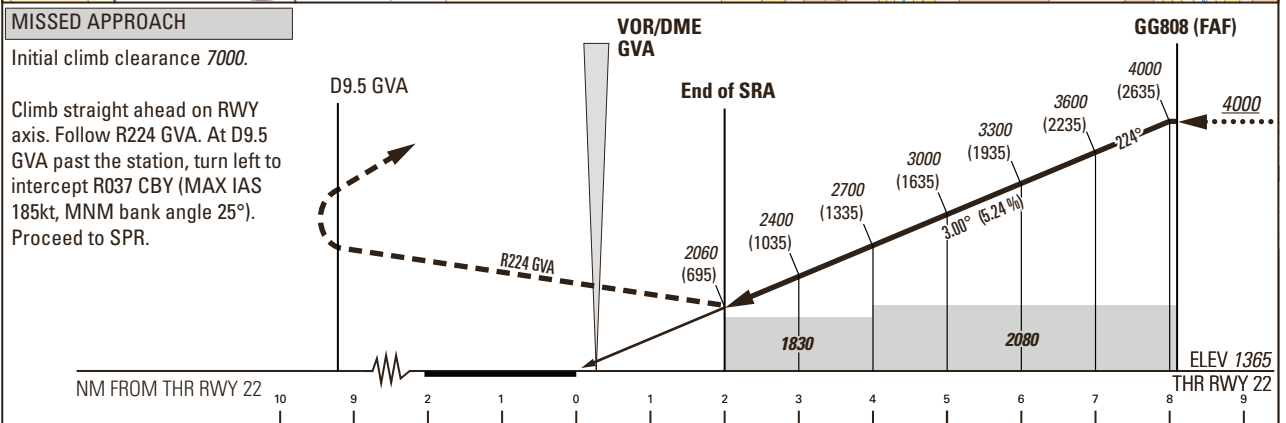
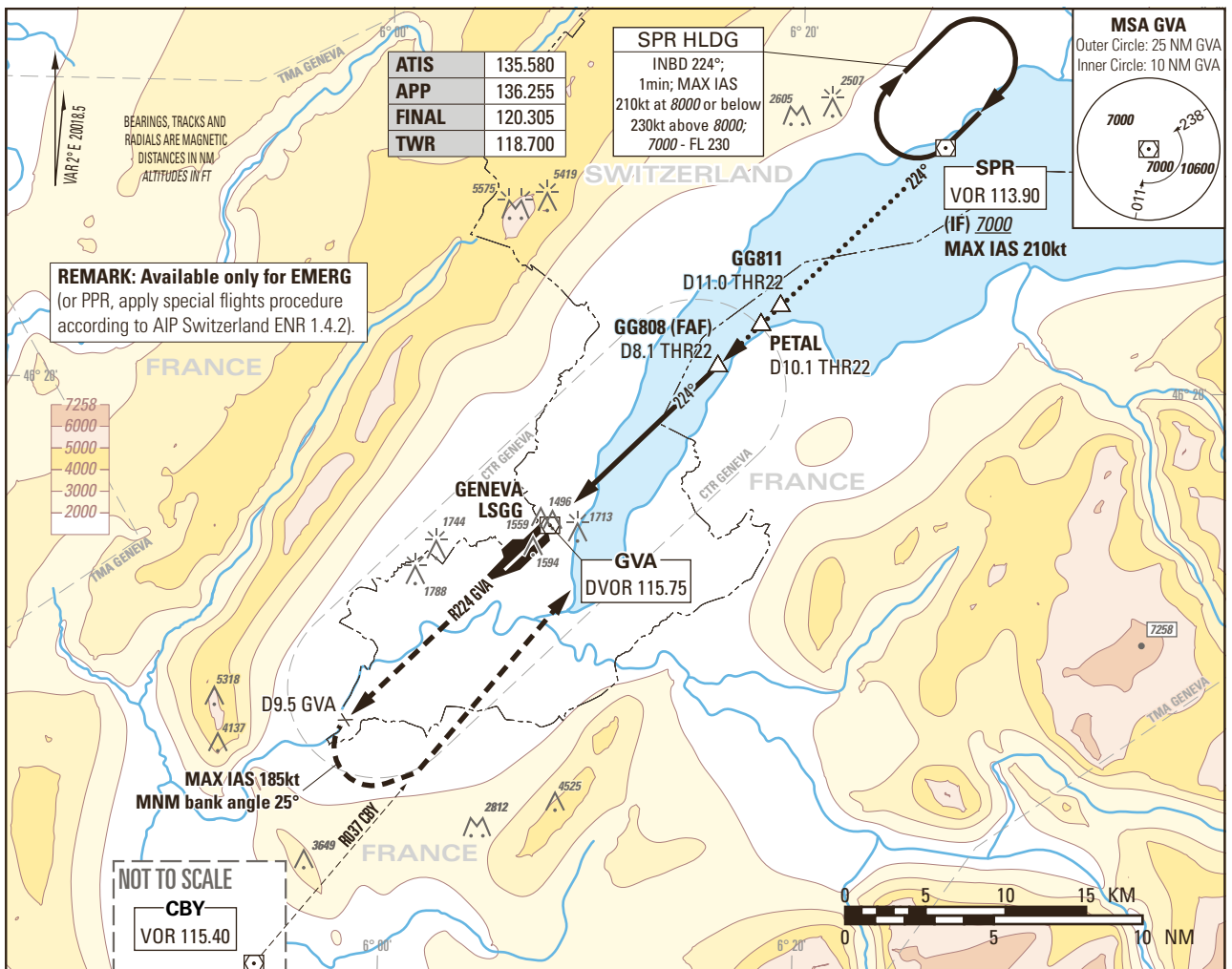


Instrument Approach Chart  
(IAC) - ICAO

AD ELEV 1411ft

TRANSITION LEVEL by ATC  
TRANSITION ALTITUDE 7000

GENEVA LSGG  
SRA RWY 22



OBSTACLE CLEARANCE ALTITUDE (HEIGHT)				
	A	B	C	D
Surveillance Radar Approach	2060 (695)			
Circling <sup>1)2)</sup>	2100 (689)	2150 (739)	2400 (989)	

ROD	GS kt	90	110	130	150
	FT/MIN	478	584	690	796

RADAR FIX	2	3	4	5	6	7	8
recommended crossing ALTITUDE (HEIGHT)	2060 (695)	2400 (1035)	2700 (1335)	3000 (1635)	3300 (1935)	3600 (2235)	4000 (2635)

**CAUTION**  
0.8 NM before THR22 Visual Segment Surface (VSS) penetrated by power lines and trees up to 1527ft AMSL.

**NOTE**

<sup>1)</sup> Above aerodrome ELEV 1411ft, circling on request of ATC under special conditions and north of RWY only, speed (MAX IAS 180kt) and radius for category D as for category C aircraft.

<sup>2)</sup> Circling must remain inside CTR at all times.

COR: MSA, RDL CBY, MOCA, Circling minima and VSS (WEF 02NOV2023)

THIS PAGE INTENTIONALLY LEFT BLANK