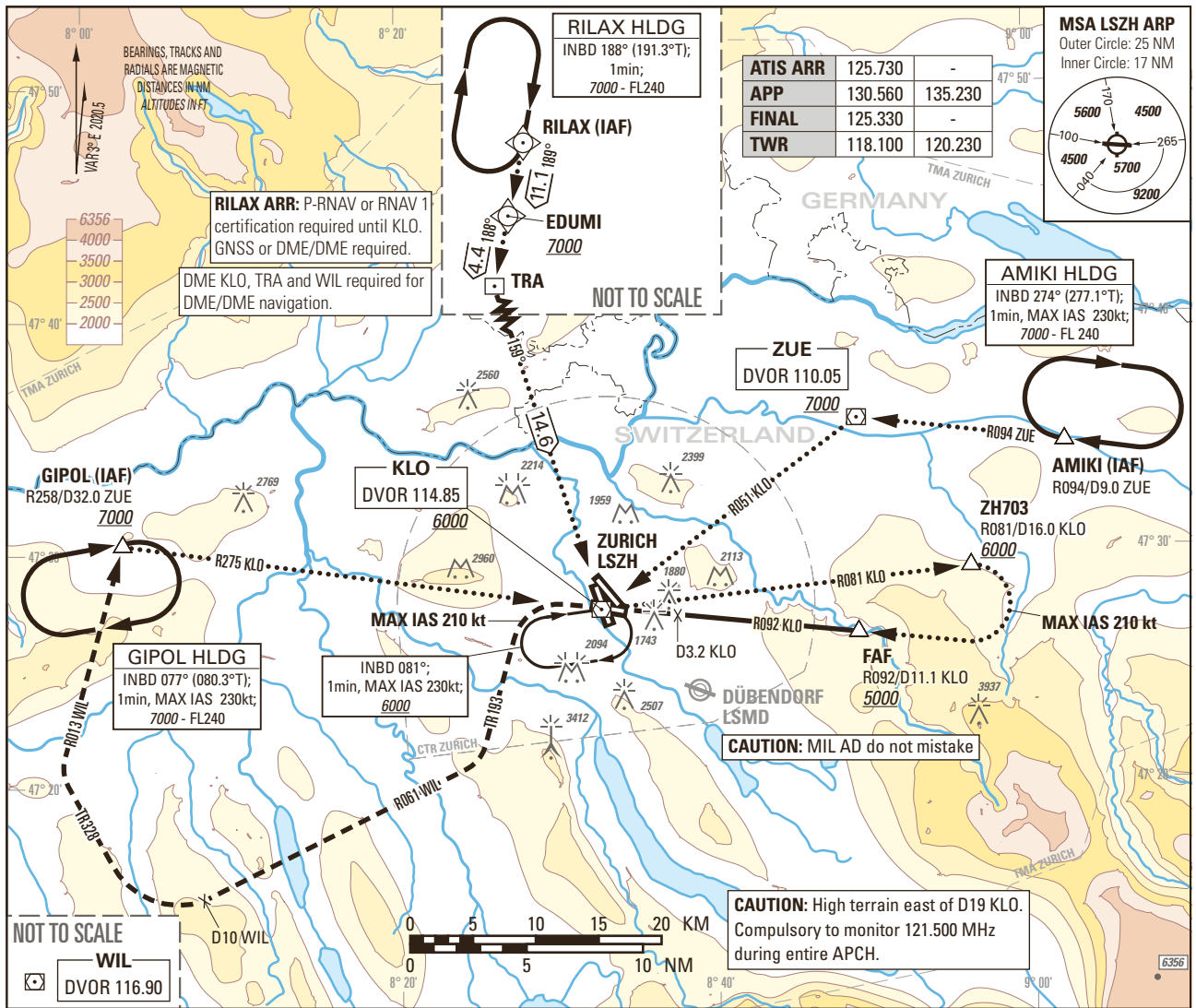


Instrument Approach Chart
(IAC) - ICAO

AD ELEV 1417ft

TRANSITION LEVEL by ATC
TRANSITION ALTITUDE 7000

ZURICH LSZH
VOR RWY 28



MISSED APPROACH

Initial climb clearance 4000.

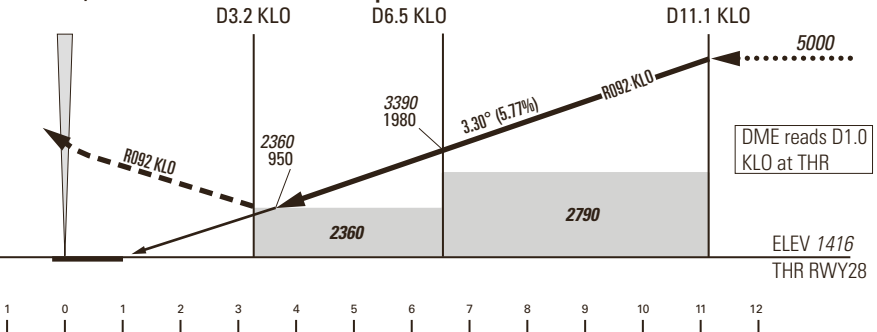
Climb on R092 KLO. When passing KLO continue on R272 outbound from KLO. At D1.6 KLO past the station turn left (MAX IAS 210kt) on TR193. When established on TR193 continue climb to 7000. Intercept R061 inbound to WIL. At D10.0 WIL to the station turn right. Establish TR328 to intercept R013 outbound from WIL. Proceed to GIPOL. MNM climb gradient 4.6% up to 5900 due to ASP restrictions.

KLO VOR/DME

MAPt

Step Down Fix

FAF



| Missed APCH climb gradient requirement | STRAIGHT-IN APPROACH | | | |
|----------------------------------------|----------------------|---|---|---|
| | A | B | C | D |
| 2.5% | 2360 (950) | | | |

| OBSTACLE CLEARANCE ALTITUDE (HEIGHT) | | | | |
|--------------------------------------|------------|--|--|--|
| 2.5% | 2360 (950) | | | |

| ROD | GS kt | 90 | 110 | 130 | 150 |
|-----|--------|-----|-----|-----|-----|
| | FT/MIN | 526 | 642 | 759 | 876 |

| DME KLO | 4 | 5 | 6 | 7 | 8 | 9 | 10 | 11 |
|----------------------------------------|-------------|-------------|-------------|-------------|-------------|-------------|-------------|-------------|
| RECOMMENDED CROSSING ALTITUDE (HEIGHT) | 2520 (1110) | 2870 (1460) | 3220 (1810) | 3570 (2160) | 3920 (2510) | 4270 (2860) | 4620 (3210) | 4970 (3560) |

CAUTION

- Do not confuse RWY 32 with RWY 28. Bright floodlight slightly N of APCH at D1.5 KLO.
- Expect turbulences on short final during south-westerly winds.
- 2.0NM BFR THR28 visual segment surface (VSS) penetrated by hills up to 1990ft AMSL.

REMARK

- Obstacle limitation and restriction according to non-instrument RWY criteria.

COR: WIL VOR renewed to DVOR (WEF 15JUN2023)

THIS PAGE INTENTIONALLY LEFT BLANK