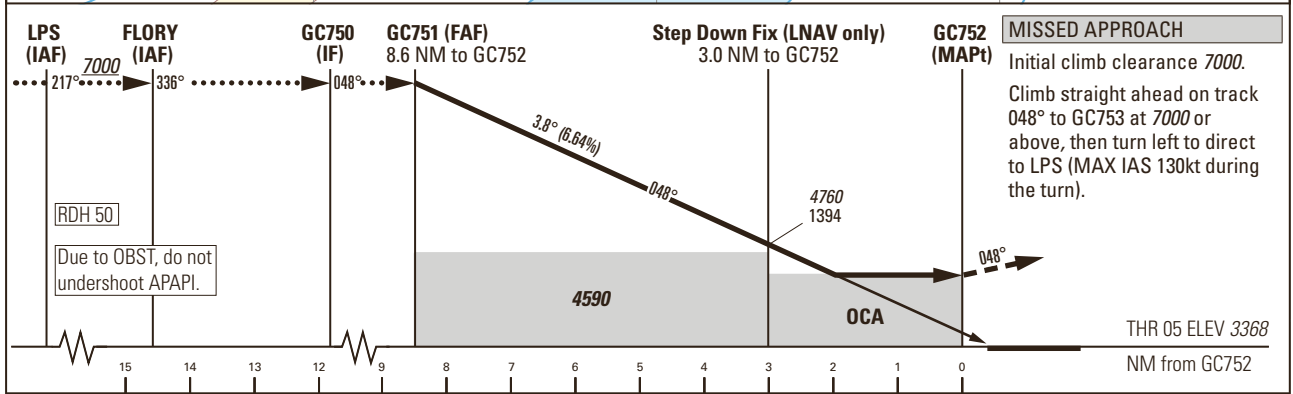
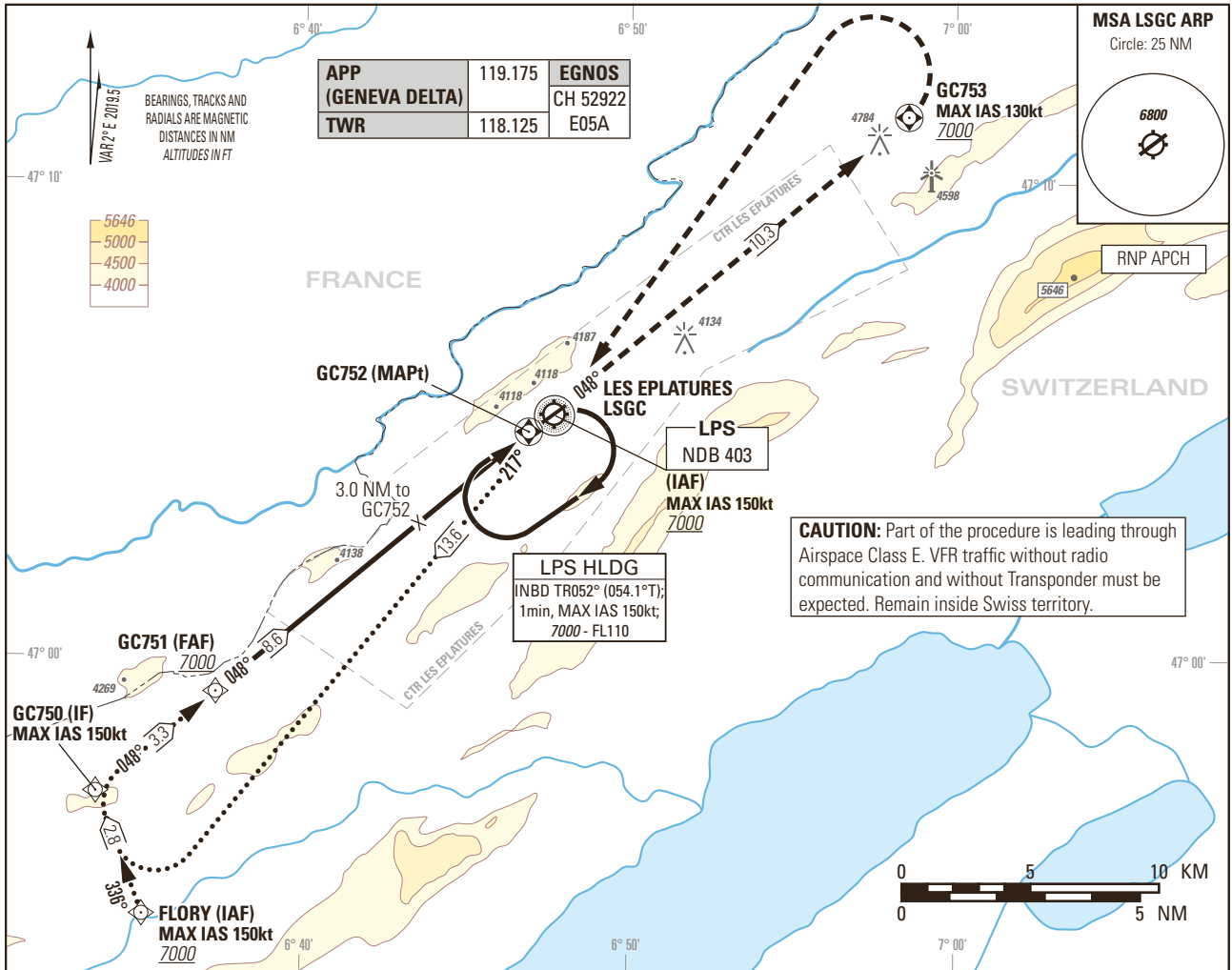


Instrument Approach Chart  
(IAC) - ICAO

AD ELEV 3368ft

TRANSITION LEVEL by ATC  
TRANSITION ALTITUDE 7000

LES EPLATURES LSGC  
RNP RWY 05  
4° OFFSET RIGHT  
ACFT CAT A/B



Missed APCH climb gradient requirement	STRAIGHT-IN APPROACH	
	A	B <sup>2)</sup>
	OCA(H) LPV CAT I	
2.5%	4194 (826)	4210 (842)
5.0%	3950 (582)	3966 (598)
	OCA(H) LNAV	
2.5%	4380 (1014)	
Circling <sup>1)</sup>	4640 (1272)	5010 (1642)

ROD	GS kt	90	110	130	150
	FT/MIN	605	740	874	1009

GC752 DIST	8	7	6	5	4	3	2	1
recommended CROSSING ALT	6650	6240	5840	5440	5030	4630	4230	3820
recommended CROSSING HGT	3282	2872	2472	2072	1662	1262	862	452

**REMARK**  
AIRAC date MAR - OCT 31: Intense GLD ACT within APCH Sector and ATS Routes.

**CAUTION**  
On 3.8° APCH angle and GS > 140kt resulting ROD > 1000ft/min.  
1.3 NM BFR THR 05 Visual Segment Surface (VSS) penetrated by trees up to 3730ft AMSL.  
Non-standard APCH angle.  
Final APCH TR offset by 4° right from RWY CTRL intercepting the RWY CTRL 597m before THR05.

**NOTE**  
<sup>1)</sup> Circling shall remain within CTR limits.  
<sup>2)</sup> Higher CAT of ACFT may use the same PROC if they comply with the CAT B restrictions.

Input data

Operation Type	0
SBAS Provider	1 (EGNOS)
Airport Identifier	LSGC
Runway	05
Runway Letter	0 (None)
Approach Performance Designator	0
Route Indicator	
Reference Path Data Selector	0
Reference Path Identifier	E05A
LTP/FTP Latitude	470453.9575N
LTP/FTP Longitude	0064714.7400E
LTP/FTP Ellipsoidal Height (metres)	1076.8
FPAP Latitude	470529.0145N
Delta FPAP Latitude (seconds)	35.0570
FPAP Longitude	0064816.5730E
Delta FPAP Longitude (seconds)	61.8330
Threshold Crossing Height	50.0
TCH Units Selector	0 (feet)
Glidepath Angle (degrees)	3.80
Course Width (metres)	105.00
Length Offset (metres)	0
HAL (metres)	40.0
VAL (metres)	35.0

Output data

Data Block	10 03 07 13 0C 05 00 00 01 35 30 05 8B 8B 34 14 68 B0 E9 02 10 3E E2 11 01 12 E3 01 F4 01 7C 01 64 00 C8 AF AF 98 FA DC
Calculated CRC Value	AF98FADC

Required Additional Data

ICAO Code	LS
LTP/FTP Orthometric Height (metres)	1026.5