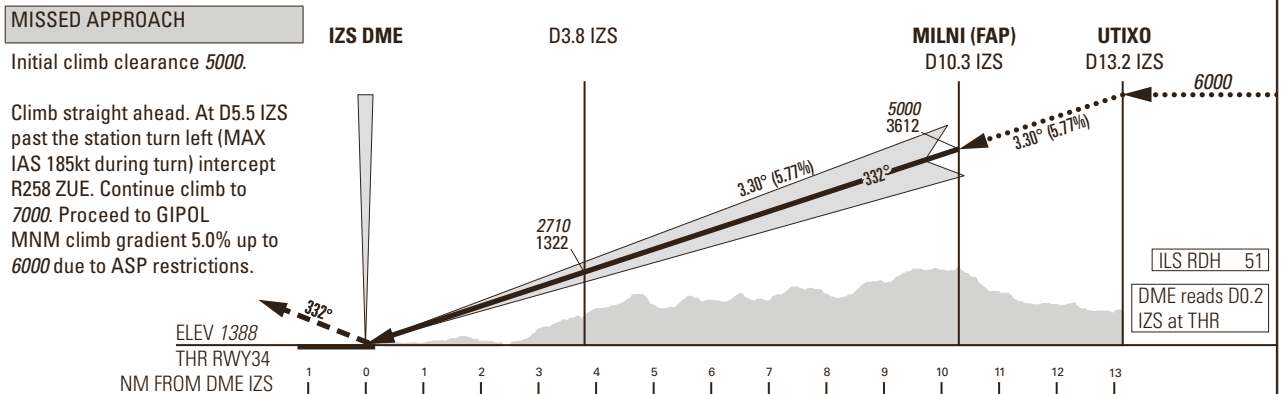
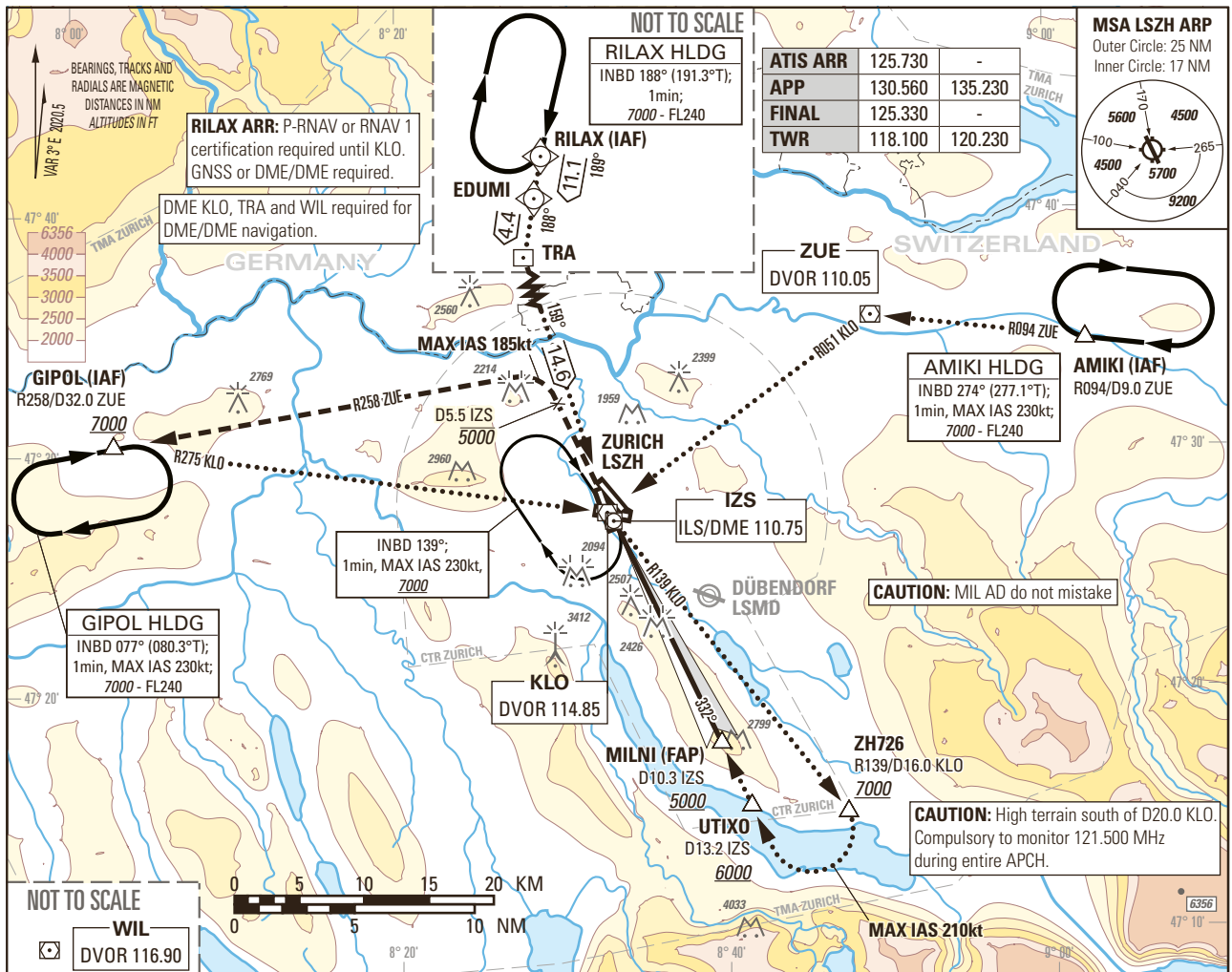


Instrument Approach Chart
(IAC) - ICAO

AD ELEV 1417ft

TRANSITION LEVEL by ATC
TRANSITION ALTITUDE 7000

ZURICH LSZH
ILS RWY 34



Missed APCH climb gradient requirement	STRAIGHT-IN APPROACH					ROD	GS kt	90	110	130	150		
	A	B	C	D	D _L		FT/MIN	526	642	759	876		
OBSTACLE CLEARANCE ALTITUDE (HEIGHT)													
2.5%	pressure altimeter	1555 (167)	1564 (176)	1574 (186)	1585 (197)	CAUTION							
Nuisance GPWS glideslope warning may be expected below 100ft THR.													
DECISION ALTITUDE (HEIGHT)													
2.5%	pressure altimeter	1588 (200)											
IZS DME													
		2	3	4	5	6	7	8	9	10	11	12	13
RECOMMENDED CROSSING ALTITUDE (HEIGHT)		2090 (710)	2440 (1060)	2790 (1410)	3140 (1760)	3490 (2110)	3840 (2460)	4190 (2810)	4540 (3160)	4890 (3510)	5240 (3860)	5590 (4210)	5940 (4560)

COR: WIL VOR renewed to DVOR (WFF 15JUN2023)

THIS PAGE INTENTIONALLY LEFT BLANK