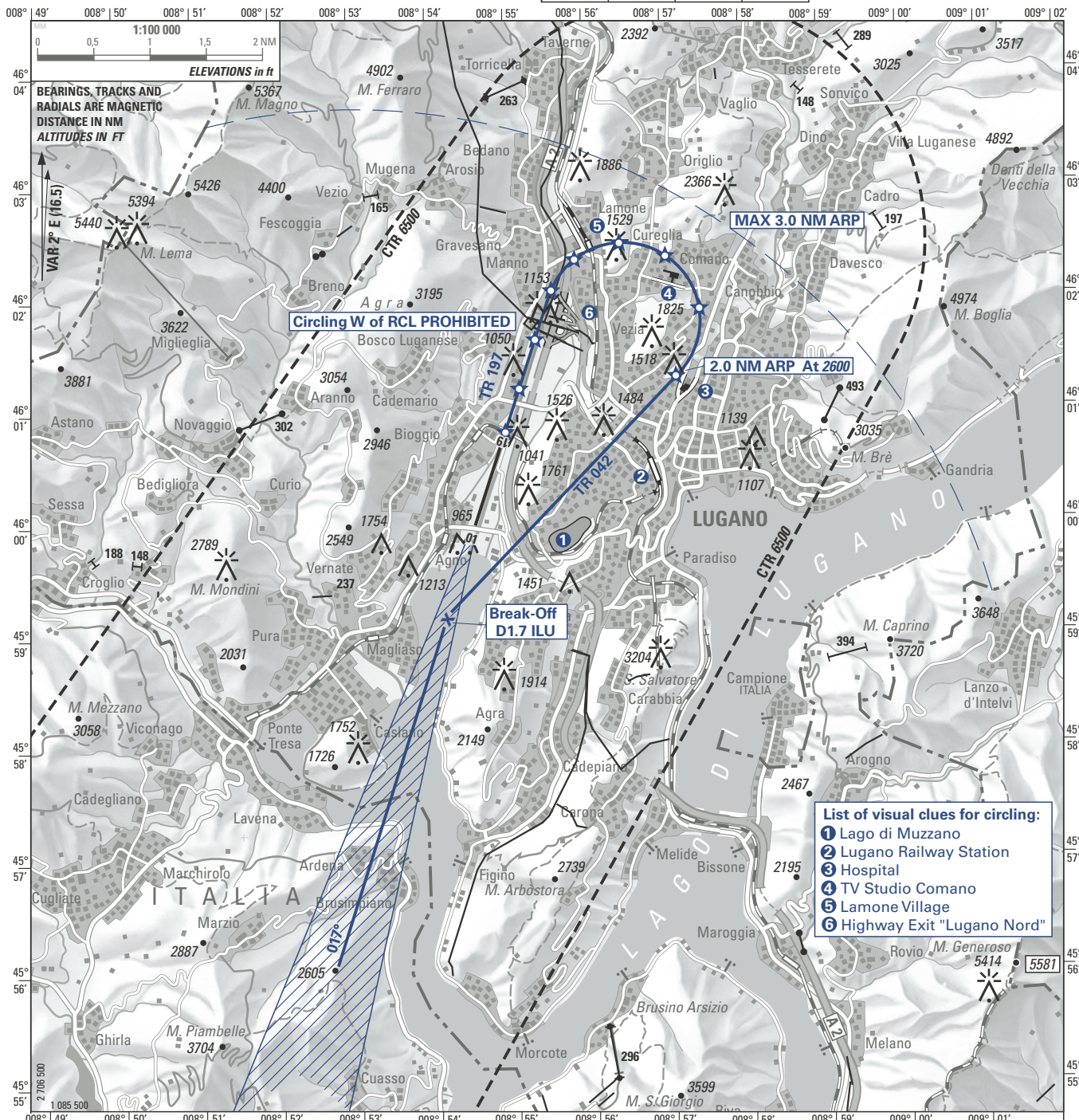


CIRCLING APPROACH CHART

ELEV 915 ft (279 m)

ATIS	121.175		
TWR	120.250	119.700	121.500
CLR DEL	121.780		

LUGANO
CIRCLING CHARLIE
RWY 19



- List of visual clues for circling:
- 1) Lago di Muzzano
 - 2) Lugano Railway Station
 - 3) Hospital
 - 4) TV Studio Comano
 - 5) Lamone Village
 - 6) Highway Exit "Lugano Nord"

WARNING: Disregard PAPI RWY 01 information.

Use PAPI RWY 19 information only within 2 NM from THR

Descent to be arranged to maintain clean configuration as long as possible, safety and ATC requirement considered.

RLLS RWY 19:

- In case of failure of the RLLS 19, each concerned mast will be numbered on the published NOTAM. Numbering starts with (L1) at the end of the downwind leg and runs until (L9) for last pole before THR 19.
- HN: If RLLS RWY 19 u/s, then no clouds below 3000 ft QNH.

OBST ELEV: ft / HGT: ft

COR: OBST, editorial (WEF 13JUL2023)

CIRCLING PROCEDURE

If visual contact is established at D2.2 ILU, continue straight ahead. At D1.7 ILU turn right on track 042° and continue descent visually to 2600 ft.

At 2 NM ARP start left turn onto base.

OCA/H	
CIRCLING	
A & B	1) VIS m
1)	Day 3000
2600 (1685)	Night 5000

1) Only applicable by operators complying with the requirements of § 2.22.1.1.4.2 § 2b), otherwise the following minimum conditions must be observed:
VIS 5000 m and ceiling 3100 ft AAL, day only.

© swisstopo

THIS PAGE INTENTIONALLY LEFT BLANK