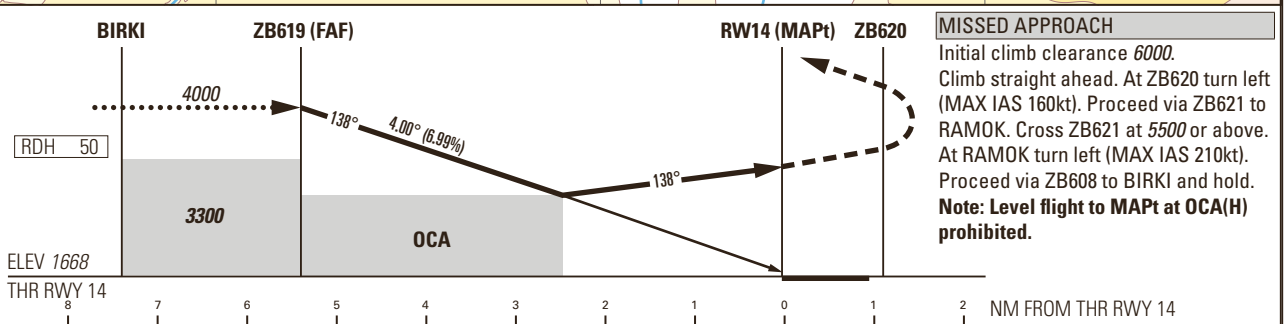
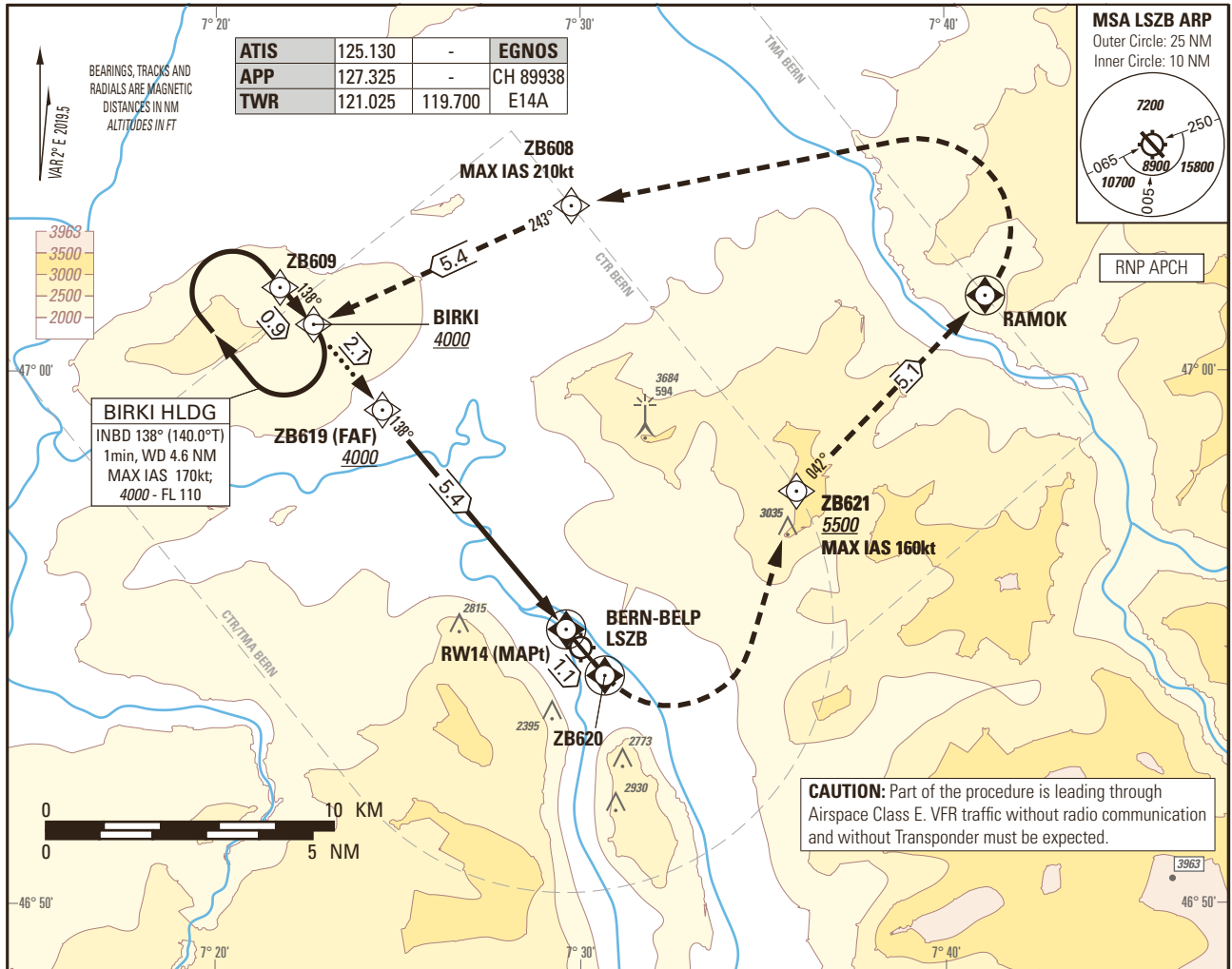


Instrument Approach Chart
(IAC) - ICAO

AD ELEV 1675ft

TRANSITION LEVEL by ATC
TRANSITION ALTITUDE 6000

BERN-BELP LSZB
RNP RWY 14
ACFT CAT A/B/C



Missed APCH climb gradient requirement	STRAIGHT-IN APPROACH		
	OCA(H) LPV CAT I		
	A	B	C
2.5%	2610 (942)	2626 (958)	2639 (971)
5.0% up to 3100	2286 (618)	2303 (635)	2316 (648)
7.0% up to 3100	2113 (445)	2130 (462)	2143 (475)
	MDA(H) LPV		
6.7% up to 3100	2168 (500)		
	OCA(H) LNAV		
2.5%	2840 (1172)		
3.9% up to 3400	2570 (902)		

DIST THR	5.4	5.0	4.0	3.0	2.0	1.0
ALT	4000	3840	3420	3000	2570	-

ROD	GS kt	90	110	130	140
	FT/MIN	637	779	920	991

CAUTION

- Visual Segment Surface (VSS) penetrated by trees 0.8 NM before THR 14 on the left hand side up to 1910ft AMSL.
- This is not a standard APCH angle.
- On 4° APCH angle and GS>140kt resulting ROD>1000ft/min.
- OBST limitation and restriction according to non-instrument RWY criteria.
- **When reaching the OCA(H) and no visual contact to the landing RWY is established and can be maintained, start the missed APCH climb without delay.**

REMARK

- Circling according to specific APCH charts.
- Training RNP APCH: OCA (H) 3000ft (1330ft).

COR: TWR ALTN FREQ added (WEF 10AUG2023)

Input data

Operation Type	0
SBAS Provider	1 (EGNOS)
Airport Identifier	LSZB
Runway	14
Runway Letter	0 (None)
Approach Performance Designator	0
Route Indicator	
Reference Path Data Selector	0
Reference Path Identifier	E14A
LTP/FTP Latitude	465504.5820N
LTP/FTP Longitude	0072932.9760E
LTP/FTP Ellipsoidal Height (metres)	557.3
FPAP Latitude	465422.4635N
Delta FPAP Latitude (seconds)	-42.1185
FPAP Longitude	0073024.3390E
Delta FPAP Longitude (seconds)	51.3630
Threshold Crossing Height	50.0
TCH Units Selector	0 (feet)
Glidepath Angle (degrees)	4.00
Course Width (metres)	105.00
Length Offset (metres)	168
HAL (metres)	40.0
VAL (metres)	35.0

Output data

Data Block	10 02 1A 13 0C 0E 00 00 01 34 31 05 0C 8F 22 14 60 26 37 03 C5 29 F3 B6 FE 46 91 01 F4 01 90 01 64 15 C8 AF B1 6A 8D 9D
Calculated CRC Value	B16A8D9D

Required Additional Data

ICAO Code	LS
LTP/FTP Orthometric Height (metres)	508.28