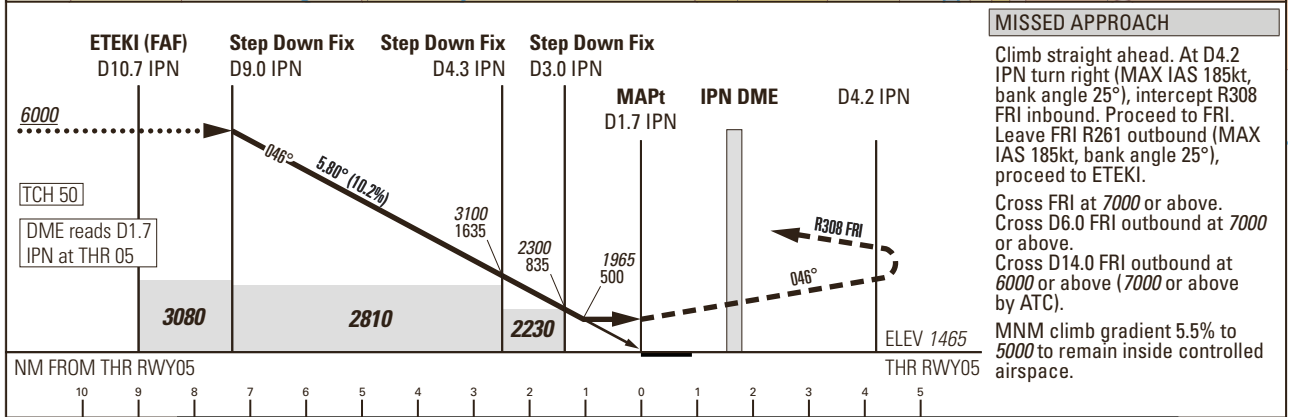
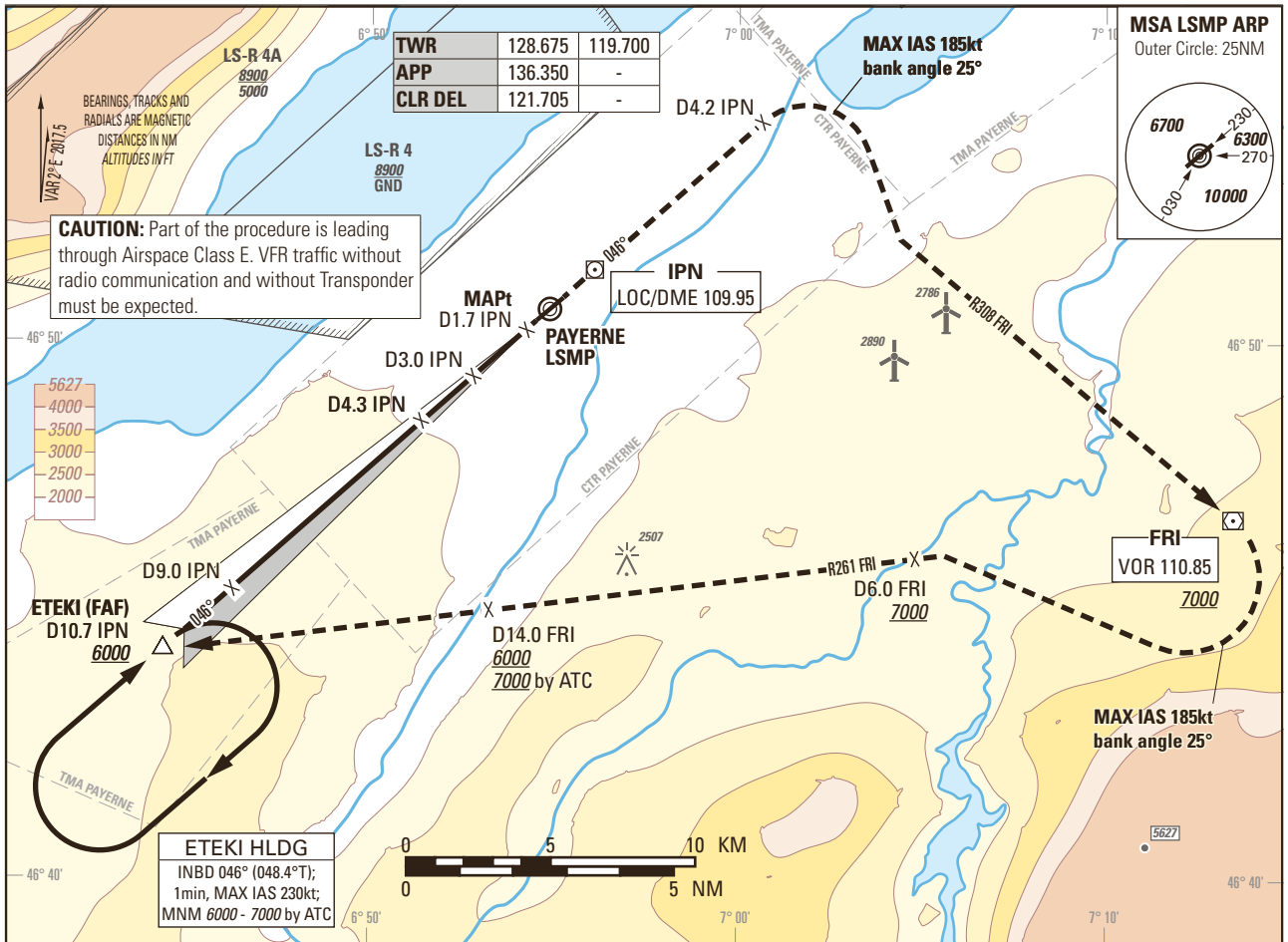


Instrument Approach Chart
(IAC) - ICAO

AD ELEV 1465ft

TRANSITION LEVEL by ATC
TRANSITION ALTITUDE 6000

PAYERNE LSMP
LOC RWY 05 (STEEP APCH 5.80°)
ACFT CAT A/B/C/D



MISSED APPROACH
Climb straight ahead. At D4.2 IPN turn right (MAX IAS 185kt, bank angle 25°), intercept R308 FRI inbound. Proceed to FRI. Leave FRI R261 outbound (MAX IAS 185kt, bank angle 25°), proceed to ETEKI.
Cross FRI at 7000 or above. Cross D6.0 FRI outbound at 7000 or above.
Cross D14.0 FRI outbound at 6000 or above (7000 or above by ATC).
MNM climb gradient 5.5% to 5000 to remain inside controlled airspace.

Missed APCH climb gradient requirement	STRAIGHT-IN APPROACH			
	A	B	C	D
	OBSTACLE CLEARANCE ALTITUDE (HEIGHT)			
2.5%	2650 (1185)			
3.2% to 5200	1940 (475)			
	MINIMUM DESCENT ALTITUDE (HEIGHT)			
3.2% to 5200	1965 (500)			
CIRCLING ¹⁾	A	B	C	D
OCA(H)	2110 (645)	2450 (985)	2790 (1325)	2830 (1365)

ROD	GS kt	90	110	130	150
		FT/MIN	926	1132	1337

NOTE
¹⁾ Circling north of RWY only. Circling must remain inside CTR at all time. Remain SE of Lake Neuchâtel. MAX distance parallel of RWY for all ACFT Cat: 2NM.

CAUTION
- MAX GS 115kt in final approach to avoid ROD > 1000ft/min.
- Non-standard approach angle.

REMARK
- OBST limitation and restriction according to non-instrument RWY criteria.

COR: RMK, TWR ALTN FREQ., editorial (WEF 18MAY2023)

THIS PAGE INTENTIONALLY LEFT BLANK