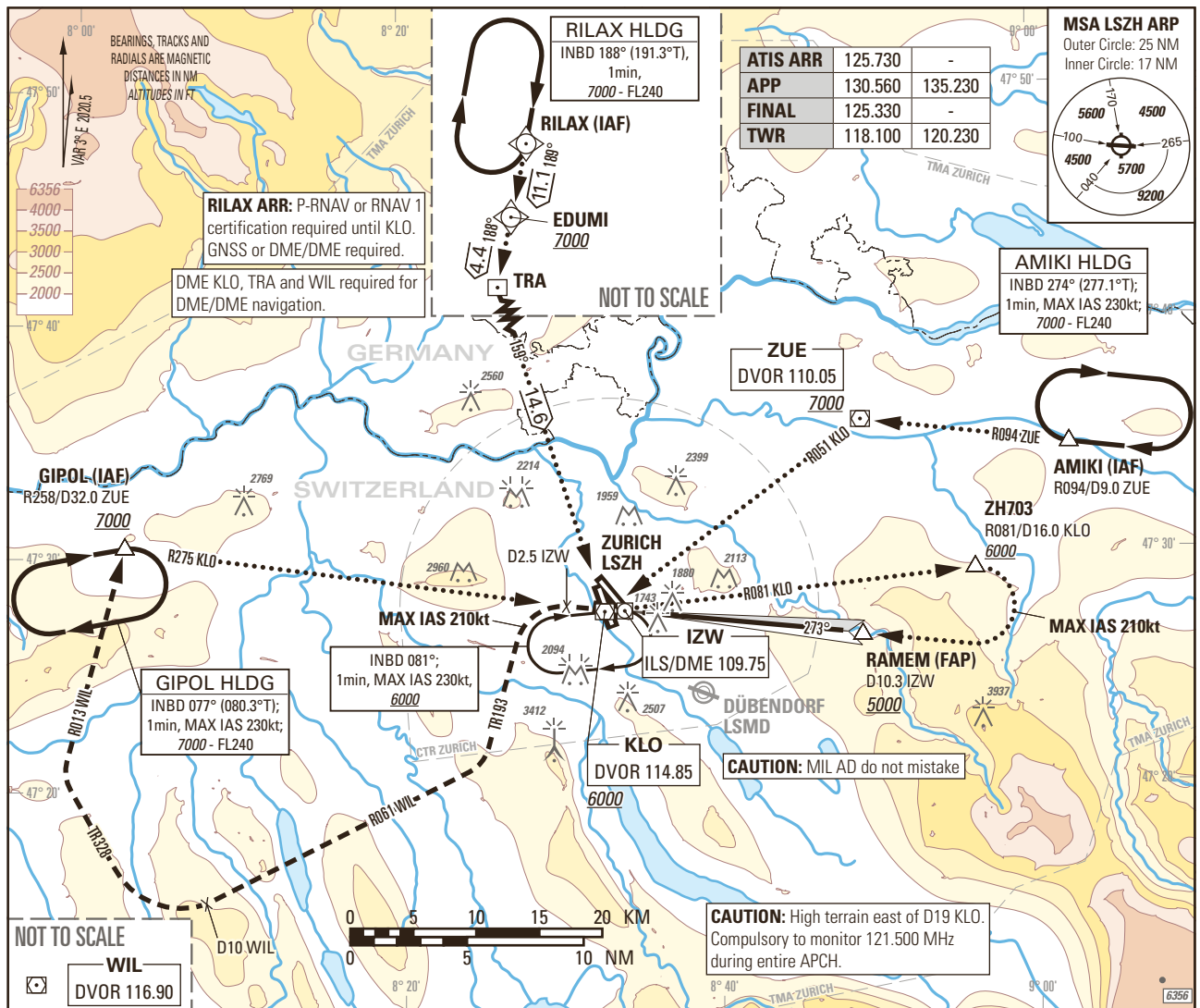


Instrument Approach Chart  
(IAC) - ICAO

AD ELEV 1417ft

TRANSITION LEVEL by ATC  
TRANSITION ALTITUDE 7000

ZURICH LSZH  
ILS RWY 28



**MISSED APPROACH**

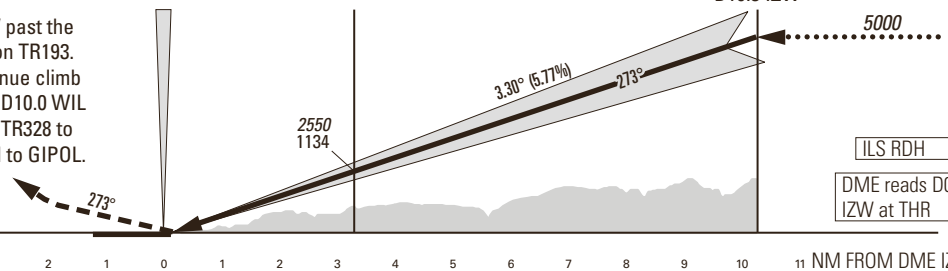
Initial climb clearance 4000.

Climb straight ahead. At D2.5 IZW past the station turn left (MAX IAS 210kt) on TR193. When established on TR193 continue climb to 7000. Intercept R061 to WIL. At D10.0 WIL to the station turn right. Establish TR328 to intercept R013 from WIL. Proceed to GIPOL. MNM climb gradient 4.5% up to 6000 due to ASP restrictions.

ELEV 1416  
THR RWY28

IZW DME D3.3 IZW

RAMEM (FAP)  
D10.3 IZW



Missed APCH climb gradient requirement	STRAIGHT-IN APPROACH				
	A	B	C	D	D <sub>L</sub>
OBSTACLE CLEARANCE ALTITUDE (HEIGHT)					
2.5%	pressure altimeter	2270 (854)	2280 (864)	2293 (877)	2303 (887)
4.0% to 2700	pressure altimeter	2069 (653)	2079 (663)	2092 (676)	2102 (686)
DECISION ALTITUDE (HEIGHT)					
2.5%	pressure altimeter	2270 (854)	2280 (864)	2293 (877)	2303 (887)
4.0% to 2700	pressure altimeter	2091 (675)	2091 (675)	2092 (676)	2102 (686)

**CAUTION**

- Do not confuse RWY 32 with RWY 28.
- Bright floodlight slightly N of APCH at D0.7 IZW.
- Expect turbulences on short final during south-westerly winds.
- Nuisance GPWS glideslope warning may be expected below 100ft THR.
- 0.4NM BFR THR28 visual segment surface (VSS) penetrated by trees up to 1496ft AMSL.

**REMARK**

- Uncategorised ILS APCH RWY 28 due to obstacle limitation and restriction according to non-instrument RWY criteria.
- ILS 28 signal fulfils ICAO Annex 10, CAT I specifications.

ROD	GS kt	90	110	130	150
	FT/MIN		526	642	759

COR: WIL VOR renewed to DVOR (WEF 15JUN2023)

THIS PAGE INTENTIONALLY LEFT BLANK