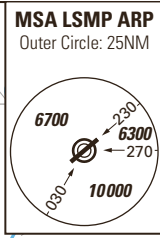
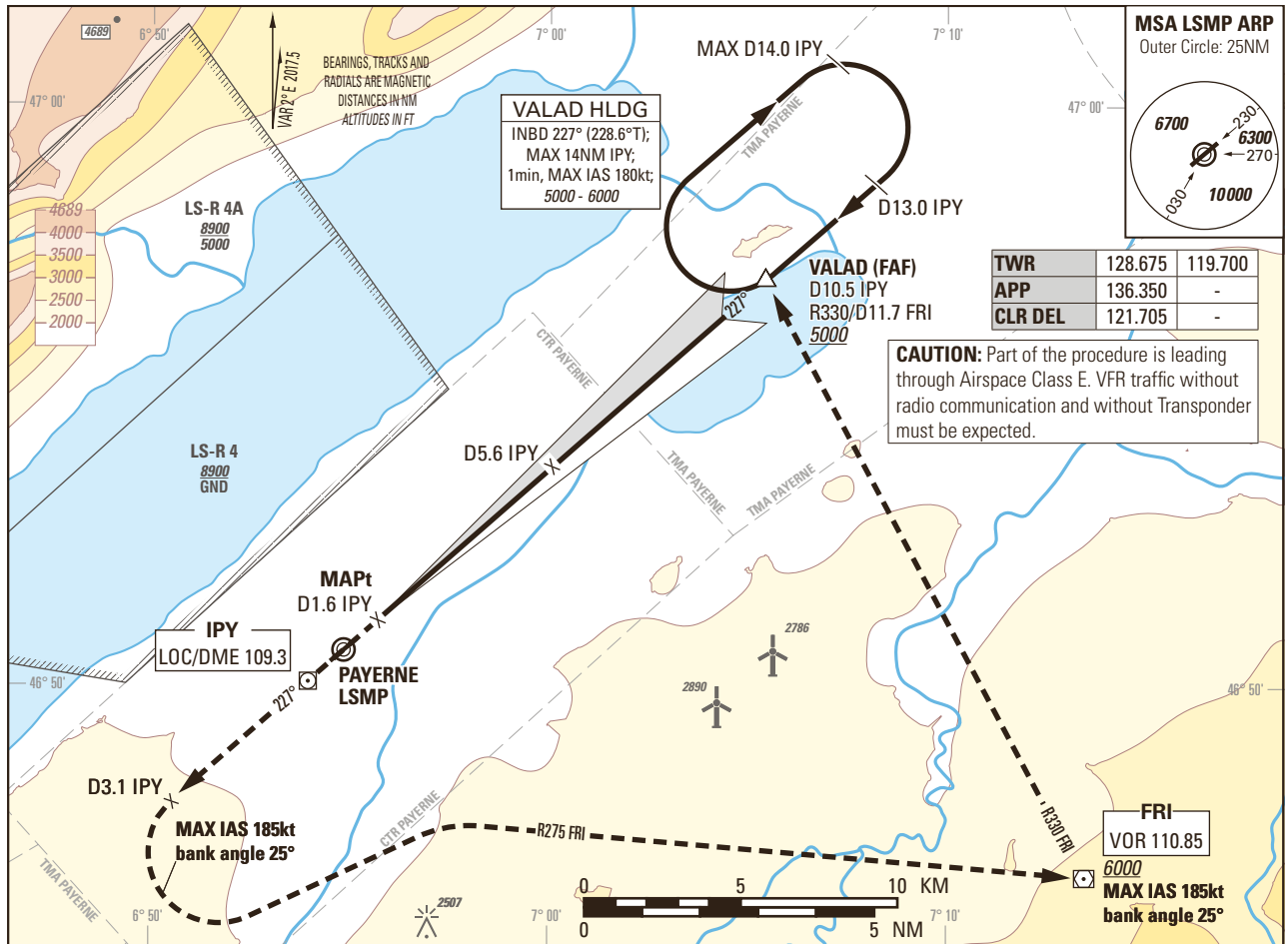


Instrument Approach Chart
(IAC) - ICAO

AD ELEV 1465ft

TRANSITION LEVEL by ATC
TRANSITION ALTITUDE 6000

PAYERNE LSMP
LOC 3.7° RWY 23
ACFT CAT A/B/C/D

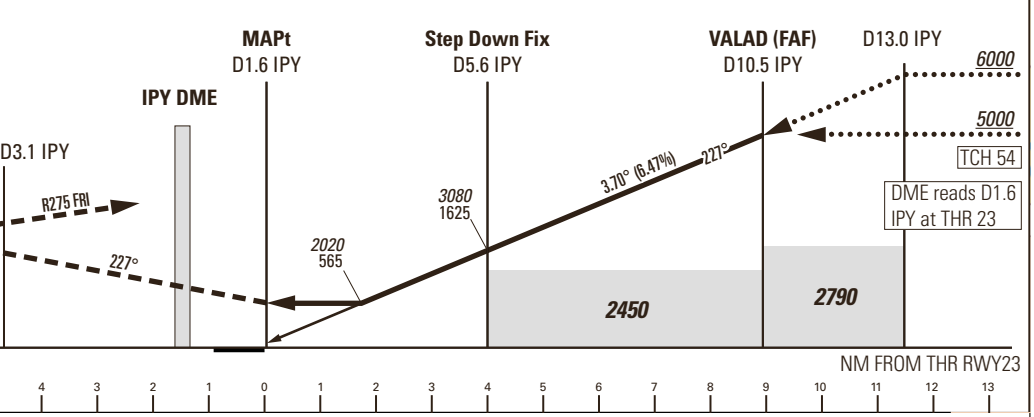


TWR	128.675	119.700
APP	136.350	-
CLR DEL	121.705	-

CAUTION: Part of the procedure is leading through Airspace Class E. VFR traffic without radio communication and without Transponder must be expected.

MISSED APPROACH

Climb straight ahead. At D3.1 IPY turn left (MAX IAS 185kt, bank angle 25°), intercept R275 FRI inbound. Leave FRI R330 outbound (MAX IAS 185kt, bank angle 25°), proceed to VALAD. Climb to 6000. MNM climb gradient 5.1% to 5000 to remain in controlled airspace.



Missed APCH climb gradient requirement	STRAIGHT-IN APPROACH			
	A	B	C	D
	OBSTACLE CLEARANCE ALTITUDE (HEIGHT)			
2.5%	2200 (745)			
3.4% to 2600	2020 (565)			
	MINIMUM DESCENT ALTITUDE (HEIGHT)			
3.4% to 2600	2020 (565)			
CIRCLING ¹⁾	A	B	C	D
OCA(H)	2110 (645)	2450 (985)	2790 (1325)	2830 (1365)

IPY DME	3	4	5	6	8	10	10.5	13
recommended CROSSING ALT	2060	2450	2850	3240	4020	4810	5000	6000
ROD	GS kt	90	110	130	150			
	FT/MIN	589	720	851	982			

NOTE
¹⁾ Circling north of RWY only. Circling must remain inside CTR at all time. Remain SE of Lake Neuchatel. MAX distance parallel of RWY for all ACFT Cat: 2NM.

CAUTION
- MAX GS 150kt in final approach to avoid ROD > 1000ft/min.
- Non-standard approach angle.

REMARK
- OBST limitation and restriction according to non-instrument RWY criteria.

COR: RMK, TWR ALTN FREQ (WEF 18MAY2023)

THIS PAGE INTENTIONALLY LEFT BLANK