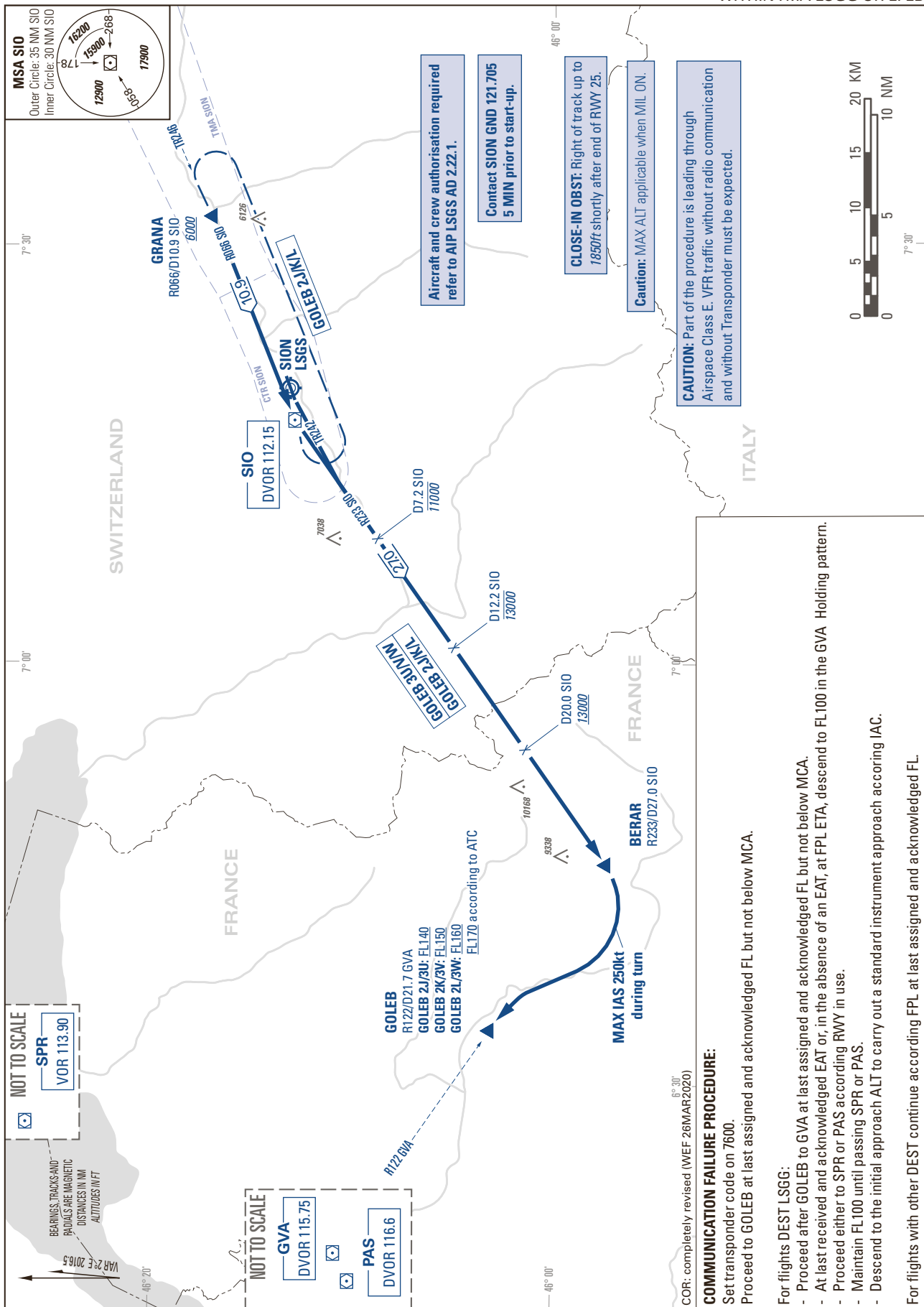


STANDARD INSTRUMENT DEPARTURE CHART (SID) - ICAO

TRANSITION LEVEL by ATC
TRANSITION ALTITUDE 13000

SION LSGS
SID RWY 07/25 ONLY FOR DEST
WITHINTMA LSGG OR FLFB



THIS PAGE INTENTIONALLY LEFT BLANK