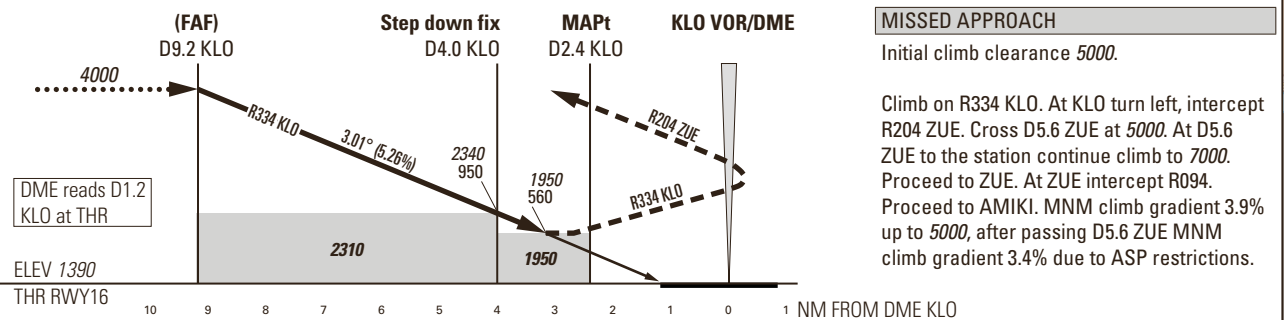
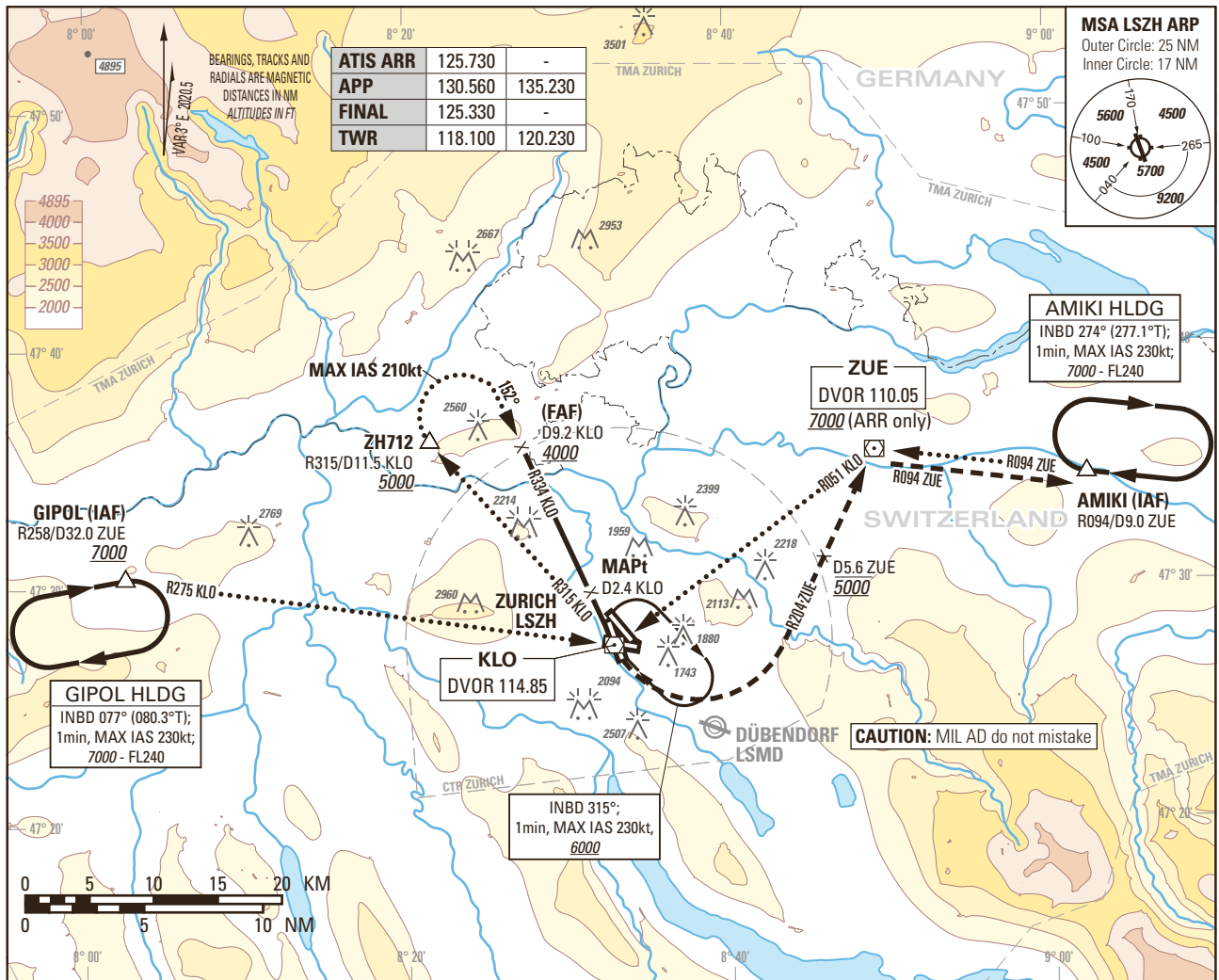


Instrument Approach Chart
(IAC) - ICAO

AD ELEV 1417ft

TRANSITION LEVEL by ATC
TRANSITION ALTITUDE 7000

ZURICH LSZH
VOR RWY 16



DIST DME KLO	9	8	7	6	5	4	3
recommended CROSSING ALT	3940	3620	3300	2980	2660	2340	2020
recommended CROSSING HGT	2550	2230	1910	1590	1270	950	630

MISSED APPROACH
Initial climb clearance 5000.

Climb on R334 KLO. At KLO turn left, intercept R204 ZUE. Cross D5.6 ZUE at 5000. At D5.6 ZUE to the station continue climb to 7000. Proceed to ZUE. At ZUE intercept R094. Proceed to AMIKI. MNM climb gradient 3.9% up to 5000, after passing D5.6 ZUE MNM climb gradient 3.4% due to ASP restrictions.

OBSTACLE CLERANCE ALTITUDE (HEIGHT)	A	B	C	D
STRAIGHT-IN APPROACH	1950 (560)			

ROD	GS kt	90	110	130	150
	FT/MIN	479	586	692	799

CAUTION
0.8 NM BFR THR16 Visual Segment Surface (VSS) penetrated by trees up to 1580ft AMSL.

COR: Completely revised (WEF 02DEC2021)

THIS PAGE INTENTIONALLY LEFT BLANK