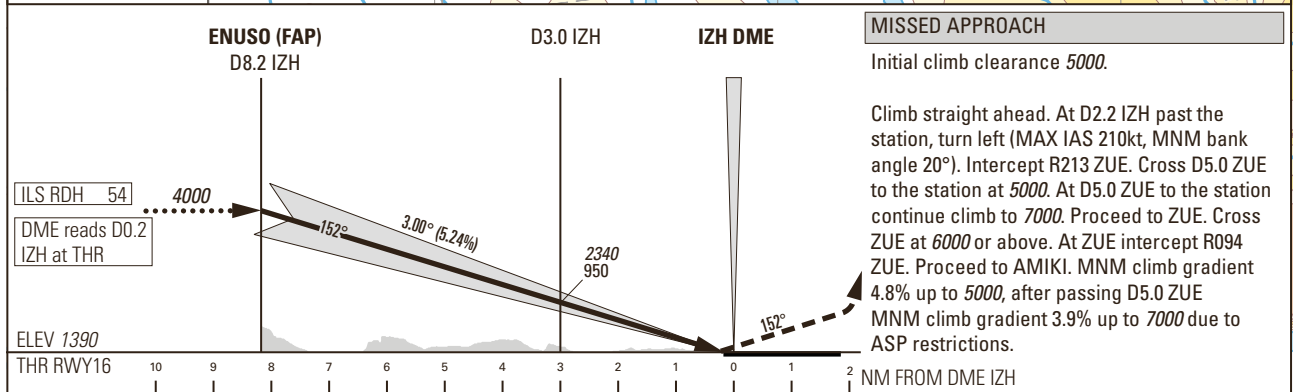
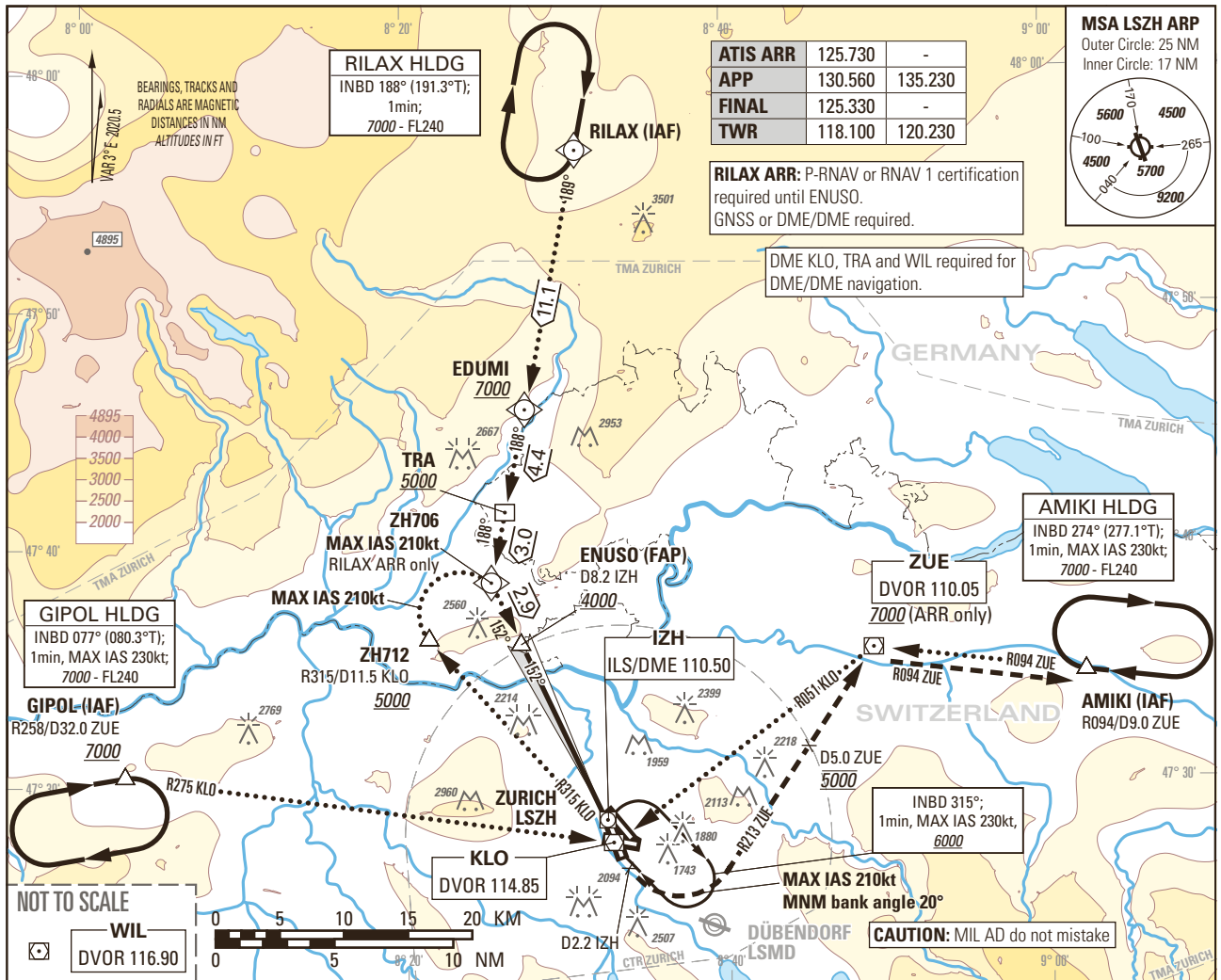


Instrument Approach Chart  
(IAC) - ICAO

AD ELEV 1417ft

TRANSITION LEVEL by ATC  
TRANSITION ALTITUDE 7000

ZURICH LSZH  
ILS RWY 16  
CAT II & III



OBSTACLE CLERANCE ALTITUDE (HEIGHT)		M/A climb gradient	A	B	C	D	D <sub>L</sub>	
CAT	altimeter							
CAT I	pressure altimeter	2.5%	1803 (413)	1813 (423)	1823 (433)	1832 (442)		
	pressure altimeter							
CAT II	radio altimeter	4.0% to 2300	1446 (56)	1457 (67)	1470 (80)	1488 (98)	1487 (97)	
	radio altimeter and autopilot							
DECISION ALTITUDE (HEIGHT) <sup>1)</sup>								
CAT I	pressure altimeter	2.5%	1803 (413)	1813 (423)	1823 (433)	1832 (442)		
CAT I	pressure altimeter	4.0% to 2300	1590 (200)					
CAT II	radio altimeter and autopilot		1490 (100)					

ROD	GS kt	90	110	130	150
	FT/MIN	478	584	690	796
<b>NOTE</b>					
<sup>1)</sup> Radio altimeter reading at CAT I DH 187ft, at CAT II DH 93ft, for lower minima PPR FOCA.					
- Due to GP signal disturbance RWY16, PIC might be REQ by ATC to change APCH Type to LOC or VIS APCH, MET permitting.					
COR: WIL VOR renewed to DVOR (WEF 15JUN2023)					

THIS PAGE INTENTIONALLY LEFT BLANK