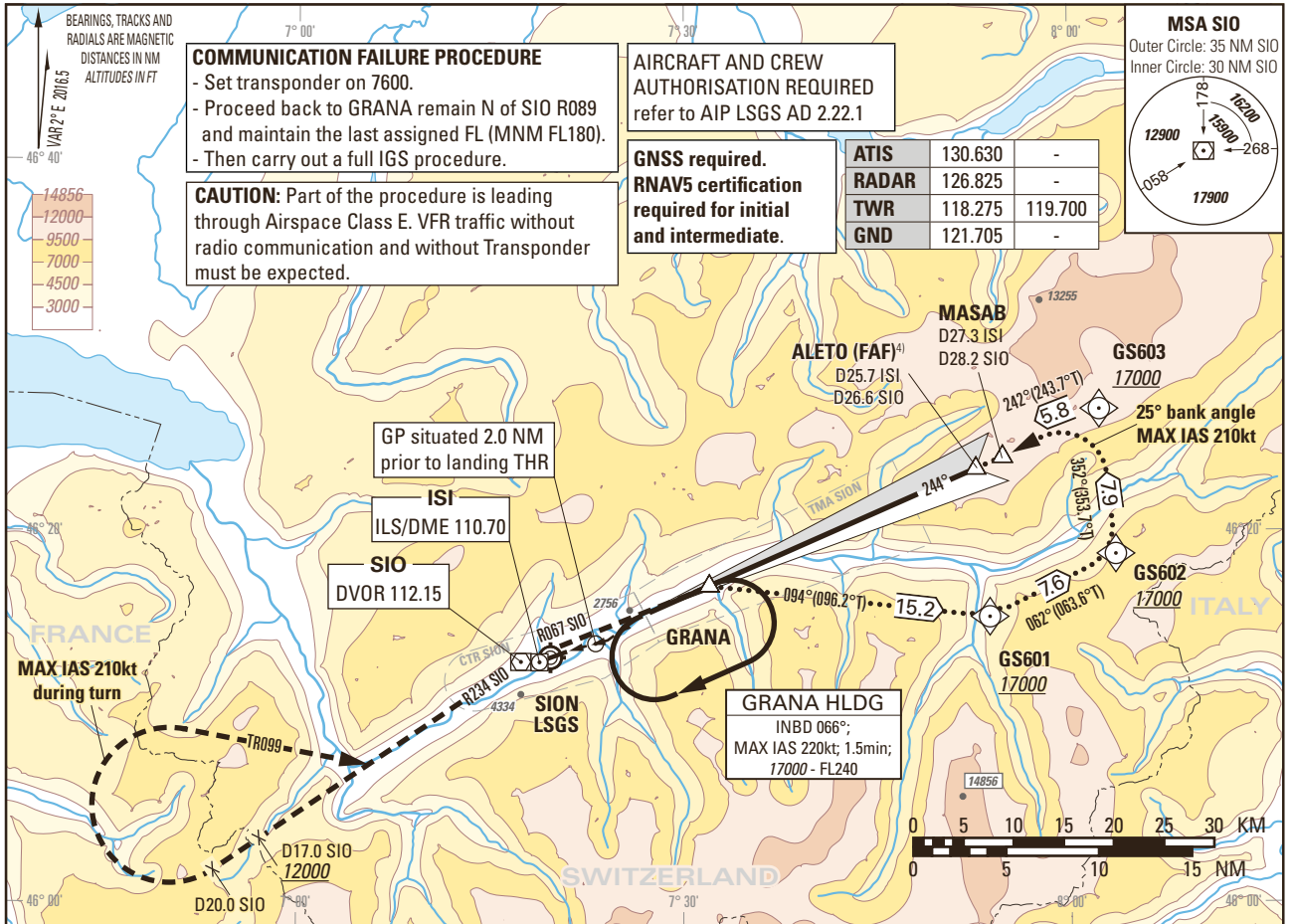


Instrument Approach Chart
(IAC) - ICAO
(IGS instruction: see LSGS AD 2.22)

AD ELEV 1582ft

TRANSITION LEVEL by ATC
TRANSITION ALTITUDE 17000

SION LSGS
IGS RWY 25 (ACFT CAT A/B/C)
OFFSET 6.5° RIGHT
GLIDE PATH 6.0°, VISUAL PART 4.0°



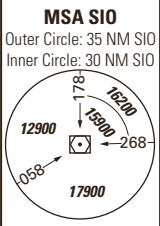
COMMUNICATION FAILURE PROCEDURE
- Set transponder on 7600.
- Proceed back to GRANA remain N of SIO R089 and maintain the last assigned FL (MNM FL180).
- Then carry out a full IGS procedure.

CAUTION: Part of the procedure is leading through Airspace Class E. VFR traffic without radio communication and without Transponder must be expected.

AIRCRAFT AND CREW AUTHORISATION REQUIRED
refer to AIP LSGS AD 2.22.1

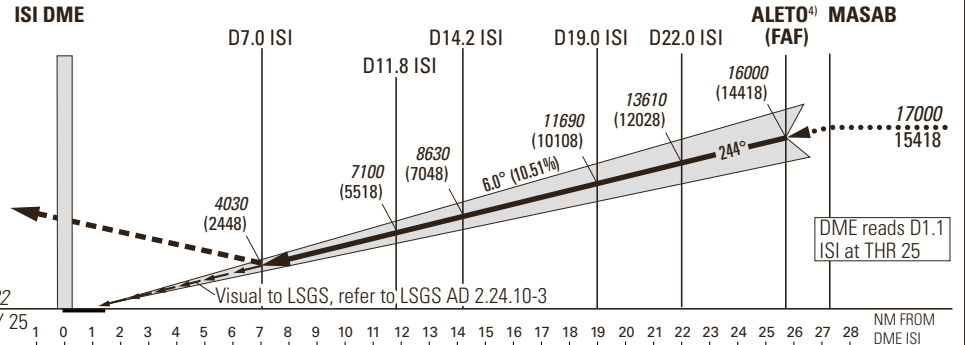
GNSS required.
RNAV5 certification required for initial and intermediate.

ATIS	130.630	-
RADAR	126.825	-
TWR	118.275	119.700
GND	121.705	-



MISSED APPROACH
Climb to 17000.

Climb on R067 to SIO, leave SIO on R234 outbound, at D20.0 SIO turn right (MAX IAS 210kt during turn), and establish TR099 to intercept R234 SIO inbound SIO. Proceed via SIO to GRANA. Cross D17.0 SIO at 12000 or above, GRANA at 17000.



Missed APCH climb gradient requirement	STRAIGHT-IN APPROACH				VIS m
	A	B	C	DECISION ALTITUDE (HEIGHT)	
	2.5%	6520 (4940) ¹⁾			
3.0%	6080 (4500) ¹⁾				
3.5%	5650 (4070) ¹⁾				
4.0%	5220 (3640) ¹⁾				
4.5%	4780 (3200) ¹⁾				
4.9%	4490 (2910) ¹⁾				
Circling north of AD only ^{1) 2) 3)}	3400 (1820)	5040 (3460)	6060 (4480)	5000	
ROD	GS kt	90	110	130	150
	FT/MIN	958	1171	1384	1597

	7	8	9	10	12	14	16
DIST ISI	7	8	9	10	12	14	16
DIST THR	5.9	6.9	7.9	8.9	10.9	12.9	14.9
ALT FT	4030	4670	5310	5950	7220	8500	9780
DIST ISI	18	20	22	24	25	25.7	27.3
DIST THR	16.9	18.9	20.9	22.9	23.9	24.6	26.2
ALT FT	11050	12330	13610	14890	15530	16000	17000
REMARK							
- APCH PROHIBITED IF GP U/S.							
- Table for temperature deviation from ISA. See LSGS AD 2.23.2.							
- Final APCH offset 6.5° from RCL.							
- If unable to comply with MAX HLDG speed, inform ATC.							
CAUTION							
- This is not a standard APCH angle.							
- 3.8 NM BFR THR 25 Visual Segment Surface (VSS) penetrated by OBST up to 4370ft AMSL.							
NOTE							
¹⁾ Special training required. ²⁾ Night circling prohibited. ⁴⁾ At ALETO, GP 15970.							
³⁾ ACFT categories A, B with speed limit of 125kt and C with speed limit of 135kt.							

COR: TWR ALTN FREQ added (WEF 23MAR2023)

THIS PAGE INTENTIONALLY LEFT BLANK