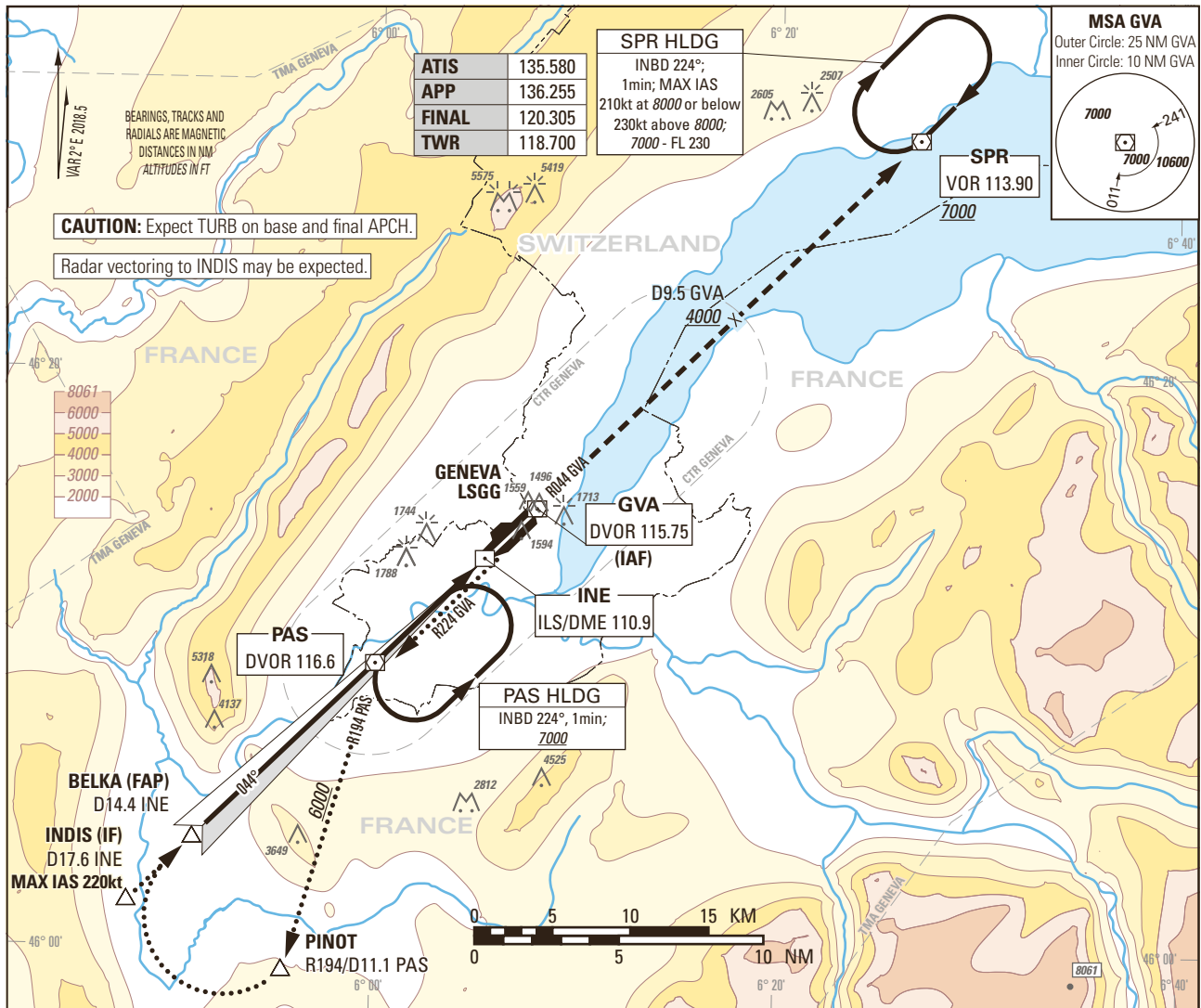


Instrument Approach Chart
(IAC) - ICAO

AD ELEV 1411ft

TRANSITION LEVEL by ATC
TRANSITION ALTITUDE 7000

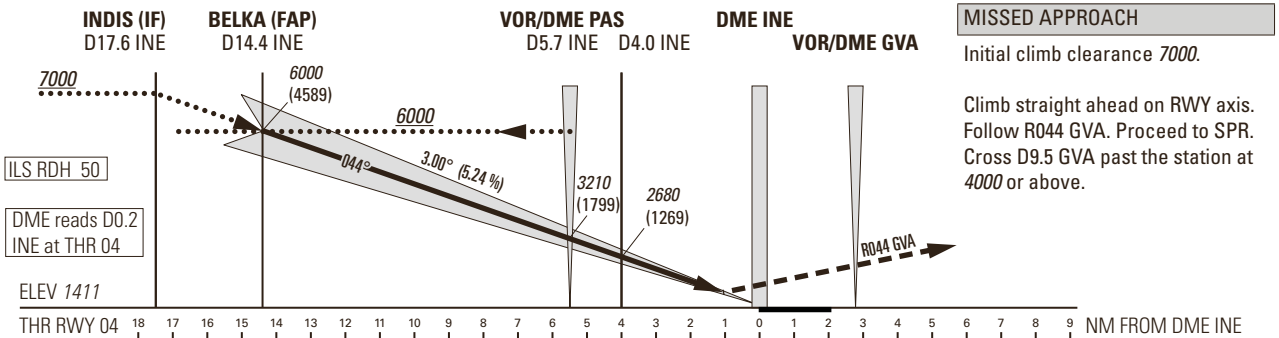
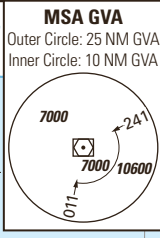
GENEVA LSGG
ILS RWY 04



CAUTION: Expect TURB on base and final APCH.
Radar vectoring to INDIS may be expected.

ATIS	135.580
APP	136.255
FINAL	120.305
TWR	118.700

SPR HLDG
INBD 224°;
1min; MAX IAS
210kt at 8000 or below
230kt above 8000;
7000 - FL 230



MISSED APPROACH
Initial climb clearance 7000.

Climb straight ahead on RWY axis.
Follow R044 GVA. Proceed to SPR.
Cross D9.5 GVA past the station at 4000 or above.

OBSTACLE CLEARANCE ALTITUDE (HEIGHT)		A	B	C	D
CAT I	pressure altimeter	1601 (190)	1609 (198)	1617 (206)	1627 (216)
	Straight-in approach				
DECISION ALTITUDE (HEIGHT)		A	B	C	D
CAT I	pressure altimeter	1611 (200)		1617 (206)	1627 (216)
	Circling ¹⁾²⁾	2100 (689)		2400 (989)	

DIST DME INE	16	14	12	10	8	6	4	2
recommended CROSSING ALT	6510	5870	5230	4590	3960	3320	2680	2050

ROD	GS kt	90	110	130	150
	FT/MIN	478	584	690	796

NOTE

- ¹⁾ Circling on request of ATC under special conditions and north of RWY only, speed and radius for category D as for category C aircraft.
- ²⁾ Circling must remain inside CTR at all times.

COR: MSA (WEF 28MAR2019)

THIS PAGE INTENTIONALLY LEFT BLANK