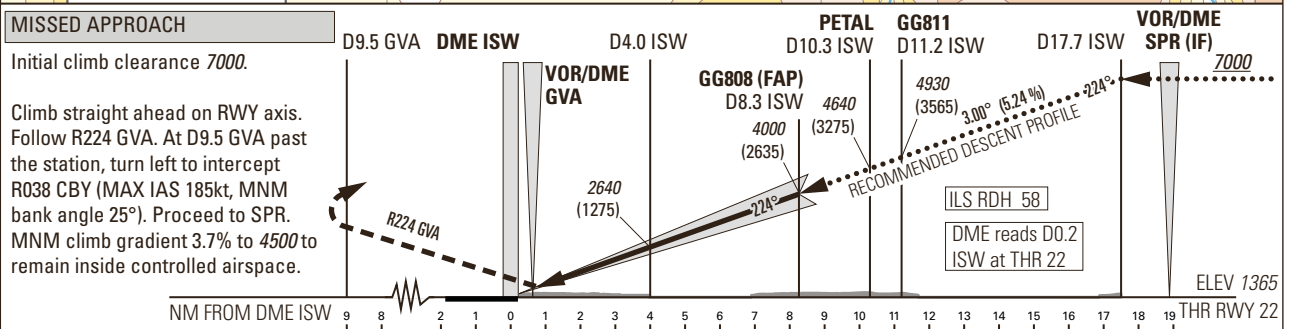
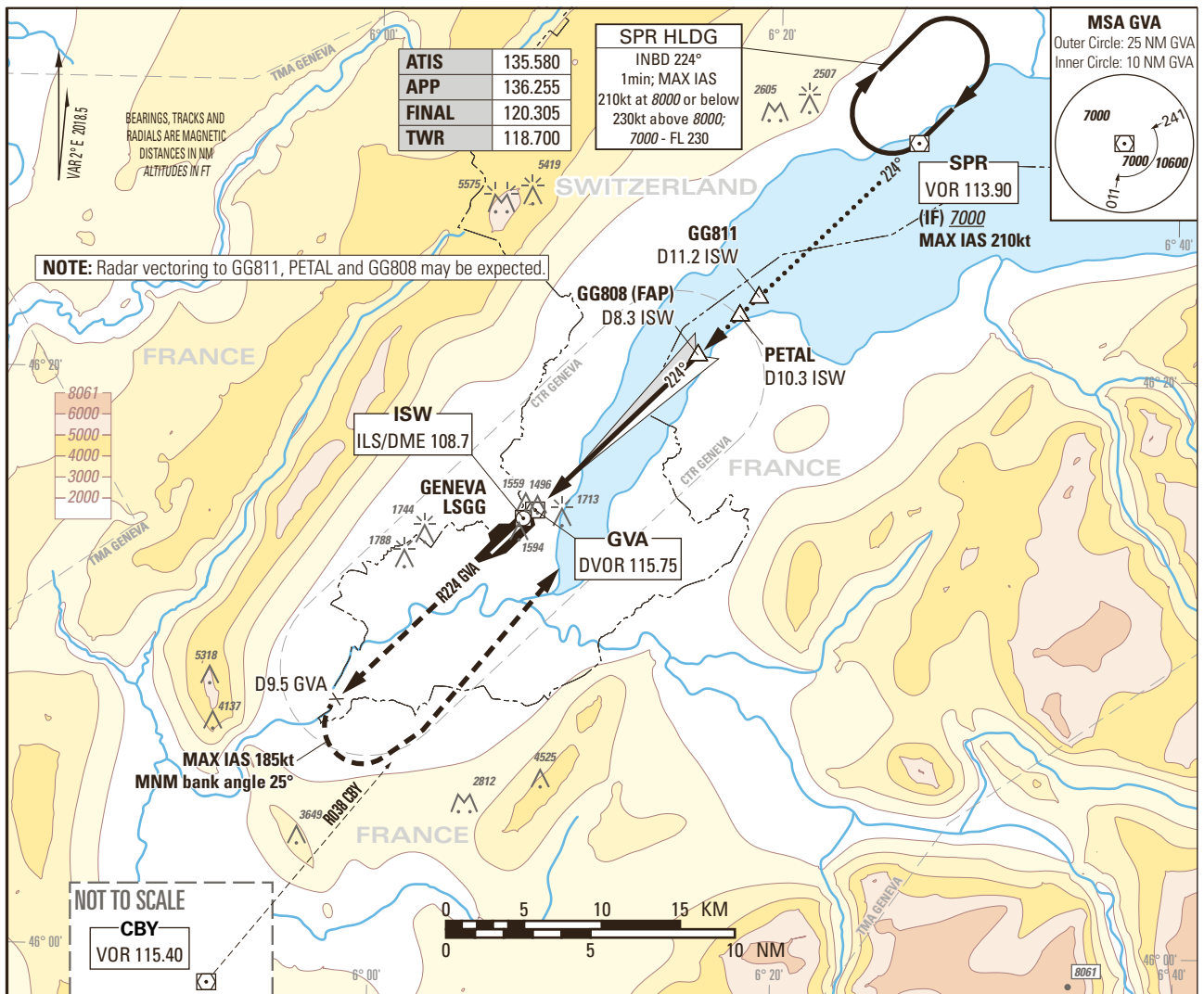


Instrument Approach Chart
(IAC) - ICAO

AD ELEV 1411ft

TRANSITION LEVEL by ATC
TRANSITION ALTITUDE 7000

GENEVA LSGG
ILS RWY 22
CAT II & CAT III



OBSTACLE CLEARANCE ALTITUDE (HEIGHT) ¹⁾					
Missed APCH climb gradient requirement					
	A	B	C	D	
CAT I pressure altimeter	2.5%	2018 (653)	2026 (661)	2035 (670)	2048 (683)
CAT I pressure altimeter	3.4% to 4500	1530 (165)	1538 (173)	1548 (183)	1560 (195)
radio altimeter		1432 (67)	1438 (73)	1449 (84)	1465 (100)
CAT II radio altimeter and autopilot		1427 (62)	1436 (71)	1447 (82)	1464 (99)
DECISION ALTITUDE (HEIGHT) ¹⁾					
	A	B	C	D	
CAT I pressure ²⁾ altimeter	3.4% to 4500	1565 (200)			
CAT II radio altimeter and autopilot ²⁾		1465 (100)			
Circling ^{3) 4)}		2100 (689)	2400 (989)		

DIST DME ISW	2	4	6	8	8.3	10	12	14	16
recommended CROSSING ALT	2000	2640	3280	3910	4000	4550	5190	5820	6460
ROD	GS kt		90	110	130	150			
	FT/MIN		478	584	690	796			

NOTE

¹⁾ Above THR elevation 1365ft.
²⁾ Radio altimeter reading at CAT I DH 216ft, at CAT II DH 108ft, for lower operating minima (DH and RVR) PPR FOCA.
³⁾ Above aerodrome ELEV 1411ft, circling on request of ATC under special conditions and north of RWY only, speed and radius for category D as for category C aircraft.
⁴⁾ Circling must remain inside CTR at all times.

COR: FREQ ISW, OCA(H) (WEF 13AUG2020)

THIS PAGE INTENTIONALLY LEFT BLANK