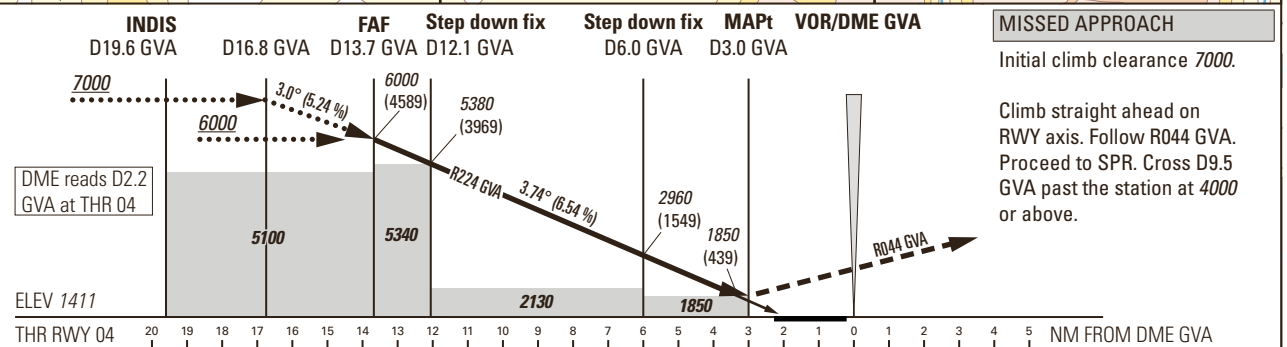
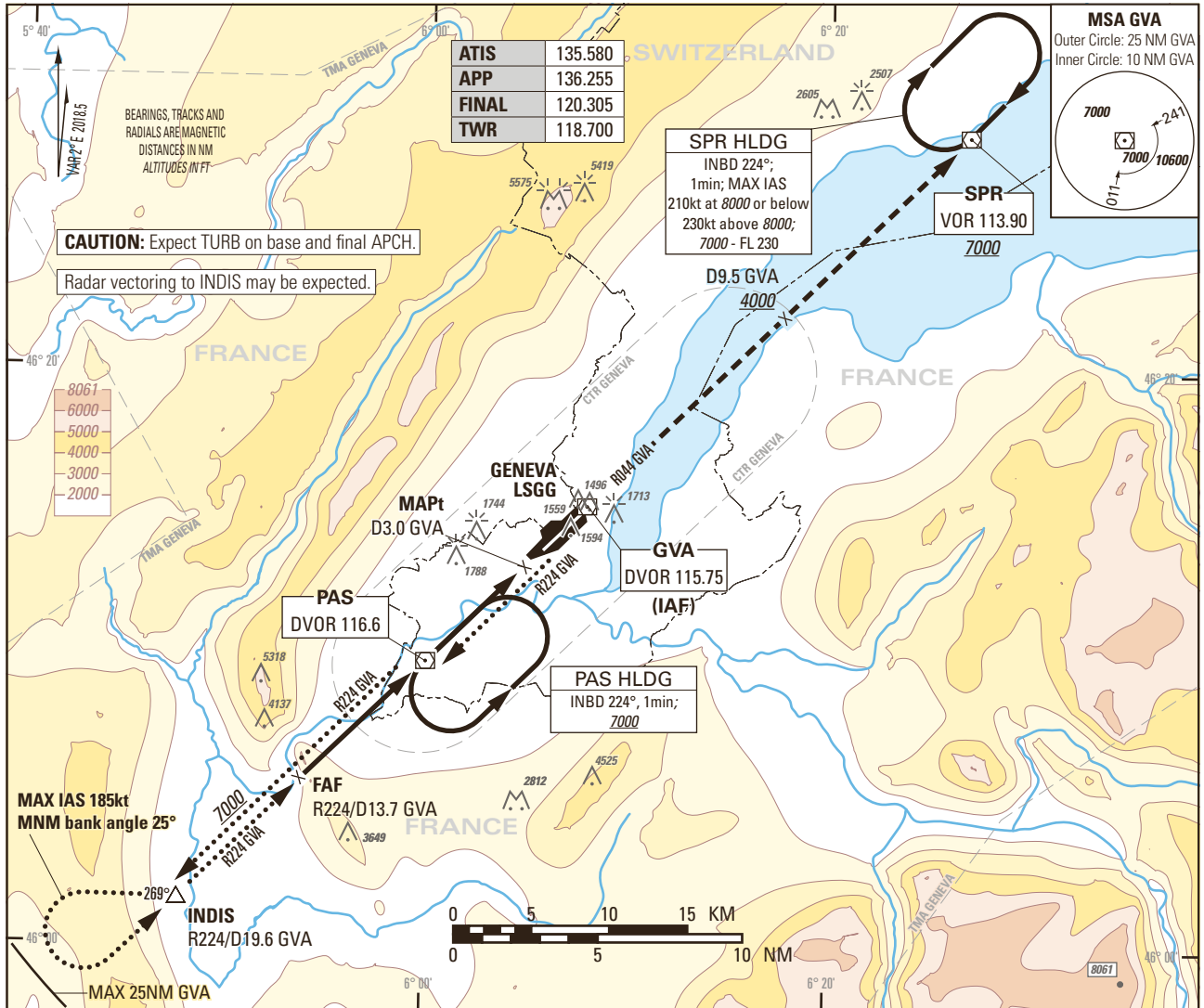


Instrument Approach Chart
(IAC) - ICAO

AD ELEV 1411ft

TRANSITION LEVEL by ATC
TRANSITION ALTITUDE 7000

GENEVA LSGG
VOR RWY 04



DIST DME GVA	13.7	13	12	11	10	9	8	7	6	5	4
recommended crossing ALTITUDE (HEIGHT)	6000 (4589)	5740 (4329)	5340 (3929)	4940 (3529)	4550 (3139)	4150 (2739)	3750 (2339)	3350 (1939)	2960 (1549)	2560 (1149)	2160 (749)

ROD	GS kt	90	110	130	150
	FT/MIN	596	729	861	993

OBSTACLE CLEARANCE ALTITUDE (HEIGHT)	A	B	C	D
Straight-in approach ¹⁾	1850 (439)			
Circling ²⁾³⁾	2100 (690)		2400 (990)	

NOTE
¹⁾ Above THR elevation 1411ft, MAPt at 3.0NM DME GVA (0.8NM THR04).
²⁾ Above aerodrome ELEV 1411ft, circling on request of ATC under special conditions and north of RWY only, speed and radius for category D as for category C aircraft.
³⁾ Circling must remain inside CTR at all times.

CAUTION
 - 0.5 NM BFR THR 04 Visual Segment Surface (VSS) penetrated by trees up to 1550ft AMSL.

COR: MSA (WEF 28MAR2019)

THIS PAGE INTENTIONALLY LEFT BLANK