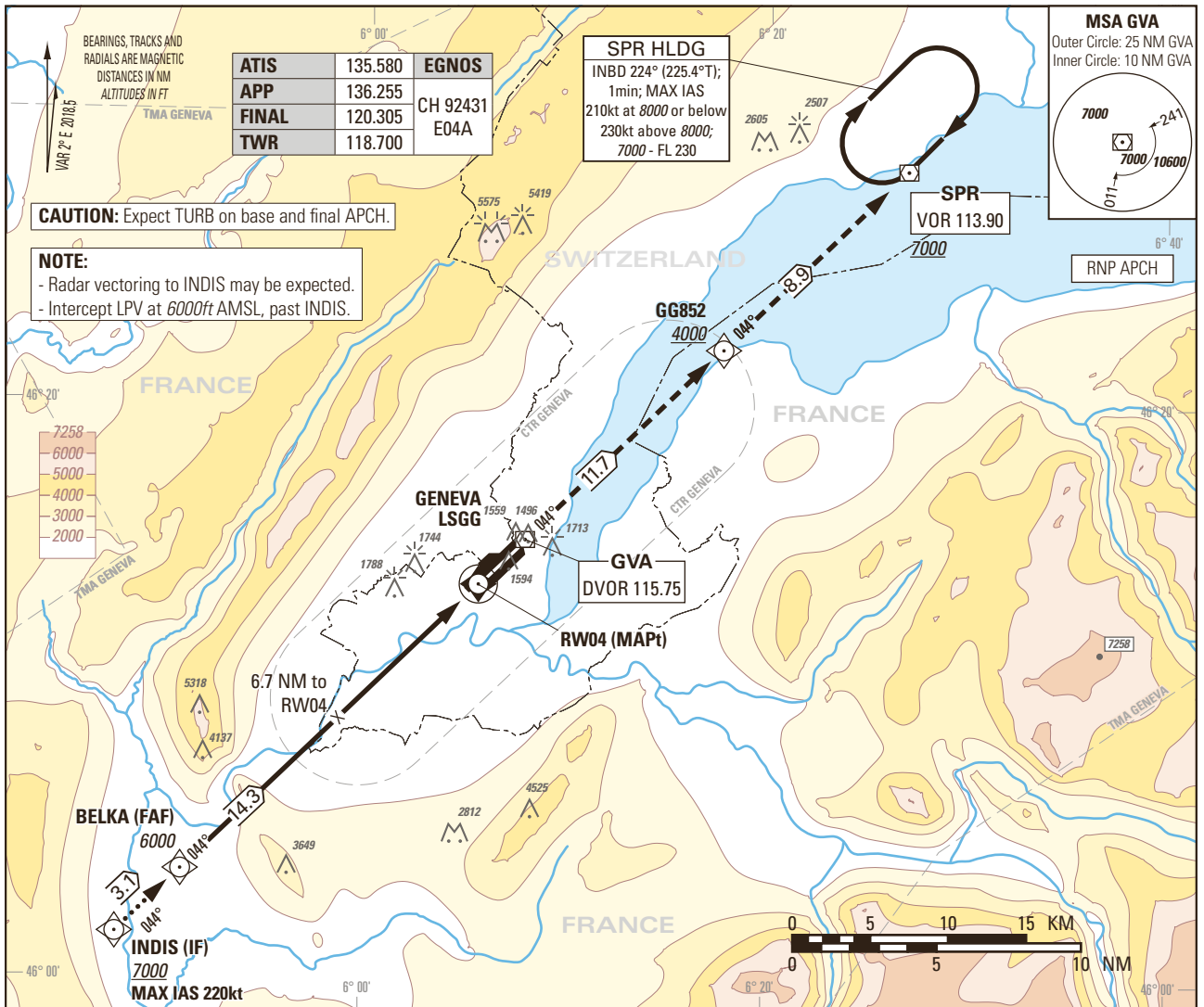


Instrument Approach Chart  
(IAC) - ICAO

AD ELEV 1411ft

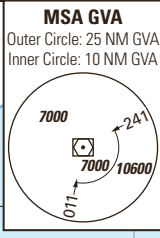
TRANSITION LEVEL by ATC  
TRANSITION ALTITUDE 7000

GENEVA LSGG  
RNP RWY 04



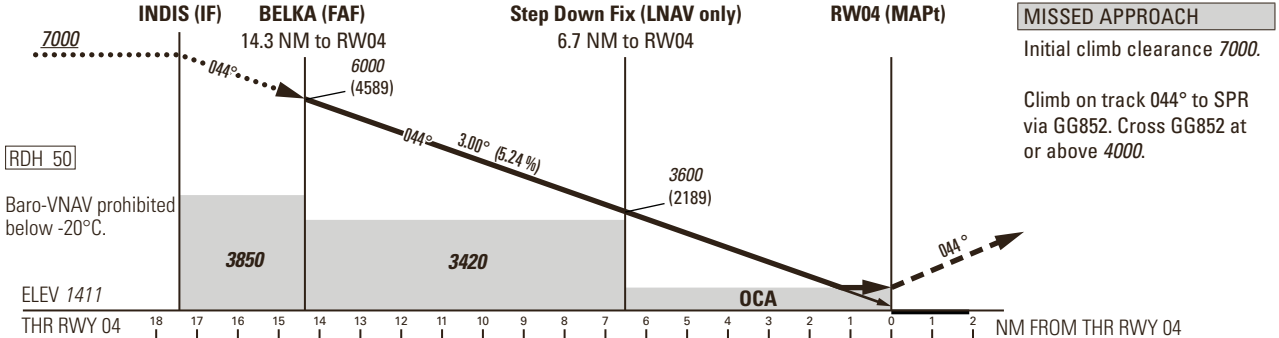
<b>ATIS</b>	135.580	<b>EGNOS</b>	
<b>APP</b>	136.255	<b>CH 92431</b>	
<b>FINAL</b>	120.305	<b>E04A</b>	
<b>TWR</b>	118.700		

**SPR HLDG**  
INBD 224° (225.4°T);  
1min; MAX IAS  
210kt at 8000 or below  
230kt above 8000;  
7000 - FL 230



**CAUTION:** Expect TURB on base and final APCH.

**NOTE:**  
- Radar vectoring to INDIS may be expected.  
- Intercept LPV at 6000ft AMSL, past INDIS.



Missed APCH climb gradient requirement	STRAIGHT-IN APPROACH			
	A	B	C	D
2.5%	OCA(H) LPV CAT I			
	1601 (190)	1609 (198)	1617 (206)	1627 (216)
	DA(H) LPV CAT I			
	1611 (200)	1617 (206)	1627 (216)	
2.5%	OCA(H) LNAV/VNAV			
	1744 (333)	1753 (342)	1763 (352)	1773 (362)
	OCA(H) LNAV			
	1860 (449)			
Circling <sup>1) 2)</sup>	2100 (689)		2400 (989)	

DIST RWY 04	17.4	16	14.3	12	10	8	6.7	6	4	2
recommended crossing ALTITUDE (HEIGHT)	7000 (5589)	6560 (5149)	6000 (4598)	5290 (3879)	4650 (3239)	4010 (2599)	3600 (2189)	3380 (1969)	2740 (1329)	2100 (689)
ROD	GS kt		90	110	130	150				
	FT/MIN		478	584	690	796				

**CAUTION**  
0.6 NM before THR 04 Visual Segment Surface (VSS) penetrated by trees up to 1550ft AMSL.

**NOTE**  
1) Circling on request of ATC under special conditions and north of RWY only, speed and radius for category D as for category C aircraft.  
2) Circling must remain inside CTR at all times.

COR: chart title (WEF 26MAR2020)

Input data	
Operation Type	0
SBAS Provider	1
Airport Identifier	LSGG
Runway	04
Runway Direction	0
Approach Performance Designator	0
Route Indicator	
Reference Path Data Selector	0
Reference Path Identifier	E04A
LTP/FTP Latitude	461340.2340N
LTP/FTP Longitude	0060538.2400E
LTP/FTP Ellipsoidal Height (metres)	479.9
FPAP Latitude	461505.8430N
Delta FPAP Latitude (seconds)	85.6090
FPAP Longitude	0060743.8945E
Delta FPAP Longitude (seconds)	125.6545
Threshold Crossing Height	50.0
TCH Units Selector	0
Glidepath Angle (degrees)	3.00
Course Width (metres)	105.00
Length Offset (metres)	144
HAL (metres)	40.0
VAL (metres)	35.0
Output data	
Data Block	10 07 07 13 0C 04 00 00 01 34 30 05 14 BE D6 13 80 80 9D 02 BF 26 D2 9C 02 AD D5 03 F4 01 2C 01 64 12 C8 AF 03 D3 C8 33
Calculated CRC Value	03D3C833
Required Additional Data	
ICAO Code	LS
LTP/FTP Orthometric Height (metres)	430.1
FPAP Orthometric Height (metres)	