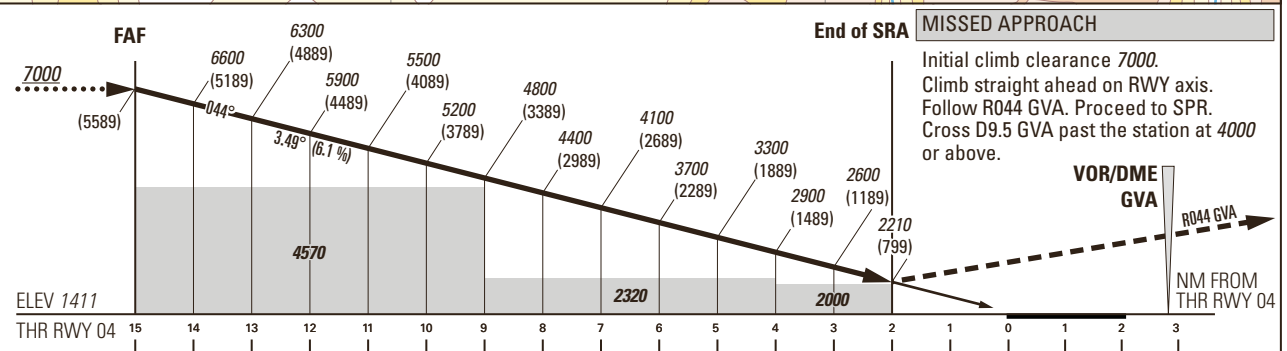
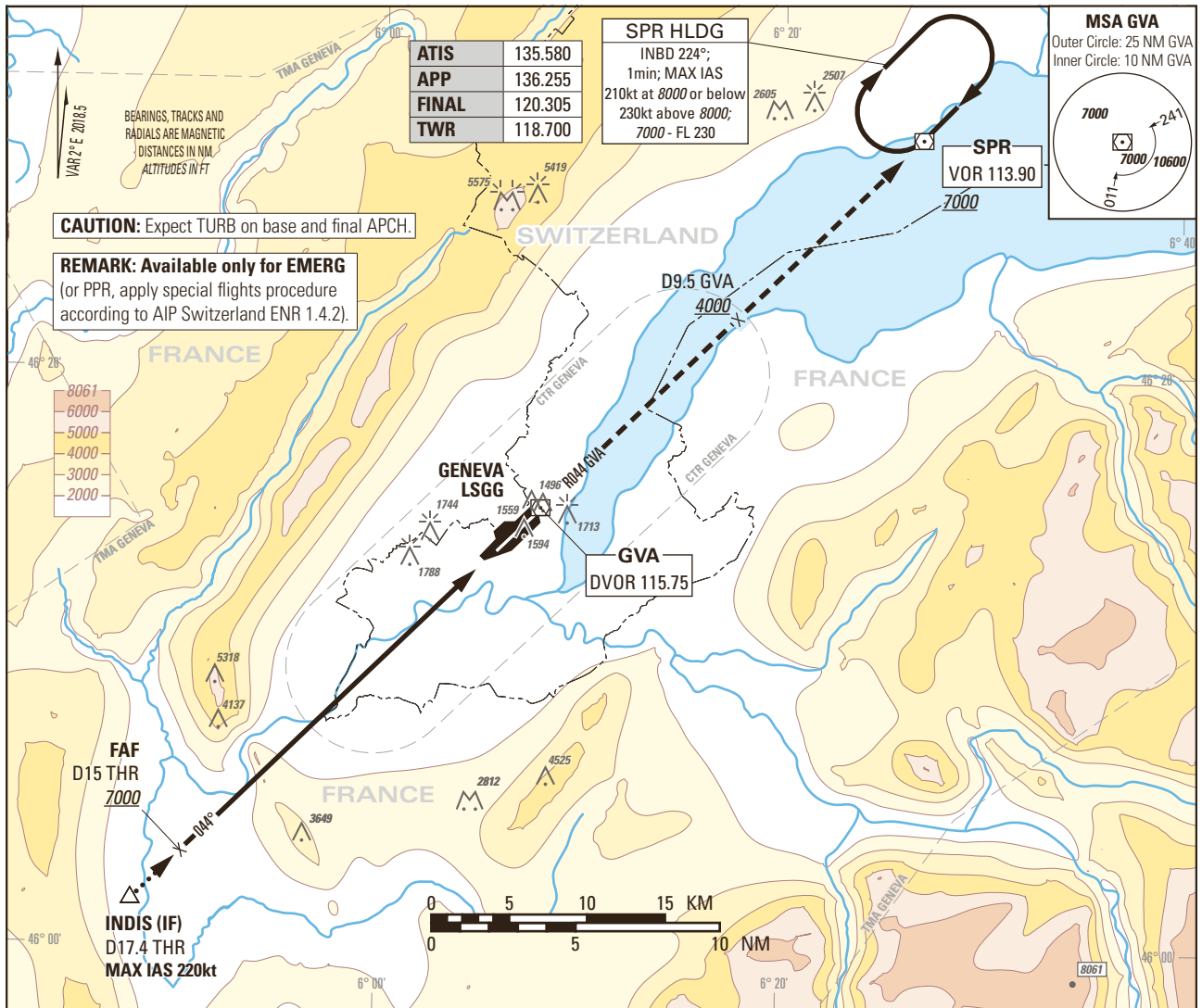


Instrument Approach Chart
(IAC) - ICAO

AD ELEV 1411ft

TRANSITION LEVEL by ATC
TRANSITION ALTITUDE 7000

GENEVA LSGG
SRA RWY 04



RADAR FIX	15	14	13	12	11	10	9	8	7	6	5	4	3	2
recommended crossing ALTITUDE (HEIGHT)	7000 (5589)	6600 (5189)	6300 (4889)	5900 (4489)	5500 (4089)	5200 (3789)	4800 (3389)	4400 (2989)	4100 (2689)	3700 (2289)	3300 (1889)	2900 (1489)	2600 (1189)	2210 (799)

ROD	GS kt	90	110	130	150
	FT/MIN	556	680	803	927

OBSTACLE CLEARANCE ALTITUDE (HEIGHT)				
	A	B	C	D
Surveillance Radar Approach	2210 (799)			
Circling ¹⁾²⁾	2210 (799)		2400 (990)	

NOTE

¹⁾ Above aerodrome ELEV 1411ft, circling on request of ATC under special conditions and north of RWY 04 only, speed and radius for category D as for category C aircraft.

²⁾ Circling must remain inside CTR at all times.

CAUTION
- 0.5 NM BFR THR 04 Visual Segment Surface (VSS) penetrated by trees up to 1550ft AMSL.

COR: MSA (WEF 28MAR2019)

THIS PAGE INTENTIONALLY LEFT BLANK