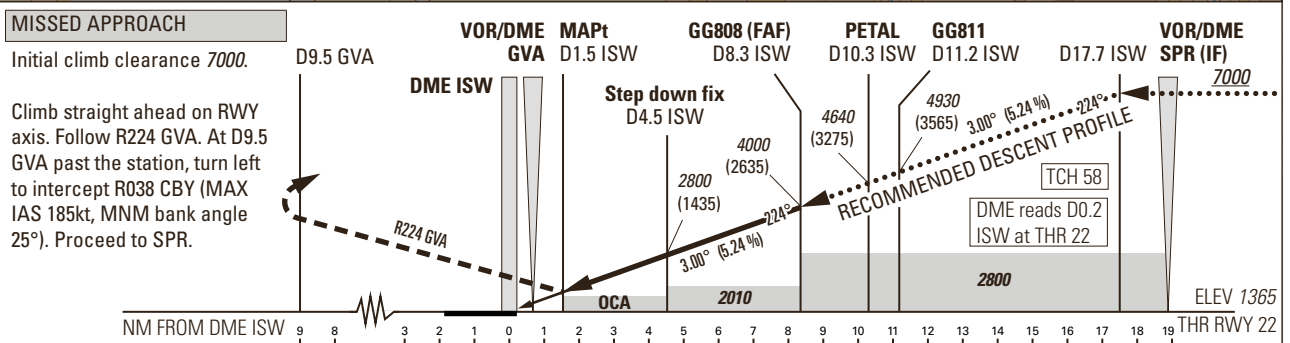
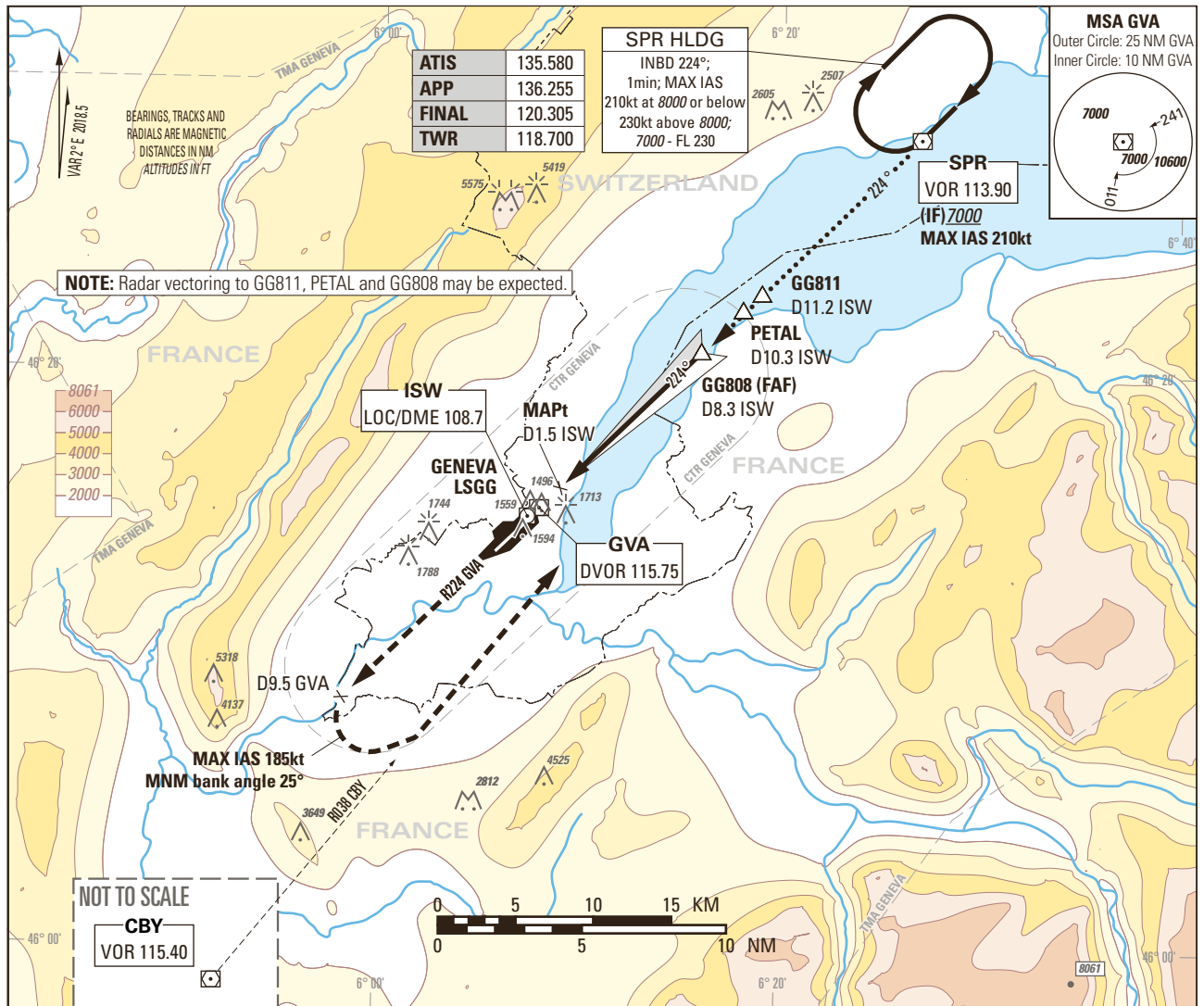


Instrument Approach Chart
(IAC) - ICAO

AD ELEV 1411ft

TRANSITION LEVEL by ATC
TRANSITION ALTITUDE 7000

GENEVA LSGG
LOC RWY 22



OBSTACLE CLEARANCE ALTITUDE (HEIGHT)	Missed APCH climb gradient	A				B				C				D				ROD	GS kt	FT/MIN	
		2	4	6	8	2	4	6	8	2	4	6	8	2	4	6	8				90
Straight-in approach ¹⁾	2.5%	2040 (675)																478	584	690	796
	2.8% to 4500	1840 (475)																			
Circling ^{2) 3)}		2100 (689)								2400 (989)											

DIST DME ISW	2	4	6	8	10	12	14	16
recommended crossing ALTITUDE (HEIGHT)	2000 (635)	2640 (1275)	3280 (1915)	3910 (2545)	4550 (3185)	5190 (3825)	5820 (4455)	6460 (5095)

NOTE

¹⁾ Above THR elevation 1365ft, MAPt at 1.3NM THR22 (1.5NM DME ISW).

²⁾ Above aerodrome ELEV 1411ft, circling on request of ATC under special conditions and north of RWY only, speed and radius for category D as for category C aircraft.

³⁾ Circling must remain inside CTR at all times.

COR: FREQ ISW (WEF 13AUG2020)

THIS PAGE INTENTIONALLY LEFT BLANK