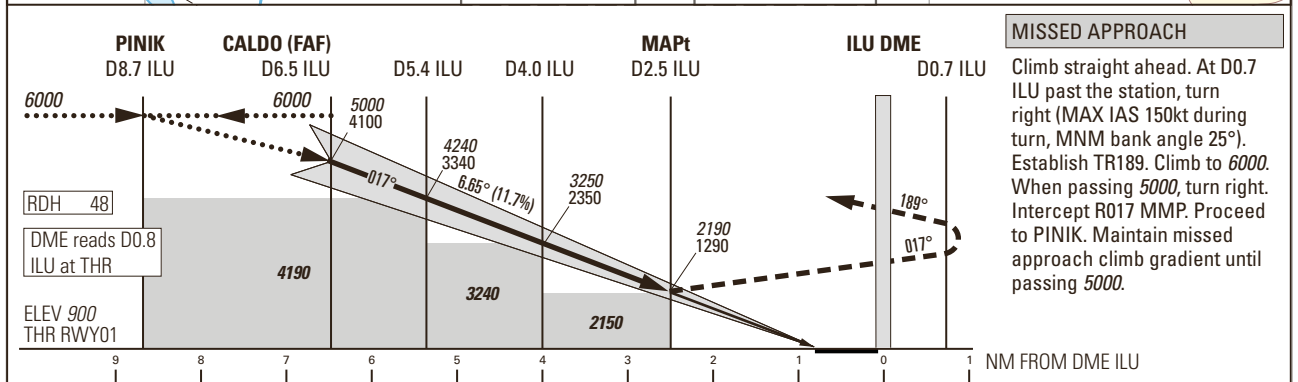
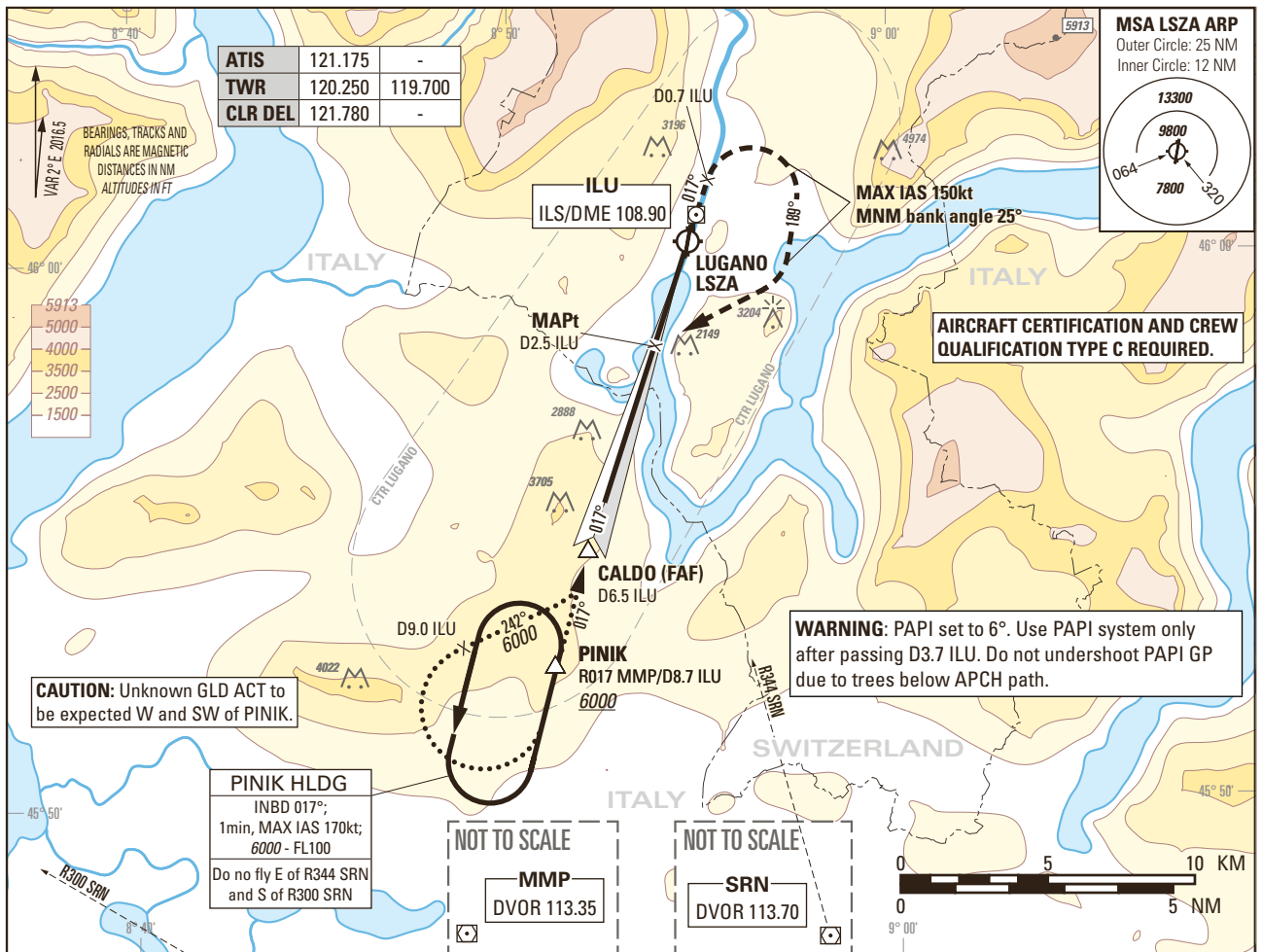


Instrument Approach Chart
(IAC) - ICAO

AD ELEV 915ft

TRANSITION LEVEL by ATC
TRANSITION ALTITUDE 6000

LUGANO LSZA
IGS RWY01 STEEP APCH 6.65°
ACFT CAT A/B



Missed APCH climb gradient requirement	OBSTACLE CLEARANCE ALTITUDE (HEIGHT) ¹⁾		VIS m	Conditions	DME ILU															
	STRAIGHT-IN APPROACH				RECOMMENDED CROSSING ALTITUDE (HEIGHT)															
	A ^{2) 3)}	B ^{2) 3)}			6	5	4	3	ROD	GS kt	FT/MIN									
2.5%	3850 (2950)		7700	-	4670 (3770)	3960 (3060)	3250 (2350)	2540 (1640)	70	80	90	110	130	150	826	945	1063	1299	1535	1771
5.0%	3190 (2290)		6000	Missed APCH climb gradient shall be maintained up to 5000 according to AFM performance data.	CAUTION															
6.0%	2920 (2020)		5300		- APCH prohibited if GP U/S. - This is not a standard APCH angle. - On 6.65° APCH angle and GS>80kt resulting ROD will be>1000ft/min.															
7.0%	2650 (1750)		4600		NOTE															
8.0%	2390 (1490)		3800		¹⁾ Circling according specific APCH chart. ²⁾ Higher CAT of ACFT may use the same PROC if they comply with the following speed limitations: Initial APCH 180kt; Final APCH 130kt; Circling 135kt; Holding 170kt; Initial missed APCH 130kt; Final missed APCH 150kt.															
9.0%	2150 (1250)		3200		³⁾ Published OCA(H) and VIS only applicable when airport qualification recency requirements according AIP LSZA AD 2.22 are met.															

COR: FREQ 122.550 withdrawn (WEF 30JAN2020)

THIS PAGE INTENTIONALLY LEFT BLANK