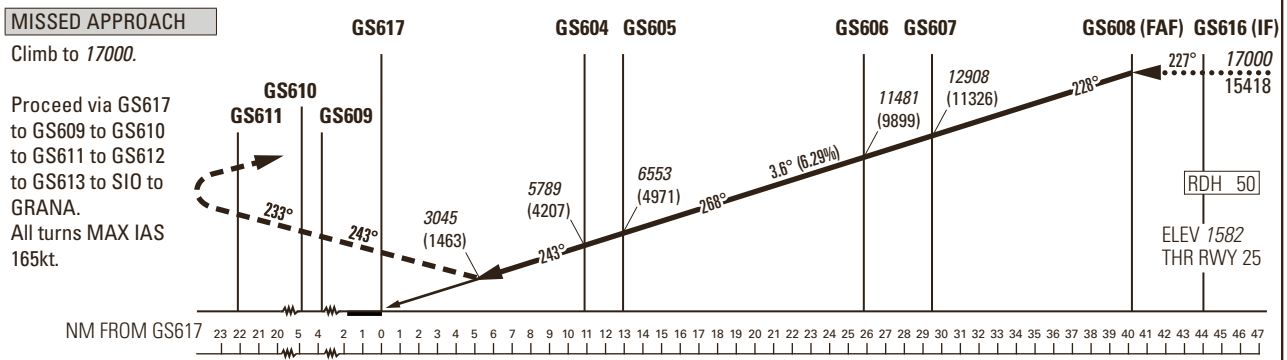
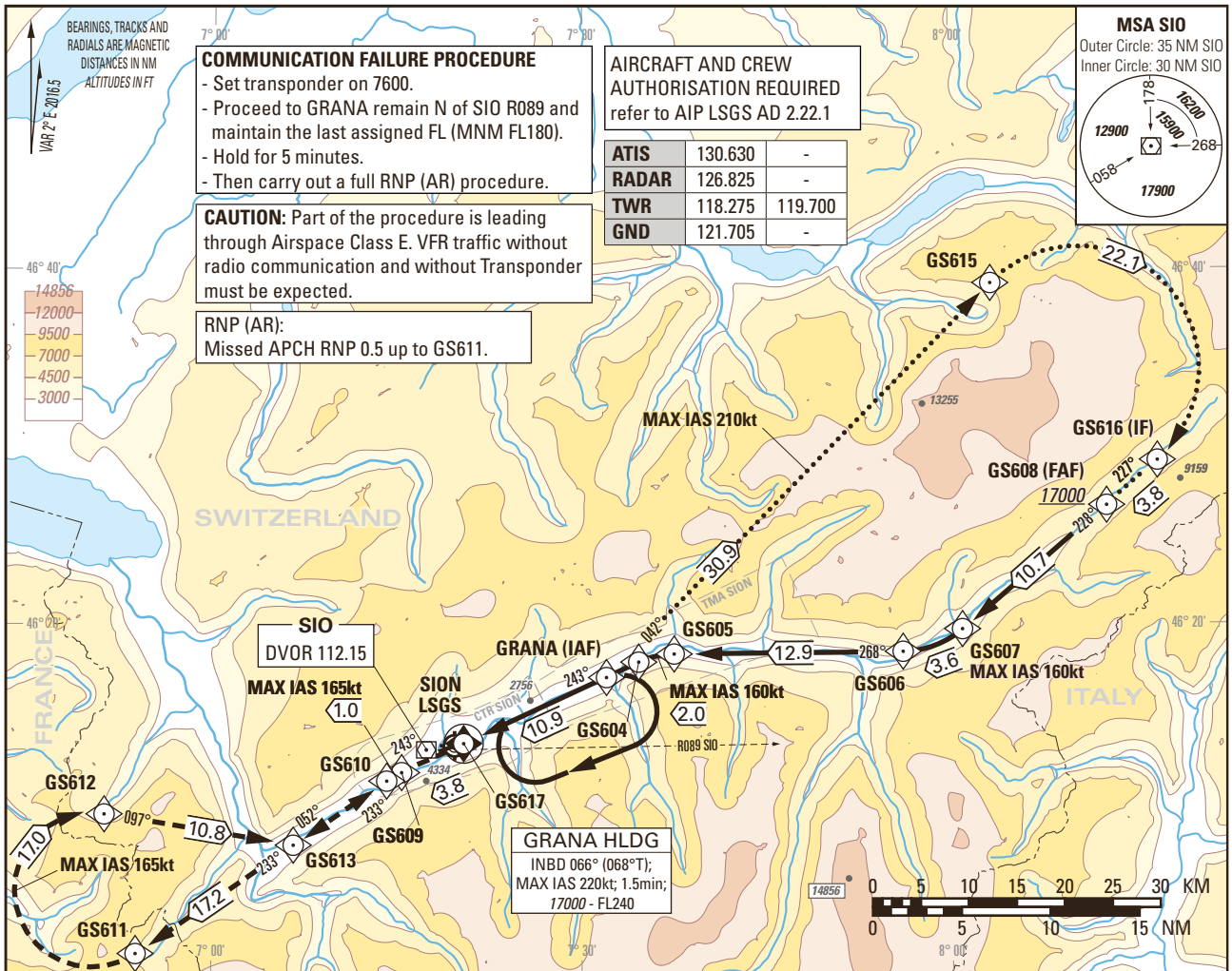


Instrument Approach Chart  
(IAC) - ICAO

AD ELEV 1582ft

TRANSITION LEVEL by ATC  
TRANSITION ALTITUDE 17000

SION LSGS  
RNP RWY 25 (AR)  
OFFSET 8° RIGHT  
ACFT CAT A/B/C



Missed APCH climb gradient requirement	STRAIGHT-IN APPROACH		
	OBSTACLE CLEARANCE ALTITUDE (HEIGHT)		
	A	B	C
5.0%	RNP (AR) 3071 (1489)	3084 (1502)	3098 (1516)
	DECISION ALTITUDE (HEIGHT)		
5.0%	RNP (AR) 3071 (1489)	3084 (1502)	3098 (1516)

Missed APCH WPT	GS617	GS609	GS610	GS611	GS612	GS613	SIO	GRANA
recommended CROSSING ALTITUDE (HEIGHT) for Missed APCH climb gradient 5.0%	3699 (2117)	4866 (3284)	5158 (3576)	10375 (8793)	15546 (13964)		17000 (15418)	

ROD	GS kt	80	100	120	140	160
	FT/MIN	510	640	760	890	1020

**REMARK**

- APCH not authorized when airport temperature below -20°C or above +47°C.
- RNP (AR) RDH = 50 (PAPI MEHT = 40ft).
- PAPI 4.0° not coincident with VPA.
- 0.1 NM BFR THR 25 Visual Segment Surface (VSS) penetrated by trees up to 1670ft AMSL.

**CAUTION**

- On 3.6° APCH angle and GS > 150kt resulting ROD will be > 1000ft/min.
- Final APCH track offset by 8° right from RCL intercepting the RCL 480m BFR the THR.

COR: TWR ALTN FREQ added (WEF 23MAR2023)

THIS PAGE INTENTIONALLY LEFT BLANK