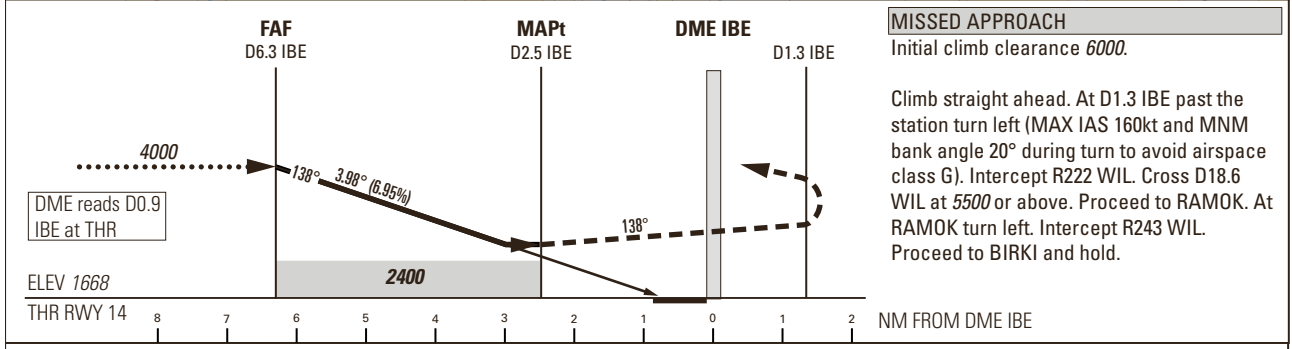
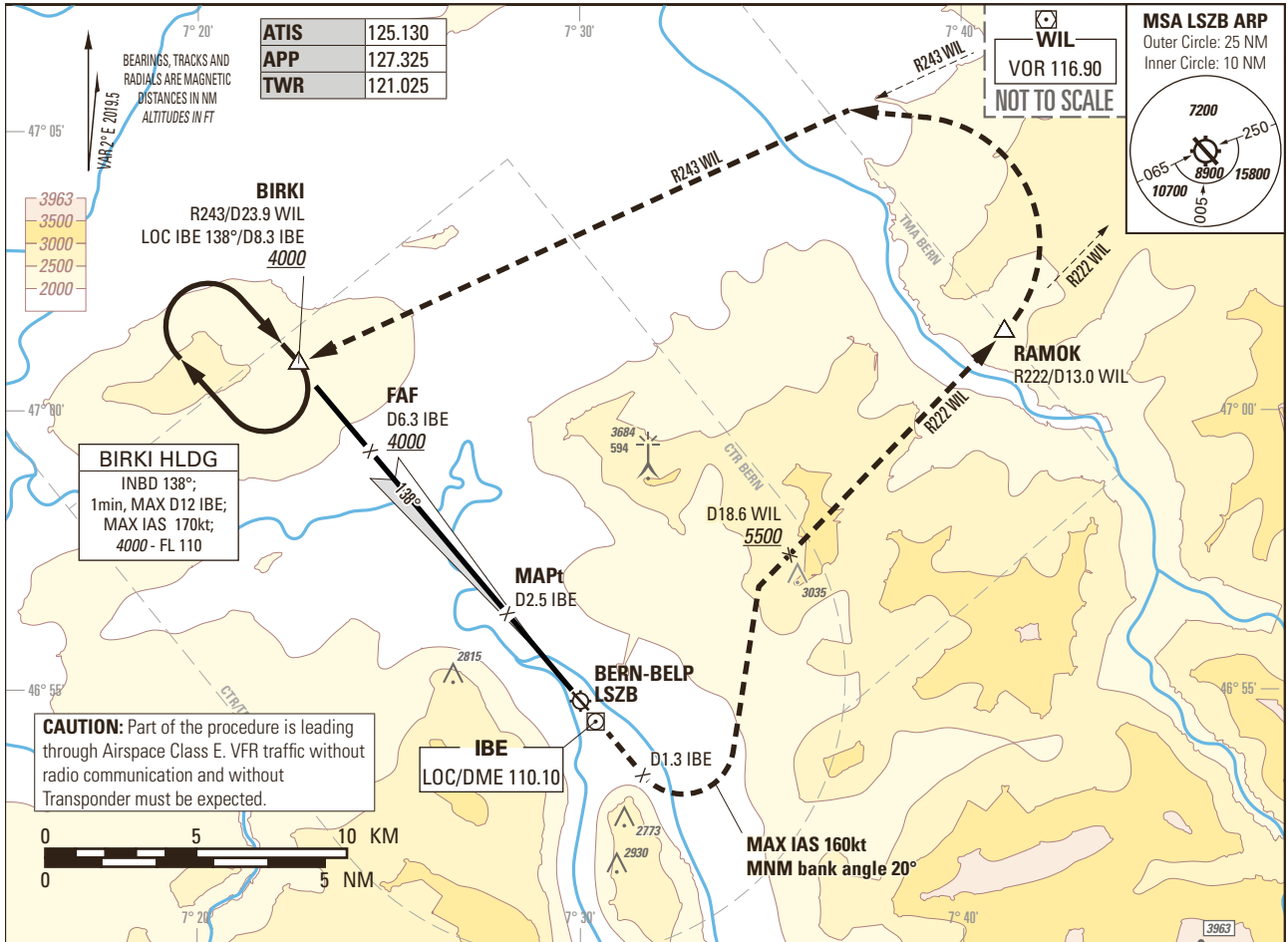


Instrument Approach Chart
(IAC) - ICAO

AD ELEV 1675ft

TRANSITION LEVEL by ATC
TRANSITION ALTITUDE 6000

BERN-BELP LSZB
LOC RWY 14
ACFT CAT A/B/C



Missed APCH climb gradient requirement	STRAIGHT-IN APPROACH		
	OCA(H)		
	A	B	C
2.5%	2570 (902)		
5.0% up to 2900	2400 (732)		
MDA(H)			
	A	B	C
2.5%	2710 (1040)		
5.0% up to 2900	2460 (790)		

DME IBE	6.3	6.0	5.0	4.0	3.0	2.0	1.0
DIST THR	5.4	5.1	4.1	3.1	2.1	1.1	0.1
ALT FT	4000	3880	3460	3040	2610	-	-

CAUTION
- 0.7 NM BFR THR14 Visual Segment Surface (VSS) penetrated by trees up to 1890ft AMSL.
- This is not a standard APCH angle.

REMARK
- Circling according to specific APCH charts.
- OBST limitation and restriction according to non-instrument RWY criteria.
- Training LOC APCH: MDA/H 3000ft / 1330ft.

ROD	GS kt	90	110	130	140
	FT/MIN	637	779	920	991

COR: Missed APCH, MNM bank angle, REMARK note (WEF 25FEB2021)

THIS PAGE INTENTIONALLY LEFT BLANK