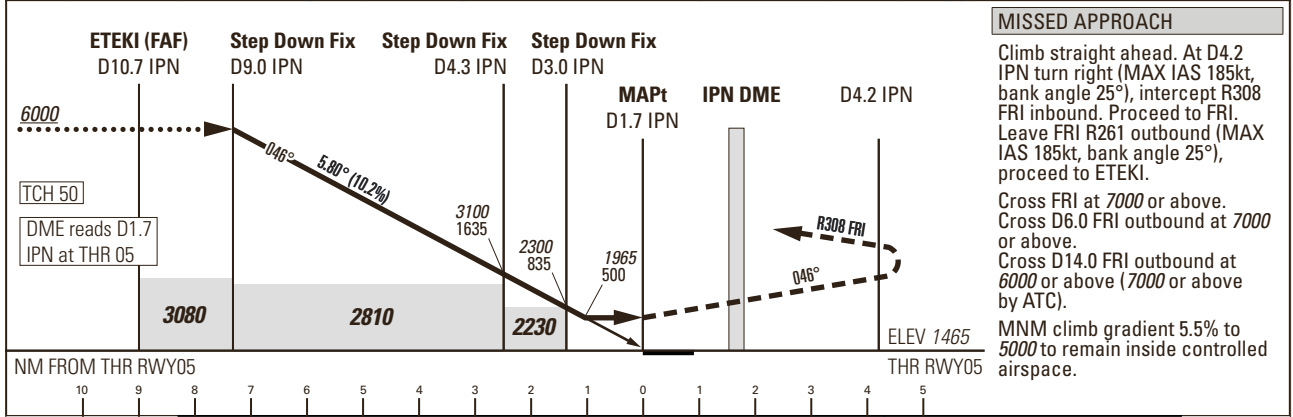
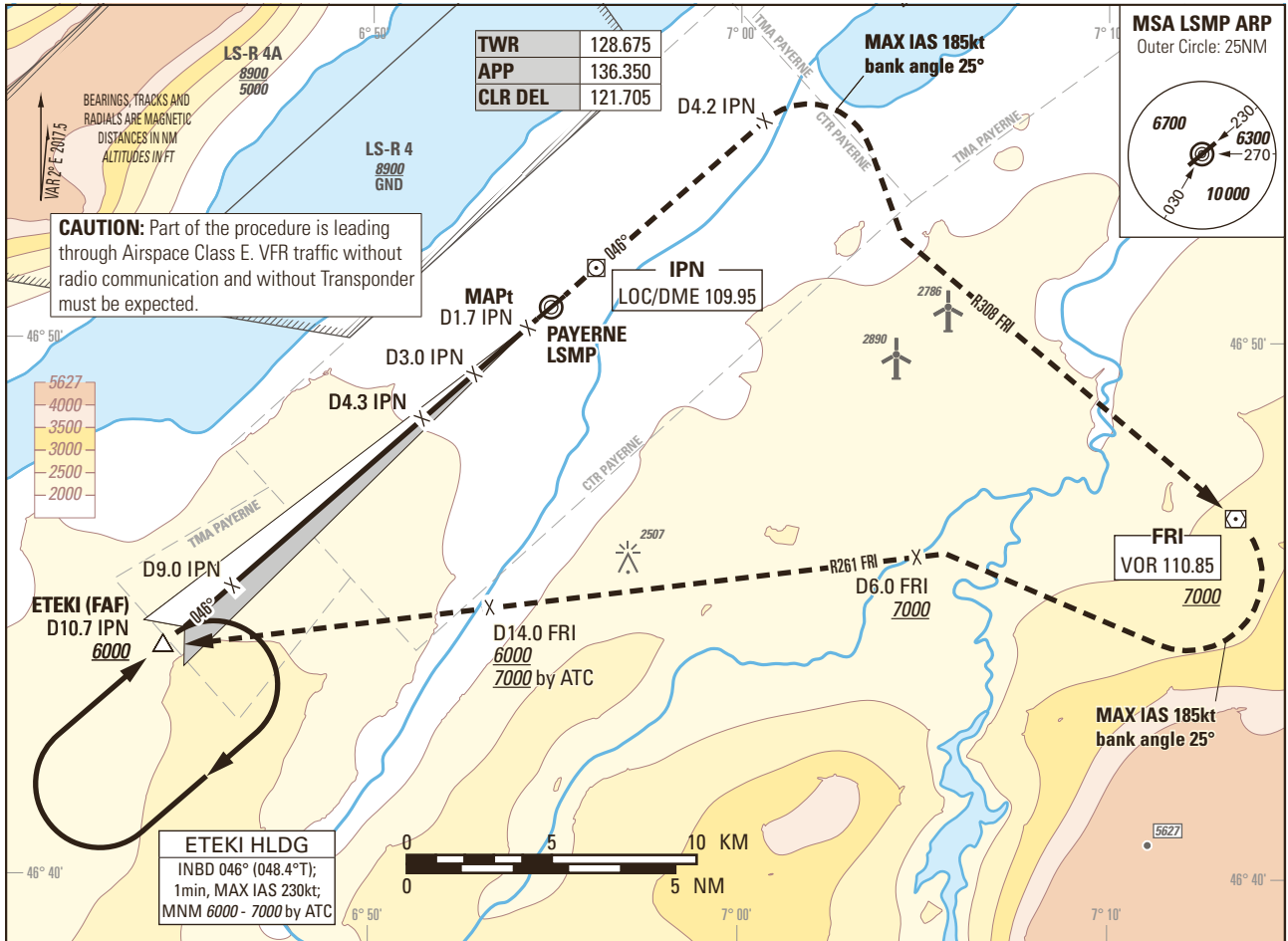


Instrument Approach Chart
(IAC) - ICAO

AD ELEV 1465ft

TRANSITION LEVEL by ATC
TRANSITION ALTITUDE 6000

PAYERNE LSMP
LOC RWY 05 (STEEP APCH 5.80°)
ACFT CAT A/B/C/D



Missed APCH climb gradient requirement	STRAIGHT-IN APPROACH			
	A	B	C	D
	OBSTACLE CLEARANCE ALTITUDE (HEIGHT)			
2.5%	2650 (1185)			
3.2% to 5200	1940 (475)			
	MINIMUM DESCENT ALTITUDE (HEIGHT)			
3.2% to 5200	1965 (500)			
CIRCLING ¹⁾	A	B	C	D
OCA(H)	2110 (645)	2450 (985)	2790 (1325)	2830 (1365)

IPN DME recommended CROSSING ALT	9	7	5	3
		6000	4770	3530

ROD	GS kt	90	110	130	150
		FT/MIN	926	1132	1337

NOTE
¹⁾ Circling north of RWY only. Circling must remain inside CTR at all time. Remain SE of Lake Neuchâtel. MAX distance parallel of RWY for all ACFT Cat: 2NM.

CAUTION
- MAX GS 115kt in final approach to avoid ROD > 1000ft/min.
- Non-standard approach angle.

COR: Completely revised (WEF 07NOV2019)

THIS PAGE INTENTIONALLY LEFT BLANK