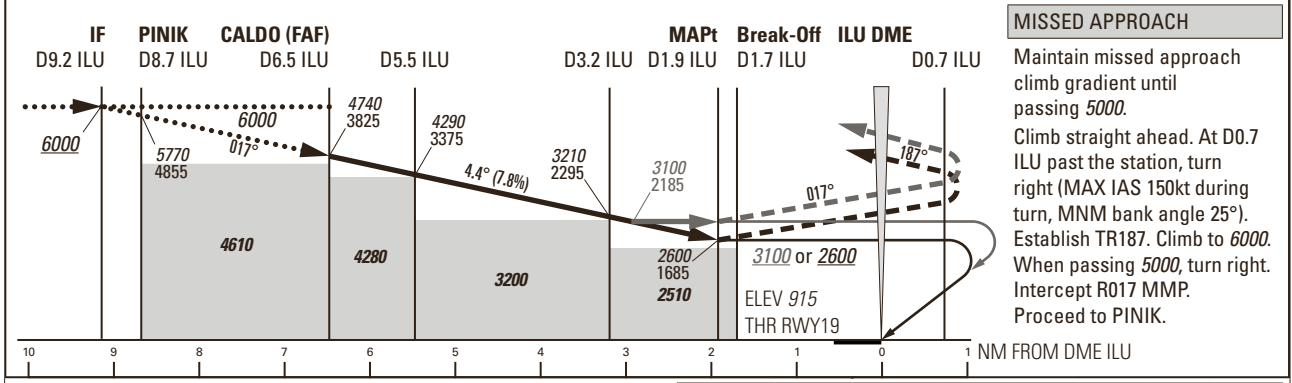
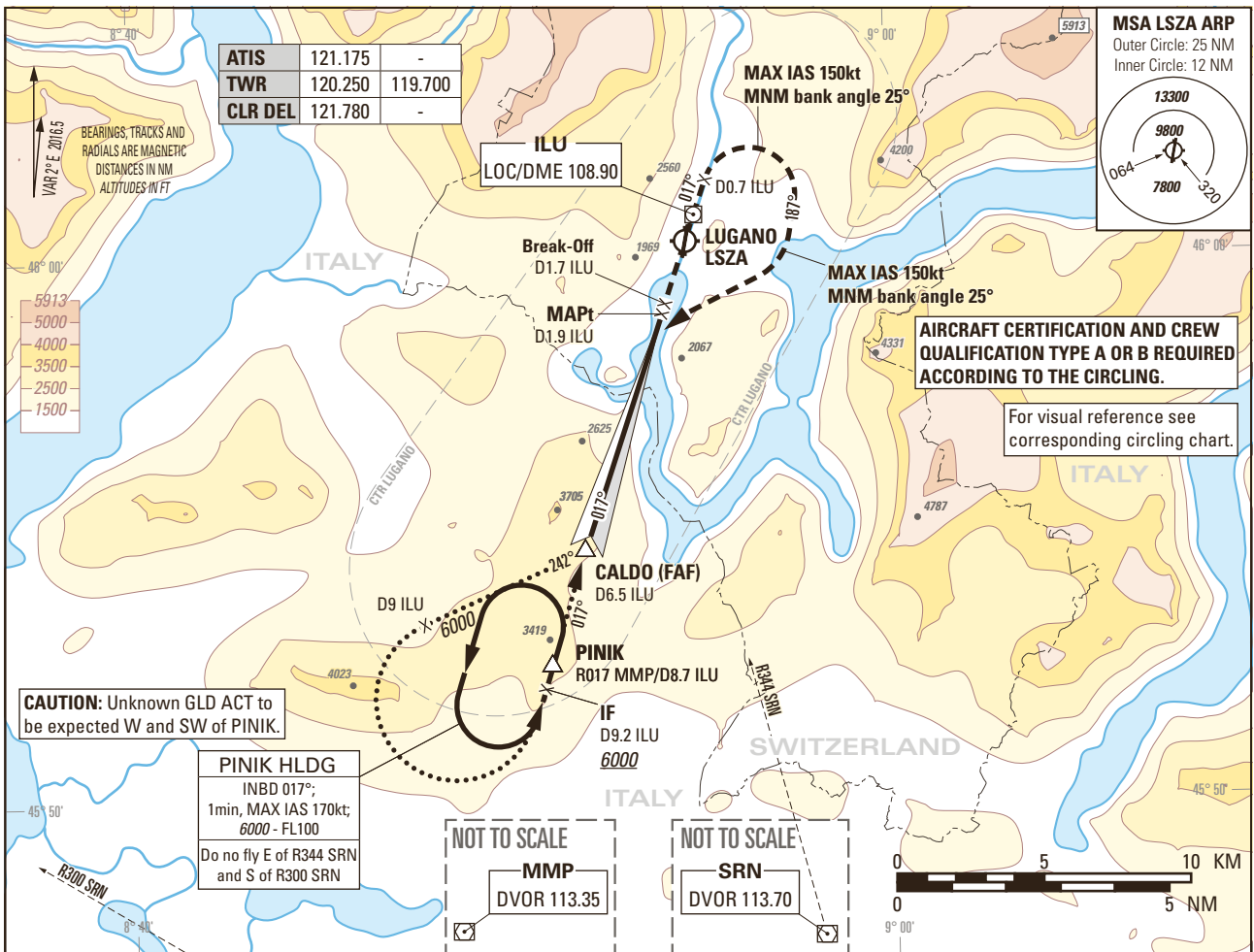


Instrument Approach Chart  
(IAC) - ICAO

AD ELEV 915ft

TRANSITION LEVEL by ATC  
TRANSITION ALTITUDE 6000

LUGANO LSZA  
LOC RWY 01 / CIRCLING RWY 19  
APPROACH 4.4°, ACFT CAT A/B



DME ILU	6	5	4	3	2
RECOMMENDED CROSSING ALTITUDE (HEIGHT)	4520 (3605)	4050 (3135)	3580 (2665)	3110 (2195)	2650 (1735)

ROD	GS kt	70	80	90	110	130	150
	FT/MIN	545	623	701	857	1013	1169

Missed APCH climb gradient requirement	OBSTACLE CLEARANCE ALTITUDE (HEIGHT) <sup>1)</sup>		VIS m
	STRAIGHT-IN APPROACH		
	A <sup>2) 3)</sup>	B <sup>2) 3)</sup>	For visibility refer to respective circling chart
2.5%	4190 (3275)		
5.0%	3380 (2465)		
6.2%	3100 (2185)		
8.3%	2600 (1685)		

**CAUTION**  
On 4.4° APCH angle and GS > 110kt resulting ROD will be >1000ft/min.

**NOTE**  
<sup>1)</sup> Circling according specific APCH chart.  
<sup>2)</sup> Higher CAT of ACFT may use the same PROC if they comply with the following speed limitations: Initial APCH 180kt; Final APCH 130kt; Circling 135kt; Holding 170kt; Initial missed APCH 130kt; Final missed APCH 150kt.  
<sup>3)</sup> Published OCA/H and VIS only applicable when airport qualification recency requirements according AIP LSZA AD 2.22 are met.

COR: FREQ 122.550 withdrawn (WEF 30JAN2020)

THIS PAGE INTENTIONALLY LEFT BLANK