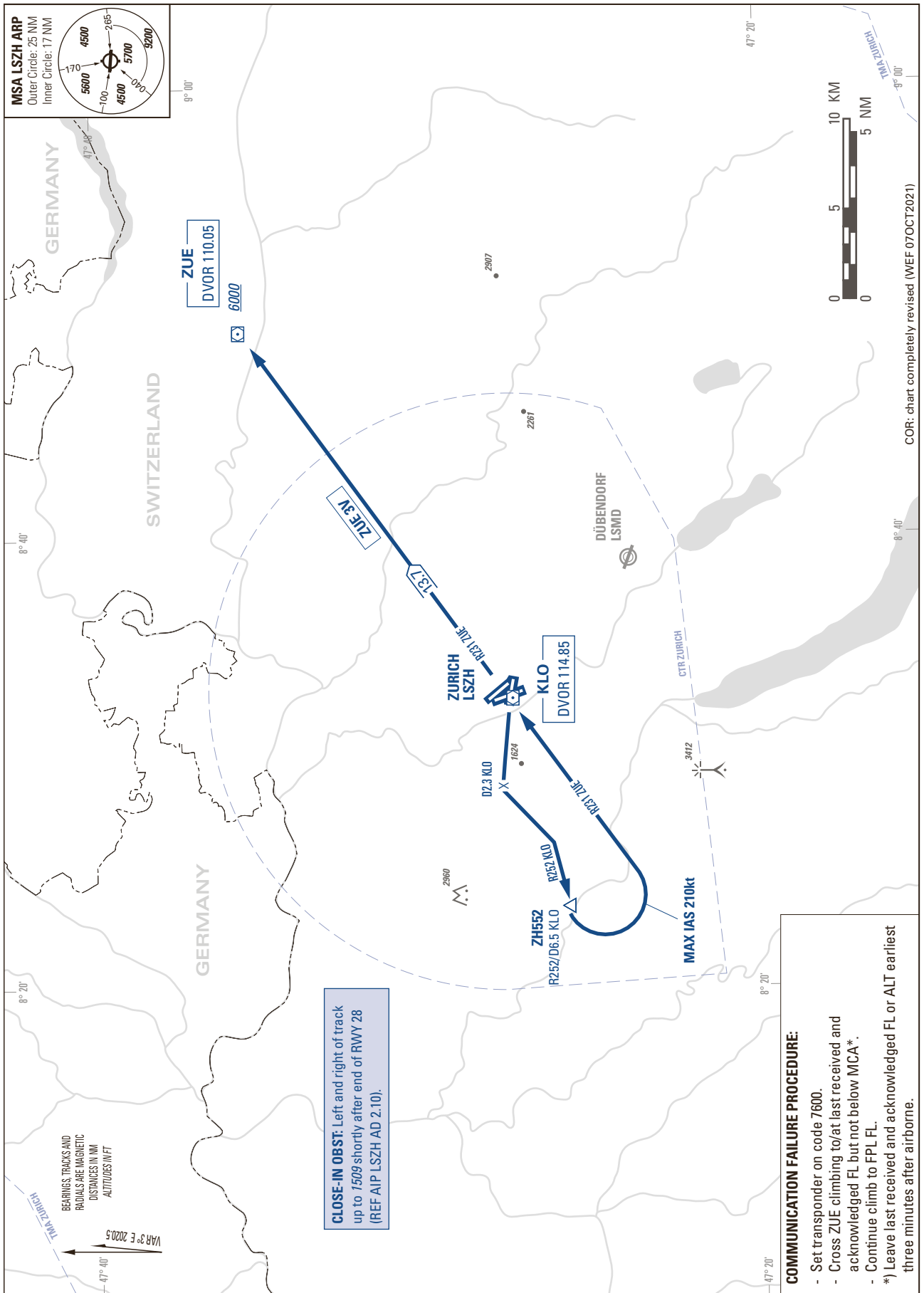


STANDARD INSTRUMENT DEPARTURE CHART  
(SID) - ICAO

TRANSITION LEVEL by ATC  
TRANSITION ALTITUDE 7000

ZURICH LSZH  
SID RWY 28 - NON RNAV



**CLOSE-IN OBST:** Left and right of track up to 1509 shortly after end of RWY 28 (REF AIP LSZH AD 2.10).

**COMMUNICATION FAILURE PROCEDURE:**

- Set transponder on code 7600.
- Cross ZUE climbing to/at last received and acknowledged FL but not below MCA\*.
- Continue climb to FPL FL.
- Leave last received and acknowledged FL or ALT earliest three minutes after airborne.

COR: chart completely revised (WEF 07OCT2021)

THIS PAGE INTENTIONALLY LEFT BLANK