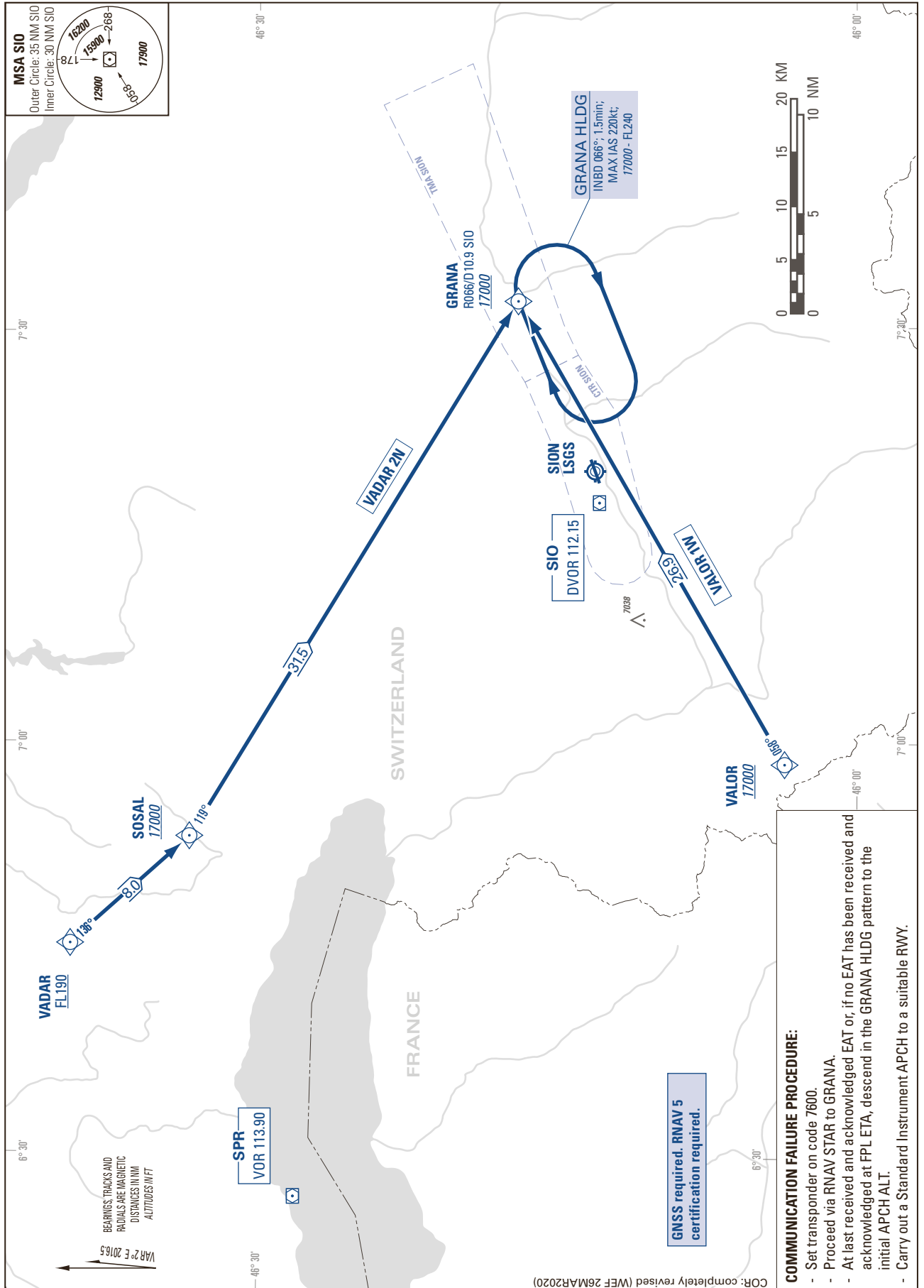


STANDARD INSTRUMENT ARRIVAL CHART  
(STAR) - ICAO

TRANSITION LEVEL by ATC  
TRANSITION ALTITUDE 17000

SION LSGS  
STAR TO GRANA - RNAV 5  
(DME/DME or GNSS)



THIS PAGE INTENTIONALLY LEFT BLANK