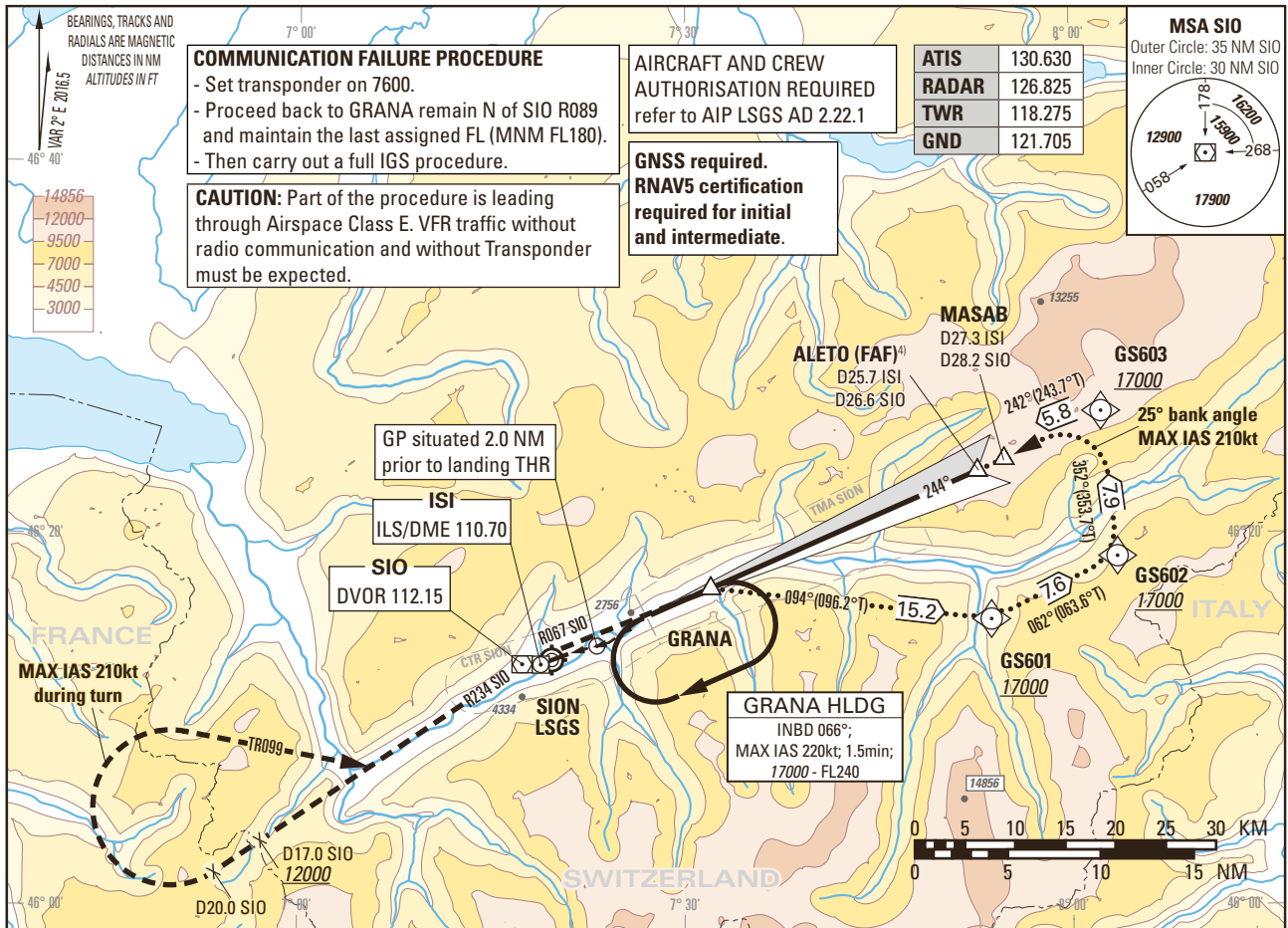


Instrument Approach Chart  
(IAC) - ICAO  
(IGS instruction: see LSGS AD 2.22)

AD ELEV 1582ft

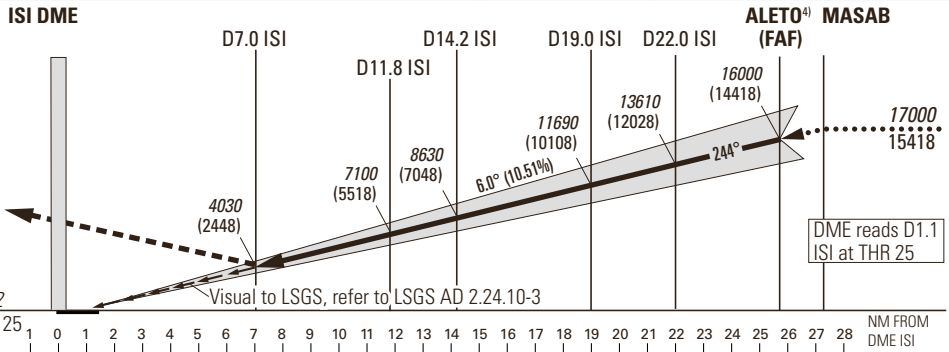
TRANSITION LEVEL by ATC  
TRANSITION ALTITUDE 17000

SION LSGS  
IGS RWY 25 (ACFT CAT A/B/C)  
OFFSET 6.5° RIGHT  
GLIDE PATH 6.0°, VISUAL PART 4.0°



**MISSED APPROACH**

Climb to 17000.  
Climb on R067 to SIO, leave SIO on R234 outbound, at D20.0 SIO turn right (MAX IAS 210kt during turn), and establish TR099 to intercept R234 SIO inbound SIO. Proceed via SIO to GRANA. Cross D17.0 SIO at 12000 or above, GRANA at 17000.



Missed APCH climb gradient requirement	STRAIGHT-IN APPROACH				VIS m
	A	B	C		
2.5%	6520 (4940) <sup>1)</sup>				5000
3.0%	6080 (4500) <sup>1)</sup>				
3.5%	5650 (4070) <sup>1)</sup>				
4.0%	5220 (3640) <sup>1)</sup>				
4.5%	4780 (3200) <sup>1)</sup>				
4.9%	4490 (2910) <sup>1)</sup>				
Circling north of AD only <sup>1) 2) 3)</sup>	3400 (1820)	5040 (3460)	6060 (4480)		5000
ROD	GS kt	90	110	130	150
	FT/MIN	958	1171	1384	1597

	7	8	9	10	12	14	16
DIST ISI	7	8	9	10	12	14	16
DIST THR	5.9	6.9	7.9	8.9	10.9	12.9	14.9
ALT FT	4030	4670	5310	5950	7220	8500	9780
DIST ISI	18	20	22	24	25	25.7	27.3
DIST THR	16.9	18.9	20.9	22.9	23.9	24.6	26.2
ALT FT	11050	12330	13610	14890	15530	16000	17000

**REMARK**  
- APCH PROHIBITED IF GP U/S.  
- Table for temperature deviation from ISA. See LSGS AD 2.23.2.  
- Final APCH offset 6.5° from RCL.  
- If unable to comply with MAX HLDG speed, inform ATC.

**CAUTION**  
- This is not a standard APCH angle.  
- 3.8 NM BFR THR 25 Visual Segment Surface (VSS) penetrated by OBST up to 4370ft AMSL.

**NOTE**  
<sup>1)</sup> Special training required. <sup>2)</sup> Night circling prohibited. <sup>4)</sup> At ALETO, GP 15970.  
<sup>3)</sup> ACFT categories A, B with speed limit of 125kt and C with speed limit of 135kt.

COR: completely revised (WEF 26MAR2020)

THIS PAGE INTENTIONALLY LEFT BLANK