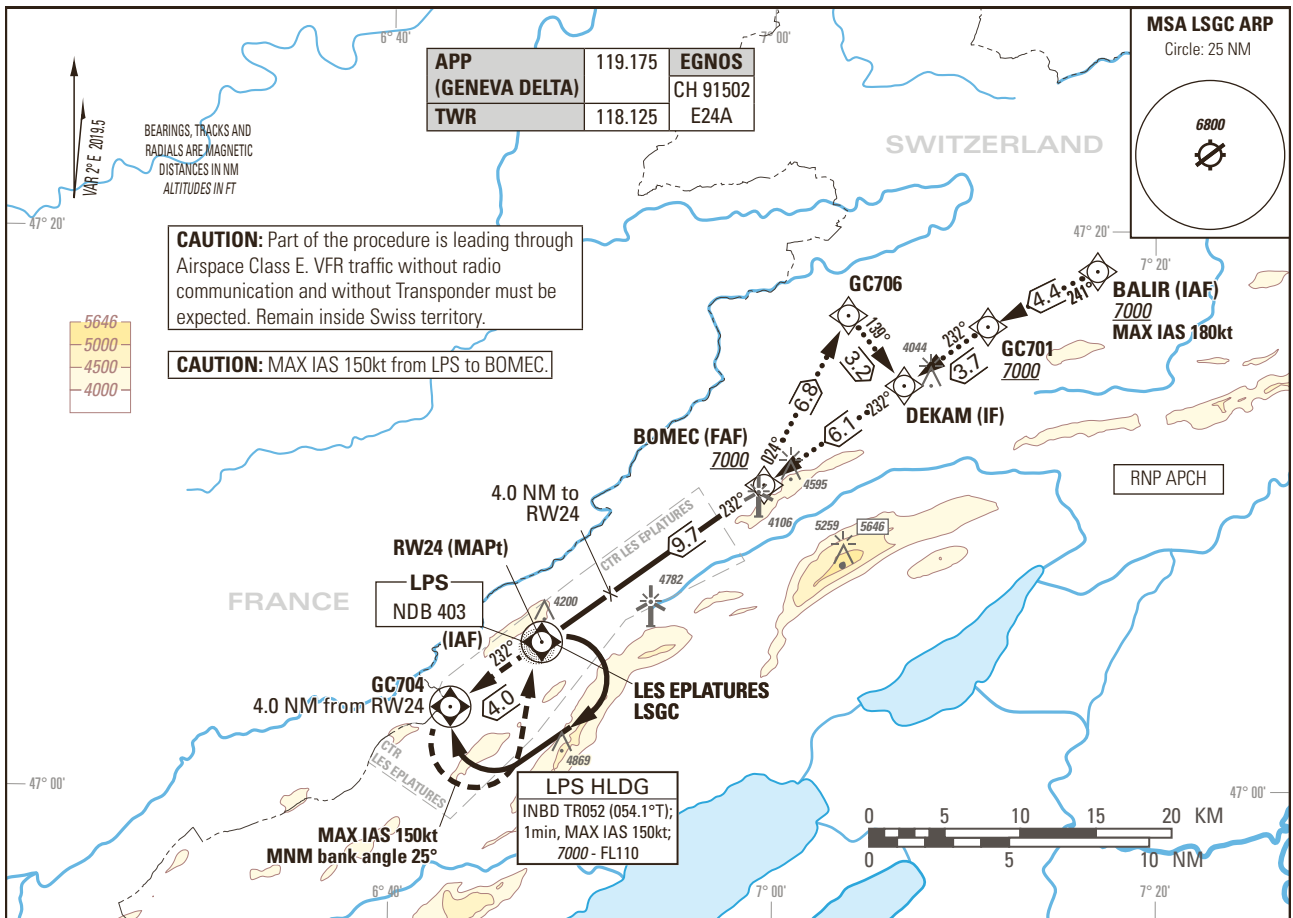


Instrument Approach Chart  
(IAC) - ICAO

AD ELEV 3368ft

TRANSITION LEVEL by ATC  
TRANSITION ALTITUDE 7000

LES EPLATURES LSGC  
RNP RWY 24  
ACFT CAT A/B



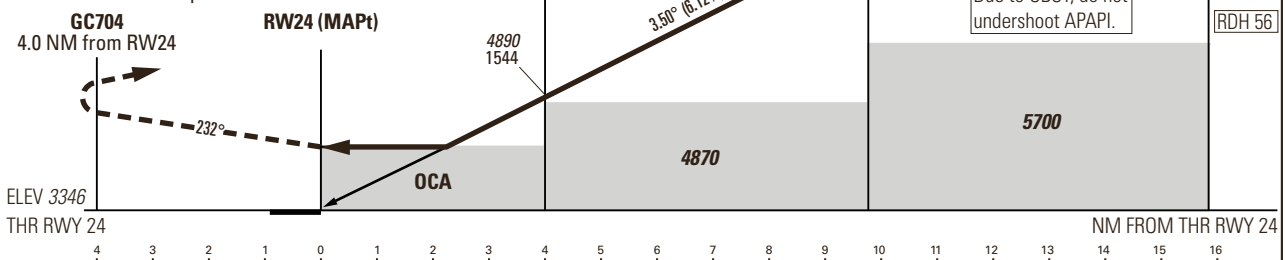
**CAUTION:** Part of the procedure is leading through  
Airspace Class E. VFR traffic without radio  
communication and without Transponder must be  
expected. Remain inside Swiss territory.

**CAUTION:** MAX IAS 150kt from LPS to BOMECE.



**MISSED APPROACH**

Initial climb clearance 7000.  
Climb straight ahead on track 232° to  
GC704, then turn left (MAX IAS 150kt during  
turn, MNM bank angle 25° to remain inside  
controlled airspace) direct to LPS and hold.  
MNM climb gradient 5.8% to 7000 to remain  
inside controlled airspace.



Missed APCH climb gradient requirement	STRAIGHT-IN APPROACH				
	A	B <sup>2)</sup>			
	OCA(H) LPV CAT I				
2.5%	3990 (644)	4004 (658)			
5.0% up to 4400	3692 (346)	3706 (360)			
	DA(H) LPV CAT I				
2.5%	3990 (644)	4004 (658)			
5.0% up to 4400	3846 (500)				
	OCA(H) LNAV				
	4410 (1064)				
Circling <sup>1)</sup>	4640 (1272)	5010 (1642)			
ROD	GS kt	90	110	130	150
	FT/MIN	558	682	806	930

RWY24 DIST	1	2	3	4	5	6	7	8	9
recommended CROSSING ALT	3770	4150	4520	4890	5260	5630	6000	6380	6750
recommended CROSSING HGT	424	804	1174	1544	1914	2284	2654	3034	3404

**REMARK**  
AIRAC date MAR - OCT 31: Intense GLD ACT within APCH Sector and ATS Routes.

**CAUTION**  
4NM BFR THR 24 Visual Segment Surface (VSS) penetrated by trees, terrain and OBST up to 3592ft AMSL.  
Gliders parked near RWY edge.

**NOTE**  
<sup>1)</sup> circling shall remain within CTR limits  
<sup>2)</sup> Higher CAT of ACFT may use the same PROC if they comply with the CAT B restrictions.

COR: BALIR MCA, Missed APCH text (WEF 22APR2021)

Input data

Operation Type	0
SBAS Provider	1 (EGNOS)
Airport Identifier	LSGC
Runway	24
Runway Letter	0 (None)
Approach Performance Designator	0
Route Indicator	
Reference Path Data Selector	0
Reference Path Identifier	E24A
LTP/FTP Latitude	470512.2145N
LTP/FTP Longitude	0064755.3165E
LTP/FTP Ellipsoidal Height (metres)	1070.1
FPAP Latitude	470452.1730N
Delta FPAP Latitude (seconds)	-20.0415
FPAP Longitude	0064714.4805E
Delta FPAP Longitude (seconds)	-40.8360
Threshold Crossing Height	17.1
TCH Units Selector	1 (meters)
Glidepath Angle (degrees)	3.50
Course Width (metres)	80.00
Length Offset (metres)	0
HAL (metres)	40.0
VAL (metres)	35.0

Output data

Data Block	10 03 07 13 0C 18 00 00 01 34 32 05 2D 1A 35 14 69 ED EA 02 CD 3D 6D 63 FF F8 C0 FE 56 81 5E 01 00 00 C8 AF AD 5C 28 C0
Calculated CRC Value	AD5C28C0

Required Additional Data

ICAO Code	LS
LTP/FTP Orthometric Height (metres)	1020.0