

ENROUTE CHART - ICAO

Switzerland - LSAS, Lower Airspace

Data WEF 16 JUN 2022

ERC-L
FIR: FL 195*
GND
*1 ED, LO: FL 245

Route Elements

- General Label for an ATS Route
- Route Designator
- Minimum Altitude in ft AMSL or in Flight Level,
- Magnetic and True Track in Degree
- Distance in Nautical Miles between Points
- Both and One Direction Route
- Cruising Level
- O/R and COMP reporting or fly-by (RNAV) Point
- Point Designator

Navigation Aids

O/R and COMP reporting or fly-by (RNAV)

- VOR
- VOR/DME
- NDB
- Ident

Aeronautical Information

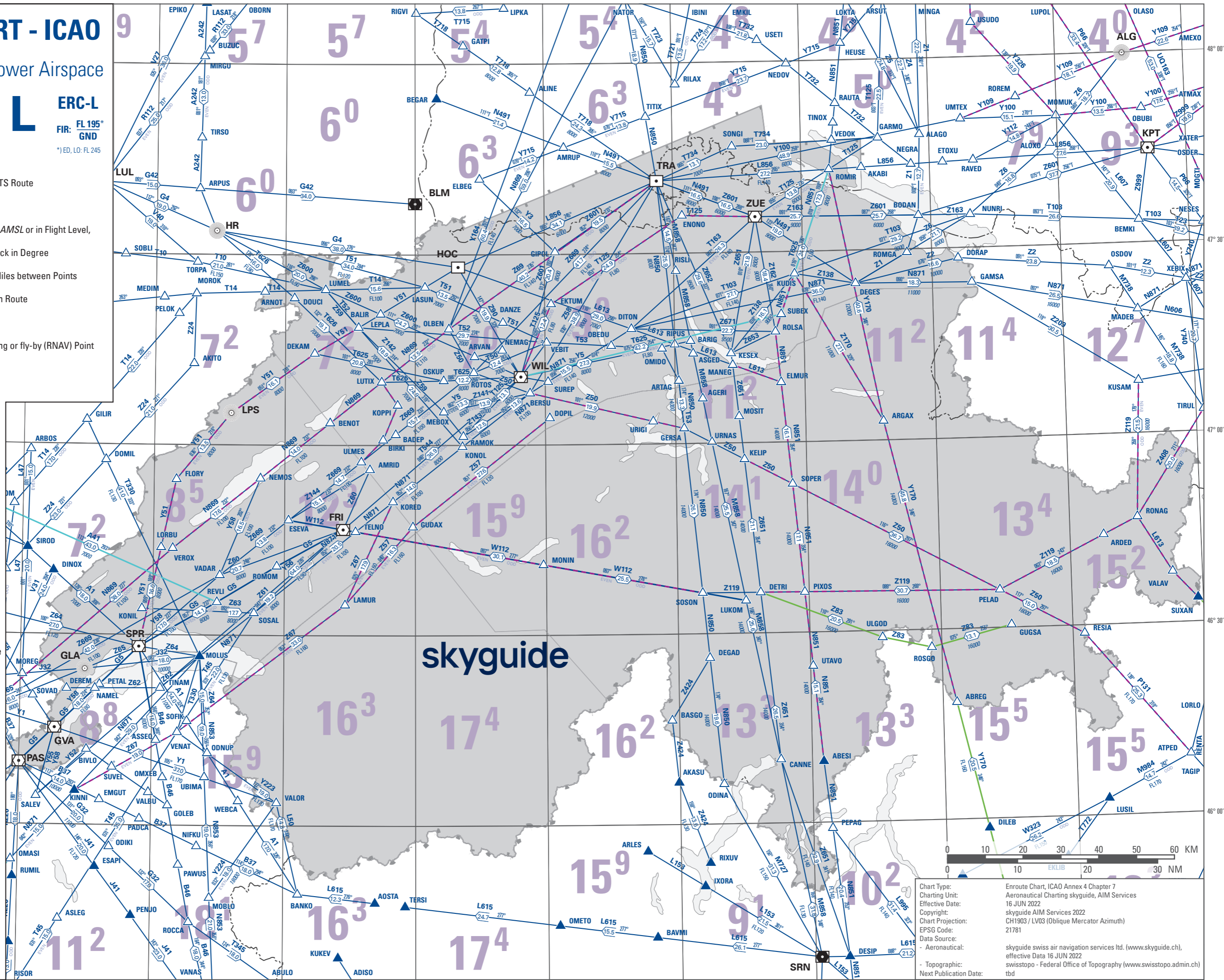
- UIR
- CTA, FIR
- Area Minimum Altitude = 7200 ft AMSL

Route Categories

- RNAV Route
- Non-RNAV Route

Conditional Routes

- CDR 1
- CDR 2
- CDR 3
- CDR 1 and CDR 2
- CDR 1 and CDR 3
- CDR 2 and CDR 3
- By ATC only



skyguide

Chart Type: Enroute Chart, ICAO Annex 4 Chapter 7
Charting Unit: Aeronautical Charting skyguide, AIM Services
Effective Date: 16 JUN 2022
Copyright: skyguide AIM Services 2022
Chart Projection: CH1903 / LV03 (Oblique Mercator Azimuth)
EPSG Code: 21781
Data Source: - Aeronautical: skyguide swiss air navigation services ltd. (www.skyguide.ch), effective Date 16 JUN 2022
- Topographic: swisstopo - Federal Office of Topography (www.swisstopo.admin.ch)
Next Publication Date: tbd