

# ENROUTE CHART - ICAO

## Switzerland - LSAS, Upper Airspace

Data WEF 16 JUN 2022

**U** **ERC-U**  
FIR: FL 660  
FL 195\*

\*) ED, LO: FL 245

### Route Elements

- General Label for an ATS Route
- Route Designator
- Minimum Altitude in ft AMSL or in Flight Level,
- Magnetic and True Track in Degree
- Distance in Nautical Miles between Points
- Both and One Direction Route
- Cruising Level
- O/R and COMP reporting or fly-by (RNAV) Point
- Point Designator

### Navigation Aids

O/R and COMP reporting or fly-by (RNAV)

- VOR
- VOR/DME
- NDB
- Ident

### Aeronautical Information

- UIR
- CTA, FIR
- Area Minimum Altitude = 7200 ft AMSL

### Route Categories

- RNAV Route
- Non-RNAV Route

### Conditional Routes

- CDR 1
- CDR 2
- CDR 3
- CDR 1 and CDR 2
- CDR 1 and CDR 3
- CDR 2 and CDR 3
- By ATC only

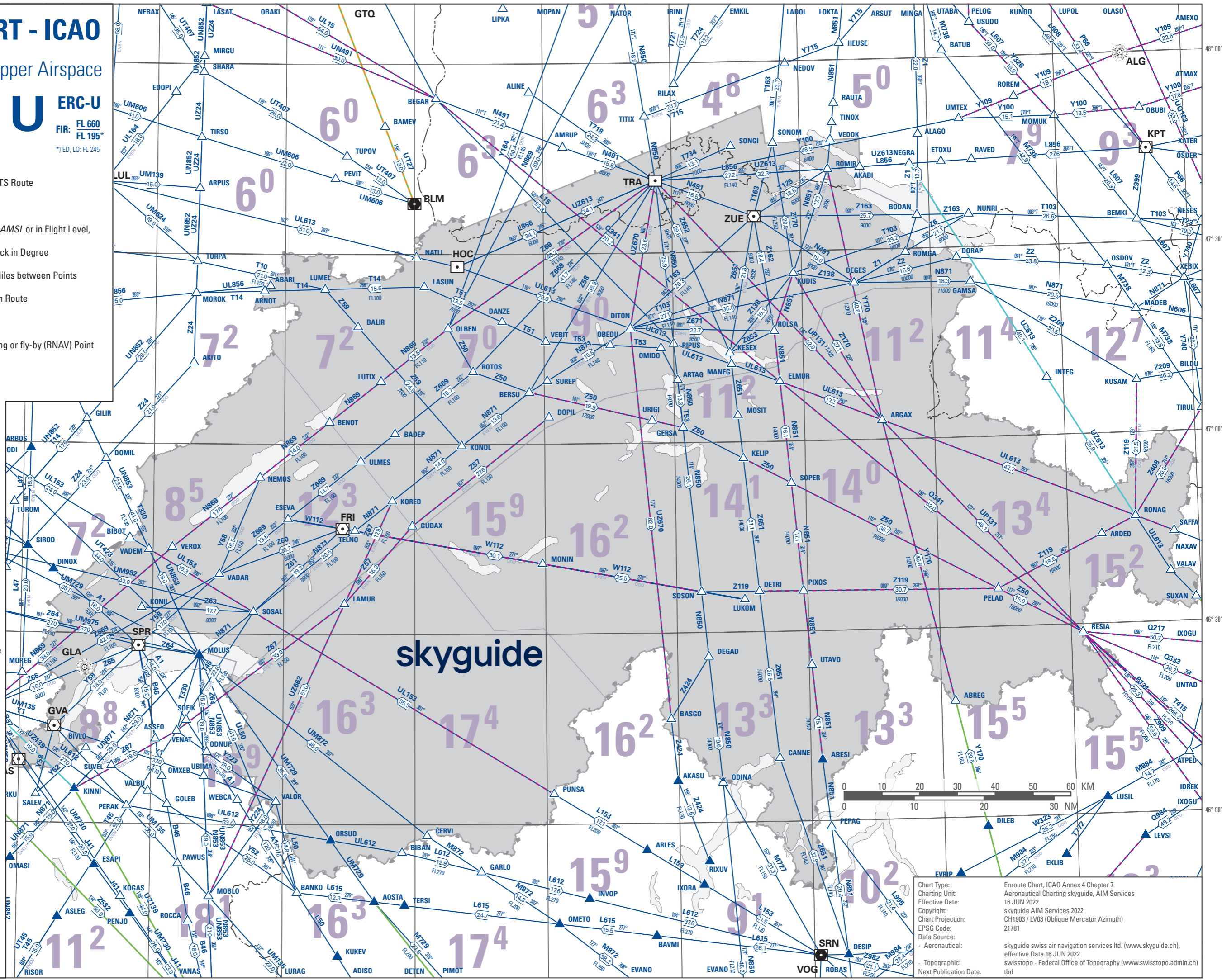


Chart Type: Enroute Chart, ICAO Annex 4 Chapter 7  
Charting Unit: Aeronautical Charting skyguide, AIM Services  
Effective Date: 16 JUN 2022  
Copyright: skyguide AIM Services 2022  
Chart Projection: CH1903 / LV03 (Oblique Mercator Azimuth)  
EPSG Code: 21781  
Data Source: - Aeronautical: skyguide swiss air navigation services ltd. (www.skyguide.ch), effective Date 16 JUN 2022  
- Topographic: swisstopo - Federal Office of Topography (www.swisstopo.admin.ch)  
Next Publication Date: tbd