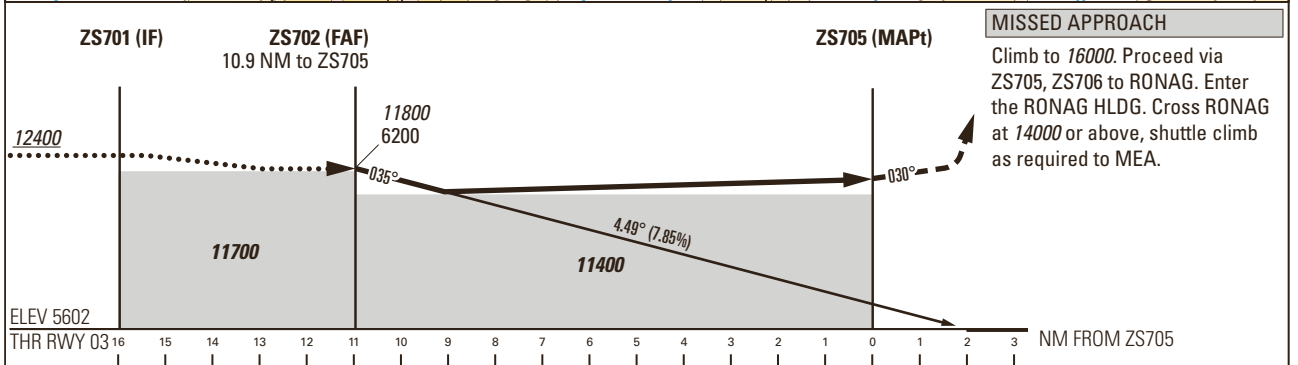
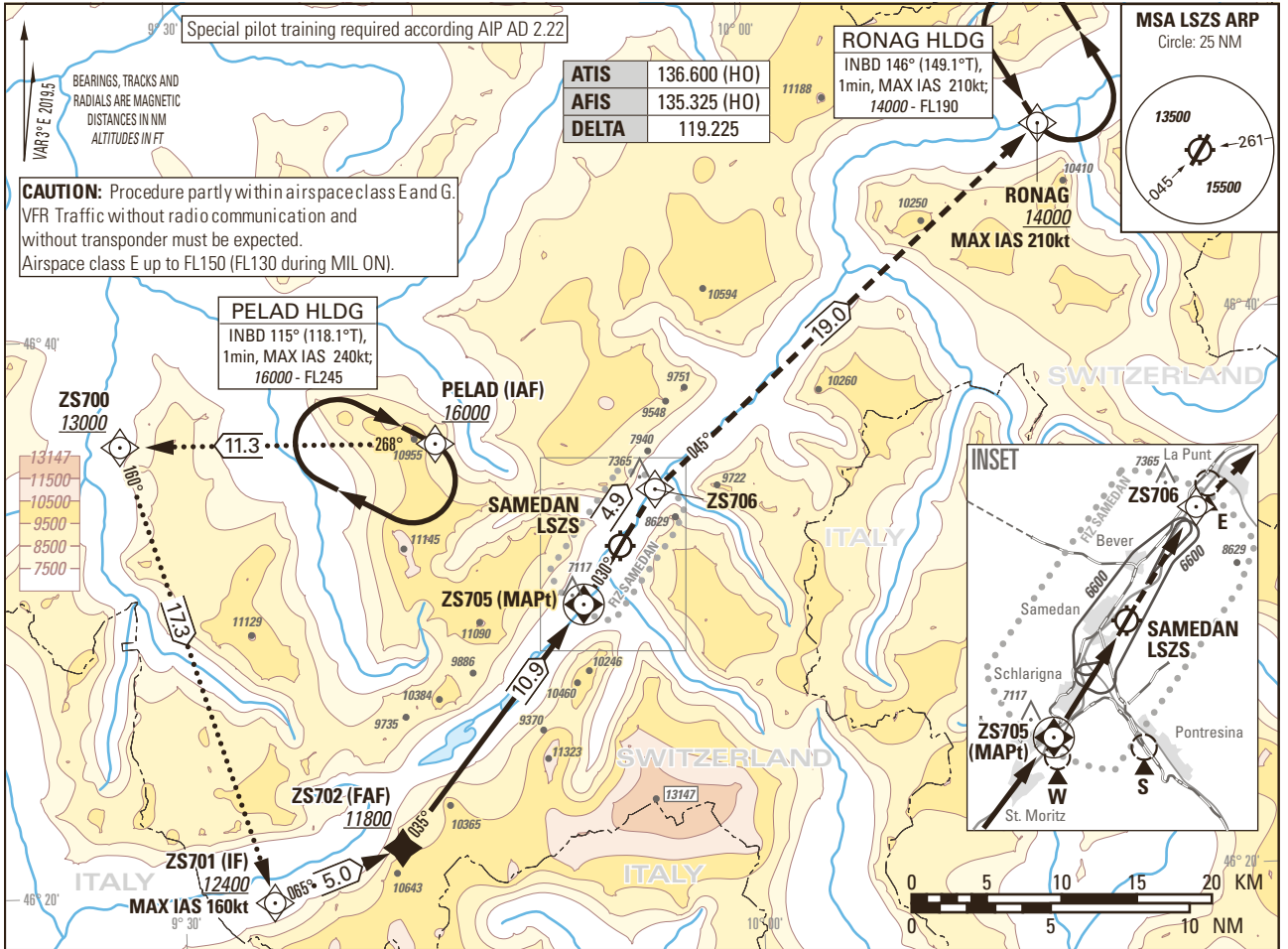


Instrument Approach Chart  
(IAC) - ICAO

AD ELEV 5602ft

TRANSITION LEVEL by ATC  
TRANSITION ALTITUDE 16000

SAMEDAN LSZS  
VISUAL APCH WITH RNP GUIDANCE RWY 03  
9.1° OFFSET LEFT  
ACFT CAT A/B/C



Missed APCH climb gradient requirement	NON-ALIGNED VISUAL APCH WITH RNP TRACK GUIDANCE			ROD	GS kt	80	100	120	140	160	180
	A	B	C		FT/MIN	636	795	954	1113	1272	1431
	MDA(H)			DIST ZS705	10.9	10	9	8	7	6	5
2.5%	11400 (5798)			DIST THR	12.9	12	11	10	9	8	7
				ALT FT	11800	11370	10890	10420	9940	9460	8980

**COMMUNICATION FAILURE PROCEDURE**  
In case of communication failure after having passed the IAF:  
- Set transponder on 7600.  
- Continue approach.  
- In case of missed approach perform two HLDG patterns at RONAG.  
- If radio contact is not re-established, proceed to ALTN AD.

**REMARK**  
- ROD 1000ft/min exceeded with GS > 125kt in final approach.  
- Approach clearance includes the clearance to leave and re-enter controlled airspace.  
- ICAO obstacle protection surface penetrated by a hill BTN ZS705 and THR 03.  
- PAPI at 4.49°.

**CAUTION**  
- Altitude adjustments for cold temperature conditions required by the flight crew.

COR: PELAD HLDG (WEF 24MAR2022)

THIS PAGE INTENTIONALLY LEFT BLANK