

---

# SWITZERLAND

Phone: +41 (0) 43 931 61 68

Telegraphic address:

AFS: AFTN: LSSAYOYX

Email: aip@skyguide.ch

**skyguide**

AIP Services  
P.O. Box  
CH-8602 Wangen bei Dübendorf  
Switzerland

**AIC 005/2022 A**

**Effective Date: 08-SEP-2022**

**End Date: 05-OCT-2022**

**Publication Date: 08-SEP-2022**

---

## Changes to airspace structure 2023

### Changes to the Swiss airspace structure 2023

The Swiss airspace structure is regularly reviewed to ensure it is fit for purpose and is adapted if deemed necessary. Based on Article 2 paragraph 1 of the Ordinance on Air Navigation Services (ANSO; SR 748.132.1), the airspace changes documented in this AIC are proposed for 2023. These changes were, on behalf of the respective applicants, elaborated by Members of the Airspace Design Expert Team (AD ET). This team is composed of members of FOCA, the MAA, the SAF and Skyguide. The general aviation associations were informed in advance about these airspace changes by FOCA in the National Airspace Management Advisory Committee (NAMAC).

Before any decisions on the airspace changes are taken, stakeholders are hereby given the opportunity to provide their opinion for those changes where they are affected.

**The opinion shall be submitted in writing, including a rationale, latest 6 October 2022 to:**

**Federal Office of Civil Aviation  
Airspace Section  
3003 Bern**

Any airspace change is subject to a positive safety and risk assessment, which, for procedural and scheduling reasons, may not have been fully completed at the time of the publication of this AIC.

The FOCA will consider submitted opinions, prior to deciding on changes to the Swiss airspace structure. An appeal against this decision can be taken to the Federal Administrative Court.

*No correspondence on submitted opinions will take place during the consultation process.*

### Publications of Swiss airspace changes for 2023

As it is required to publish any cartographic changes in a harmonised way between neighbouring states, it has been decided that the 2023 airspace changes will be published along with the aeronautical charts valid from 23-MAR-2023.

All publication requests must be coordinated in advance with the appropriate agencies and submitted to the Aeronautical Information Release Point LIFS by 8-DEC-2022.

Aeronautical Information Release Point (LIFS)

Email: lifs@bazl.admin.ch

Phone: +41 (0) 58 465 96 03

---

## 1. Conversion of firing areas into restricted areas

Following the initial conversions of firing areas into restricted flight areas as of March 2022, the second stage will take place as part of the changes to the Swiss airspace structure in 2023. They will take place for the same reasons and according to the same principle:

When the Swiss Armed Forces conduct exercises with equipment that fires up to an altitude of 250m or more above ground, a firing area must be activated for the safety of airspace users. Notice of these firing areas is published via NOTAM and DABS, alerting airspace users to the activity and the danger they pose. Flying in or through an active firing area is permitted; however, it exposes airspace users to an increased risk, with pilots being unable to take evasive action if fired on.

In future, when firing exercises are conducted with live ammunition, restricted areas (LS-Rs) will be established above firing ranges and military training areas instead of firing areas. Since it is not permitted to fly in an active LS-R, the risk for airspace users is reduced to an acceptable level. Apart from deploying Armed Forces airspace observers, this is the only way of minimising the risk, as pilots are unable to see the ammunition and take appropriate evasive action. In addition to increasing safety for airspace users, the LS-Rs create greater efficiency for the Armed Forces. Firing exercises will no longer have to be interrupted and restarted to protect incoming aircraft (or at least, much less frequently).

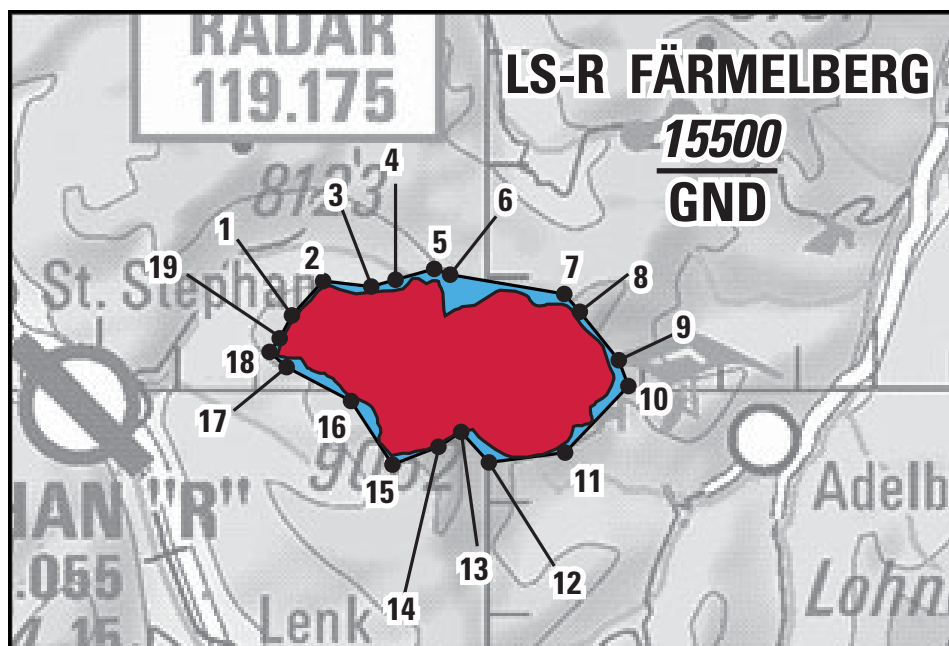
Moreover, notice of LS-Rs will be duly published in the AIP, the VFRM and, for restricted areas that are regularly active, on the ICAO chart. Coordinates and maximum activation altitudes for restricted areas are thus available to all airspace users and can also be displayed on digital planning and navigation aids. This modernisation simplifies flight preparation and the flight itself.

The firing areas currently used in Switzerland will be converted into restricted areas in stages. After the first phase in 2022, the second and provisionally last phase will take place in 2023 with the following firing ranges:

- 1.1 LS-R Färnelberg
- 1.2 LS-R Gadmen
- 1.3 LS-R Sustenpass
- 1.4 LS-R Glaubenberg/Wasserfallen
- 1.5 LS-R Wasserfallen
- 1.6 LS-R Chalchtal
- 1.7 LS-R Chlialp
- 1.8 LS-R Mätteli
- 1.9 LS-R Val Piana/Cavagnolo
- 1.10 LS-R Mundaun/Nova
- 1.11 LS-R Val Cristallina
- 1.12 LS-R Val Nalps
- 1.13 LS-R Val Rondadura
- 1.14 LS-R Val Curtegn
- 1.15 LS-R Albula Alpen E
- 1.16 LS-R Rossboden/Rheinsand
- 1.17 LS-R Frauenfeld
- 1.18 LS-R Wichlen

The current firing areas are shown in red and the proposed LS-Rs in blue. The proposed LS-Rs are slightly larger than the current firing areas in order to provide light aircraft with suitable points for navigating around the LS-Rs. The activation frequency indicated for each LS-R corresponds to the maximum number of activation days per year. There are also some LS-Rs with different maximum heights. Their upper limits are designated as "NOTAM" on the ICAO chart, as notice of the actual activation altitude is then given via NOTAM and DABS respectively. The upper limit of the LS-R is rounded to a VFR division level so that, if at all possible in terms of altitude, a safe overflight of the LS-R at a VFR flight level is guaranteed.

1.1 LS-R Färmelberg



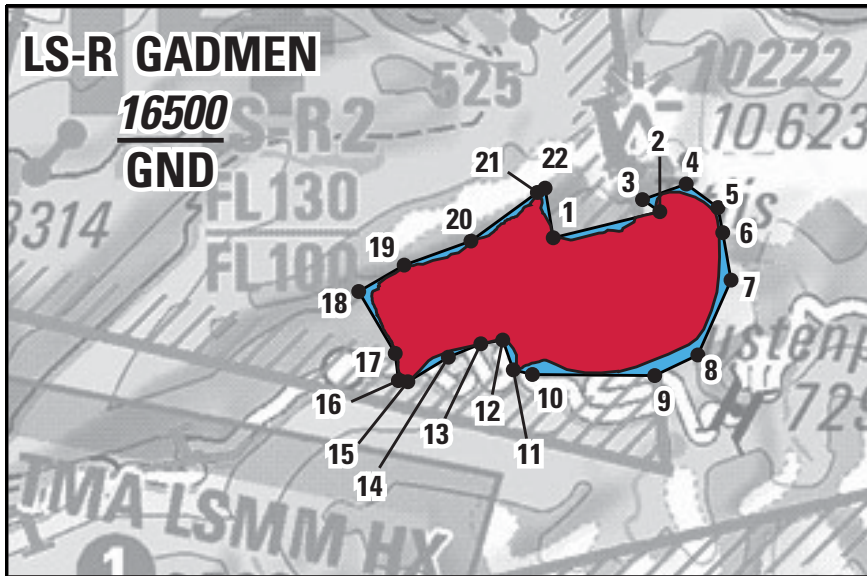
1	46 31 03.073 N	007 28 05.059 E
2	46 31 21.453 N	007 28 29.275 E
3	46 31 18.484 N	007 29 06.533 E
4	46 31 22.134 N	007 29 25.378 E
5	46 31 27.92 N	007 29 55.351 E
6	46 31 24.812 N	007 30 07.689 E
7	46 31 14.43 N	007 31 36.201 E
8	46 31 04.898 N	007 31 48.235 E
9	46 30 38.935 N	007 32 18.39 E
10	46 30 25.102 N	007 32 25.815 E
11	46 29 49.509 N	007 31 36.698 E
12	46 29 44.296 N	007 30 37.631 E
13	46 30 00.631 N	007 30 16.159 E
14	46 29 52.673 N	007 29 58.496 E
15	46 29 43.151 N	007 29 22.875 E
16	46 30 17.219 N	007 28 50.823 E
17	46 30 35.357 N	007 28 00.916 E
18	46 30 43.541 N	007 27 47.684 E
19	46 30 50.79 N	007 27 55.541 E
1	46 31 03.073 N	007 28 05.059 E

**Upper limit:** 15'500 ft AMSL (firing up to 4'500 m AMSL)

**Type of activity:** Firing activity

**Frequency:** 25 days/year

1.2 LS-R Gadmen



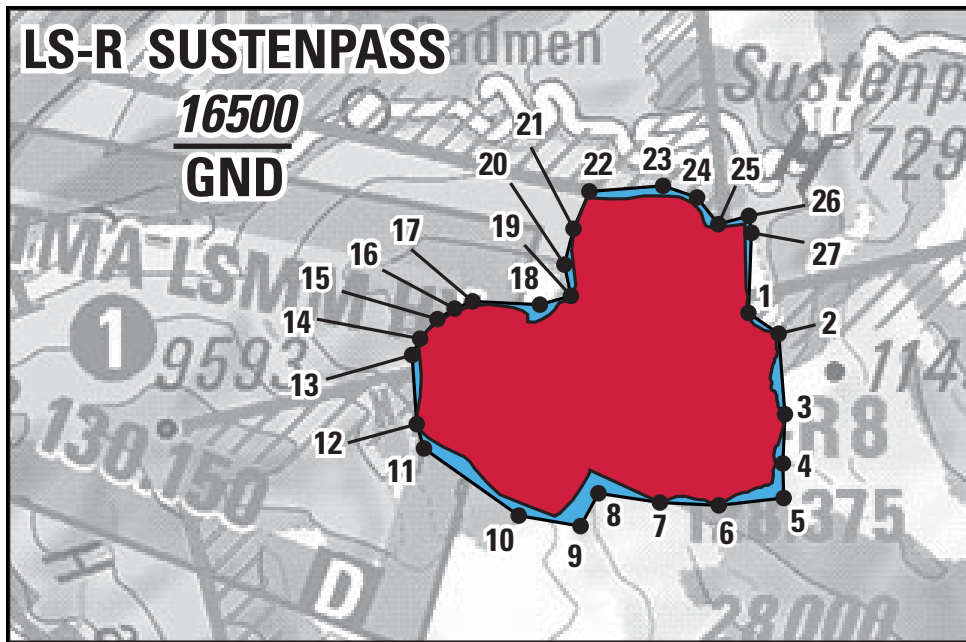
1	46 45 57.37 N	008 24 58.327 E
2	46 46 12.096 N	008 26 30.864 E
3	46 46 19.391 N	008 26 16.01 E
4	46 46 28.339 N	008 26 54.013 E
5	46 46 14.106 N	008 27 21.212 E
6	46 45 59.142 N	008 27 25.083 E
7	46 45 30.827 N	008 27 31.725 E
8	46 44 46.566 N	008 27 02.193 E
9	46 44 34.652 N	008 26 24.639 E
10	46 44 36.197 N	008 24 38.83 E
11	46 44 39.098 N	008 24 22.355 E
12	46 44 56.908 N	008 24 13.544 E
13	46 44 54.842 N	008 23 54.571 E
14	46 44 47.115 N	008 23 26.32 E
15	46 44 32.793 N	008 22 51.022 E
16	46 44 33.559 N	008 22 42.856 E
17	46 44 49.736 N	008 22 40.397 E
18	46 45 26.821 N	008 22 09.426 E
19	46 45 42.196 N	008 22 49.055 E
20	46 45 56.033 N	008 23 47.061 E
21	46 46 24.43 N	008 24 45.066 E
22	46 46 26.949 N	008 24 51.808 E
1	46 45 57.37 N	008 24 58.327 E

**Upper limit:** 16'500 ft AMSL (firing up to 5'000 m AMSL)

**Type of activity:** Firing activity

**Frequency:** 25 days/year

1.3 LS-R Sustenpass



1	46 42 50.527 N	008 26 51.507 E
2	46 42 39.188 N	008 27 14.821 E
3	46 41 56.051 N	008 27 18.898 E
4	46 41 29.713 N	008 27 16.804 E
5	46 41 11.243 N	008 27 17.036 E
6	46 41 07.727 N	008 26 26.556 E
7	46 41 09.649 N	008 25 40.79 E
8	46 41 15.008 N	008 24 53.068 E
9	46 40 57.547 N	008 24 38.86 E
10	46 41 03.586 N	008 23 50.881 E
11	46 41 40.136 N	008 22 37.804 E
12	46 41 53.236 N	008 22 32.42 E
13	46 42 30.242 N	008 22 29.418 E
14	46 42 38.926 N	008 22 35.806 E

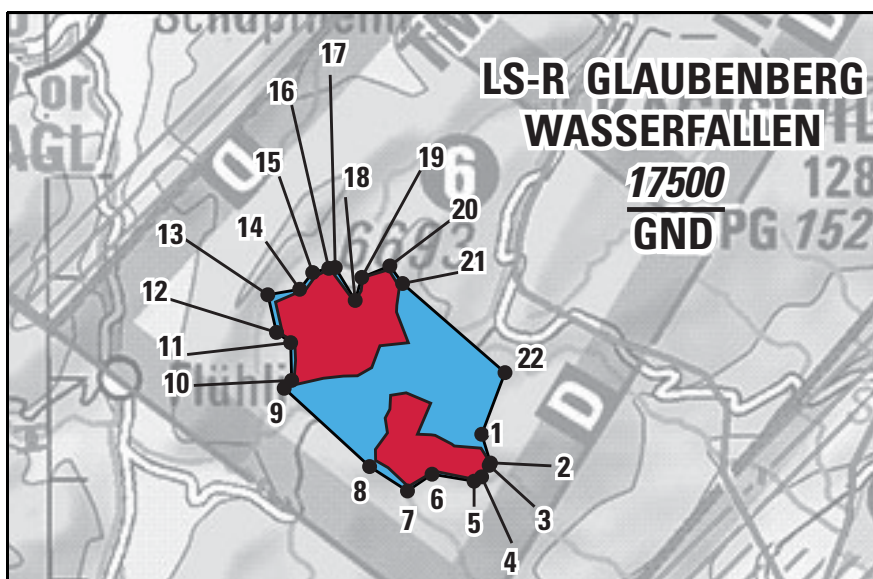
15	46 42 49.283 N	008 22 49.471 E
16	46 42 54.813 N	008 23 02.977 E
17	46 42 58.547 N	008 23 16.973 E
18	46 42 56.378 N	008 24 09.34 E
19	46 43 00.857 N	008 24 33.566 E
20	46 43 17.643 N	008 24 28.79 E
21	46 43 36.786 N	008 24 36.231 E
22	46 43 56.646 N	008 24 48.96 E
23	46 43 59.156 N	008 25 46.3 E
24	46 43 52.698 N	008 26 12.69 E
25	46 43 38.229 N	008 26 28.96 E
26	46 43 42.495 N	008 26 52.87 E
27	46 43 33.436 N	008 26 54.653 E
1	46 42 50.527 N	008 26 51.507 E

**Upper limit:** 16'500 ft AMSL (firing up to 5'000 m AMSL)

**Type of activity:** Firing activity

**Frequency:** 25 days/year (tourism closure applies from July 1<sup>st</sup> to September 15<sup>th</sup>)

#### 1.4 LS-R Glaubenberg Wasserfallen



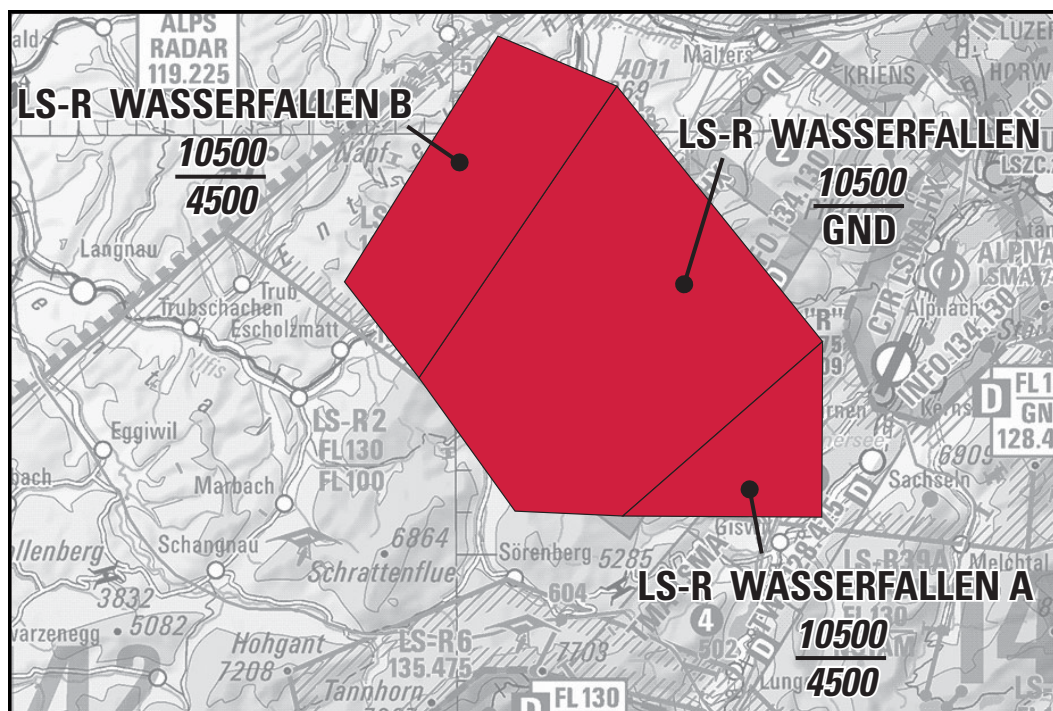
1	46 52 47.935 N	008 06 51.906 E
2	46 52 30.777 N	008 06 59.27 E
3	46 52 29.408 N	008 06 58.128 E
4	46 52 22.612 N	008 06 51.472 E
5	46 52 20.066 N	008 06 44.925 E
6	46 52 24.44 N	008 06 08.513 E
7	46 52 14.577 N	008 05 47.085 E
8	46 52 29.294 N	008 05 14.418 E
9	46 53 16.277 N	008 04 00.904 E
10	46 53 20.926 N	008 04 07.424 E
11	46 53 43.376 N	008 04 06.823 E
12	46 53 49.525 N	008 03 54.6 E
13	46 54 11.969 N	008 03 47.332 E
14	46 54 15.081 N	008 04 15.015 E
15	46 54 24.966 N	008 04 26.412 E
16	46 54 27.388 N	008 04 40.392 E
17	46 54 27.846 N	008 04 46.038 E
18	46 54 08.164 N	008 05 03.1 E
19	46 54 21.841 N	008 05 08.98 E
20	46 54 28.531 N	008 05 33.428 E
21	46 54 18.014 N	008 05 44.349 E
22	46 53 24.48 N	008 07 12.549 E
1	46 52 47.935 N	008 06 51.906 E

**Upper limit:** 17'500 ft AMSL (firing up to 5'200 m AMSL)

**Type of activity:** Firing activity

**Frequency:** 30 days/year

1.5 LS-R Wasserfallen



LS-R Wasserfallen

1	47 01 29.653 N	008 06 19.097 E
2	46 55 22.331 N	008 13 23.110 E
3	46 51 15.987 N	008 06 23.871 E
4	46 51 24.233 N	008 02 39.770 E
5	46 54 35.648 N	007 59 21.755 E
1	47 01 29.653 N	008 06 19.097 E

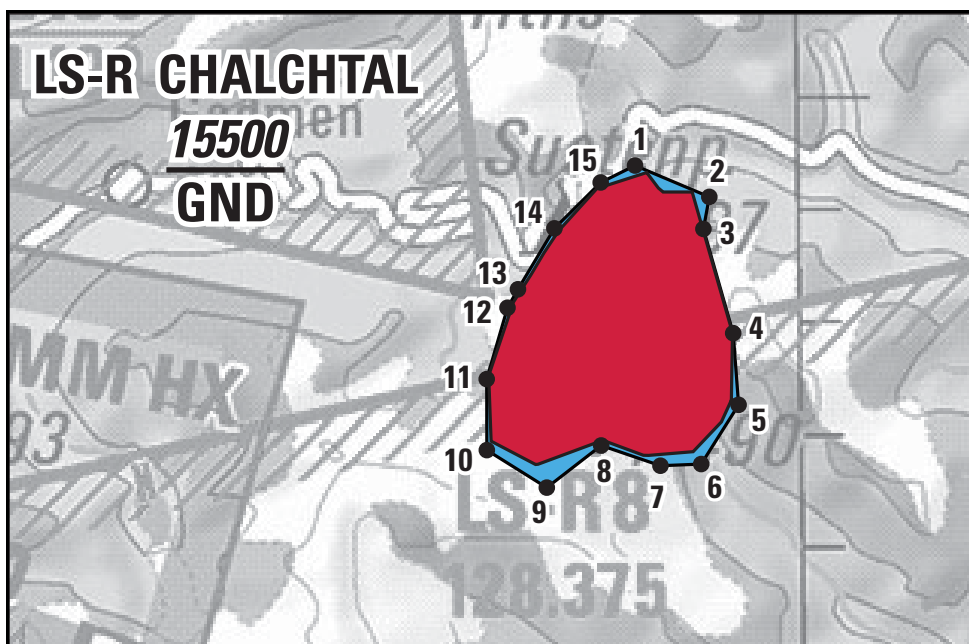
**Upper limit:** 10'500 ft AMSL (operations carried out up to FL100)

**Type of activity:** Firing event and MIL flying activity

**Lower limit 2 and 3:** 4'500 ft AMSL (operations carried out up to 5'000 ft AMSL)

**Frequency:** 25 days/year (Activations during the month of October up to and including May)

1.6 Chalchtal



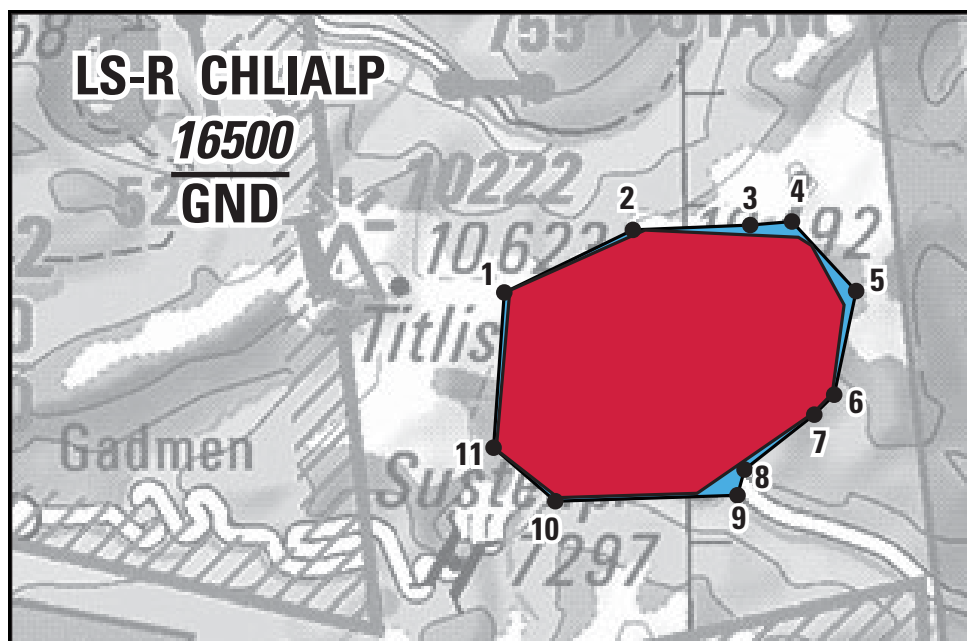
1	46 44 48.109 N	008 28 30.47 E
2	46 44 30.79 N	008 29 27.999 E
3	46 44 13.679 N	008 29 23.068 E
4	46 43 17.655 N	008 29 45.155 E
5	46 42 39.276 N	008 29 48.61 E
6	46 42 07.84 N	008 29 18.912 E
7	46 42 07.238 N	008 28 47.184 E
8	46 42 18.49 N	008 28 01.273 E
9	46 41 56.311 N	008 27 18.546 E
10	46 42 16.8 N	008 26 32.267 E
11	46 42 54.815 N	008 26 32.88 E
12	46 43 32.881 N	008 26 49.767 E
13	46 43 42.682 N	008 26 58.09 E
14	46 44 15.041 N	008 27 27.105 E
15	46 44 39.276 N	008 28 03.572 E
1	46 44 48.109 N	008 28 30.47 E

**Upper limit:** 15'500 ft AMSL (firing up to 4'500 m AMSL)

**Type of activity:** Firing activity

**Frequency:** 25 days/year

1.7 Chlialp



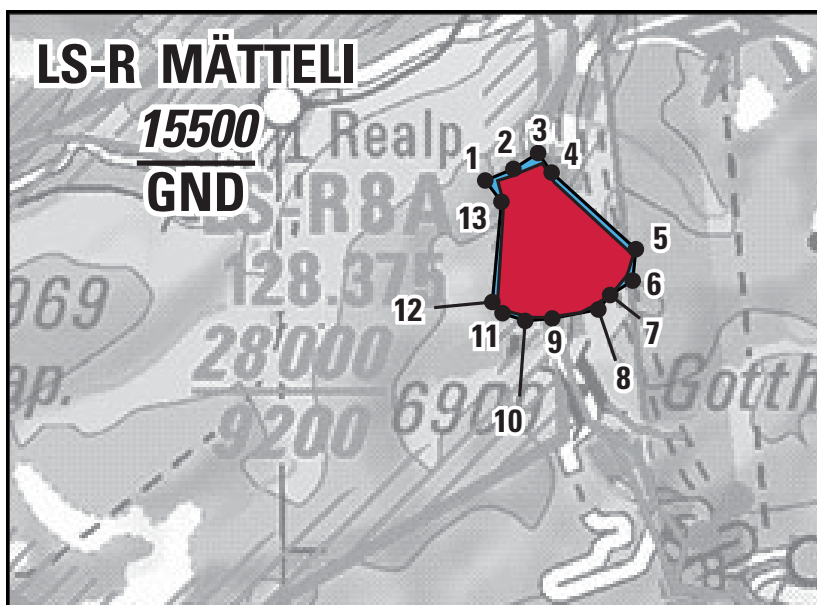
1	46 46 38.036 N	008 28 16.275 E
2	46 47 10.618 N	008 29 57.119 E
3	46 47 12.351 N	008 31 28.587 E
4	46 47 13.931 N	008 32 01.138 E
5	46 46 36.226 N	008 32 50.387 E
6	46 45 40.912 N	008 32 32.157 E
7	46 45 30.381 N	008 32 16.422 E
8	46 45 01.507 N	008 31 21.521 E
9	46 44 47.799 N	008 31 15.767 E
10	46 44 45.939 N	008 28 53.853 E
11	46 45 15.027 N	008 28 06.337 E
1	46 46 38.036 N	008 28 16.275 E

**Upper limit:** 16'500 ft AMSL (firing up to 5'000 m AMSL )

**Type of activity:** Firing activity

**Frequency:** 25 days/year

1.8 Mätteli



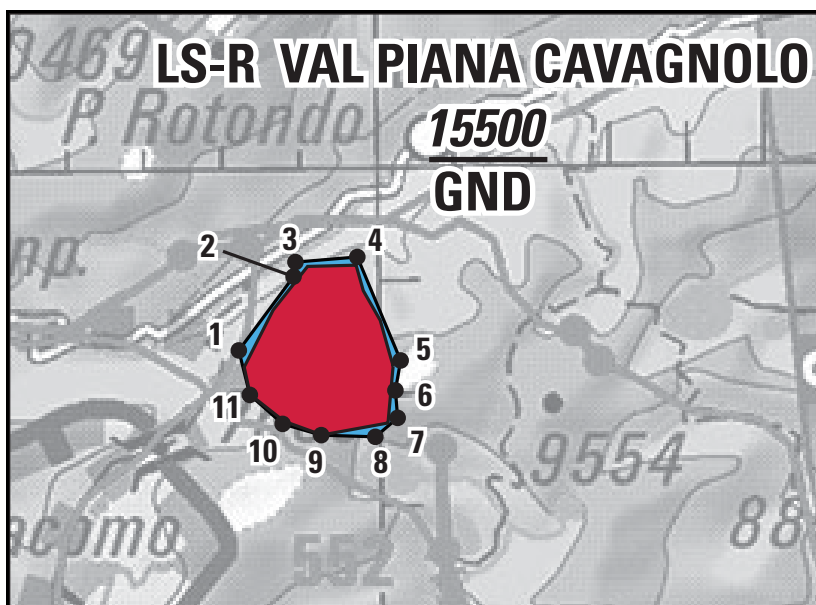
1	46 35 39.612 N	008 33 17.501 E
2	46 35 45.611 N	008 33 39.489 E
3	46 35 53.928 N	008 33 58.851 E
4	46 35 43.352 N	008 34 09.116 E
5	46 35 01.676 N	008 35 13.64 E
6	46 34 44.882 N	008 35 10.852 E
7	46 34 37.347 N	008 34 53.118 E
8	46 34 29.687 N	008 34 43.834 E
9	46 34 25.267 N	008 34 07.938 E
10	46 34 24.164 N	008 33 46.966 E
11	46 34 28.455 N	008 33 29.453 E
12	46 34 34.5 N	008 33 21.654 E
13	46 35 28.108 N	008 33 29.834 E
1	46 35 39.612 N	008 33 17.501 E

**Upper limit:** 15'500 ft AMSL (firing up to 4'500 m AMSL)

**Type of activity:** Firing activity

**Frequency:** 25 days/year (only in winter when the Gotthard Pass is closed)

1.9 Val Piana/Cavagnolo



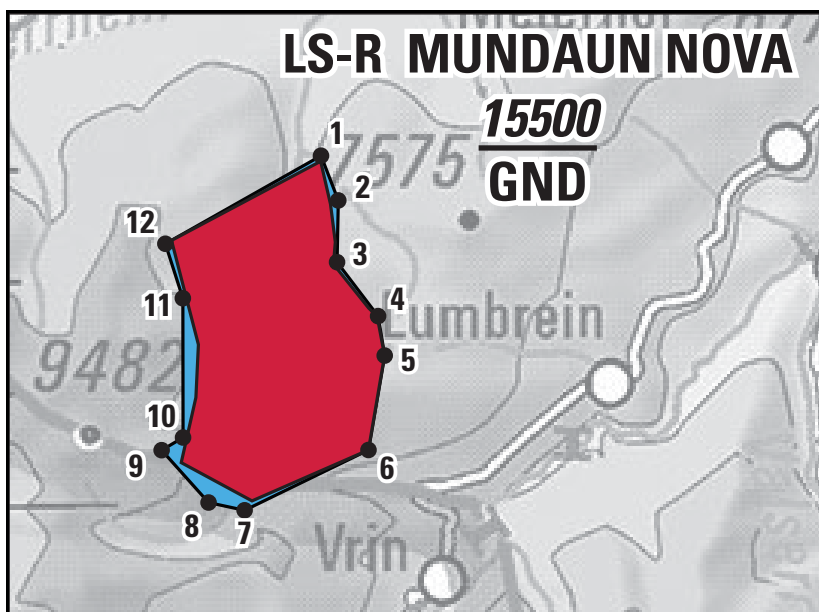
1	46 28 46.68 N	008 28 48.327 E
2	46 29 25.833 N	008 29 31.497 E
3	46 29 33.568 N	008 29 33.115 E
4	46 29 35.864 N	008 30 21.127 E
5	46 28 40.142 N	008 30 53.611 E
6	46 28 24.159 N	008 30 49.22 E
7	46 28 09.436 N	008 30 50.678 E
8	46 27 59.46 N	008 30 33.196 E
9	46 28 00.748 N	008 29 51.312 E
10	46 28 07.04 N	008 29 21.519 E
11	46 28 22.809 N	008 28 56.424 E
1	46 28 46.68 N	008 28 48.327 E

**Upper limit:** 15'500 ft AMSL (firing up to 4'500 m AMSL)

**Type of activity:** Firing activity

**Frequency:** 25 days/year

1.10 Mundaun/Nova



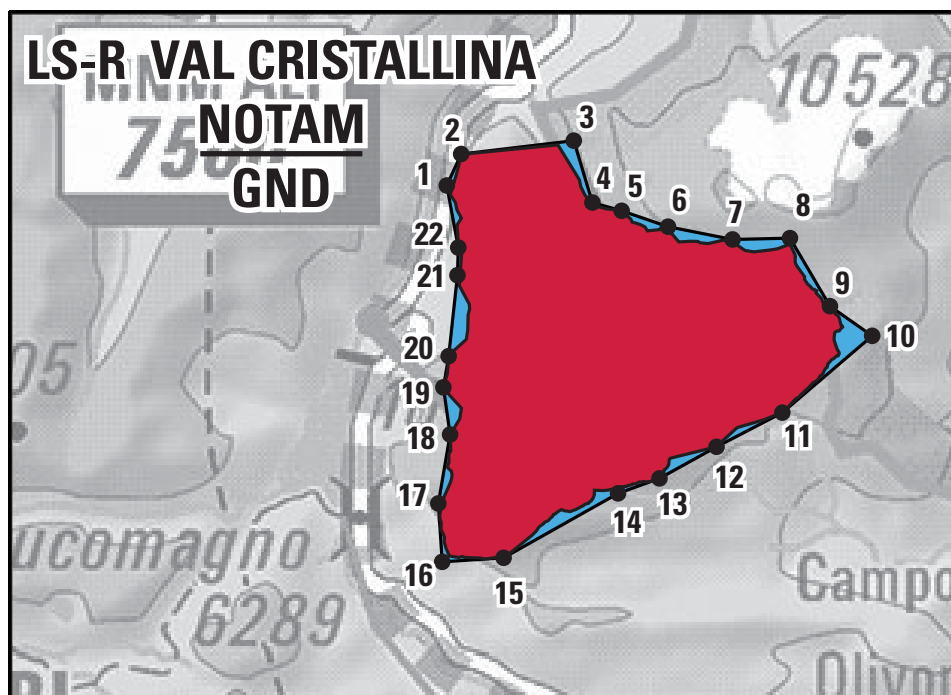
1	46 43 27.101 N	009 05 05.069 E
2	46 43 02.97 N	009 05 17.79 E
3	46 42 29.938 N	009 05 15.812 E
4	46 42 00.603 N	009 05 46.853 E
5	46 41 39.41 N	009 05 51.351 E
6	46 40 49.059 N	009 05 37.183 E
7	46 40 18.173 N	009 03 59.893 E
8	46 40 22.723 N	009 03 31.988 E
9	46 40 51.257 N	009 02 56.346 E
10	46 40 57.813 N	009 03 13.197 E
11	46 42 12.331 N	009 03 15.268 E
12	46 42 41.704 N	009 03 02.552 E
1	46 43 27.101 N	009 05 05.069 E

**Upper limit:** 15'500 ft AMSL (firing up to 4'500 m AMSL)

**Type of activity:** Firing activity

**Frequency:** 25 days/year

1.11 Val Cristallina



1	46 37 24.219 N	008 50 07.796 E
2	46 37 30.289 N	008 51 35.446 E
3	46 36 56.977 N	008 51 49.047 E
4	46 36 52.273 N	008 52 11.653 E
5	46 36 43.32 N	008 52 47.423 E
6	46 36 35.848 N	008 53 37.342 E
7	46 36 35.986 N	008 54 21.969 E
8	46 35 59.148 N	008 54 52.043 E
9	46 35 42.851 N	008 55 24.37 E
10	46 35 02.659 N	008 54 13.531 E
11	46 34 45.024 N	008 53 21.95 E
12	46 34 28.678 N	008 52 37.21 E

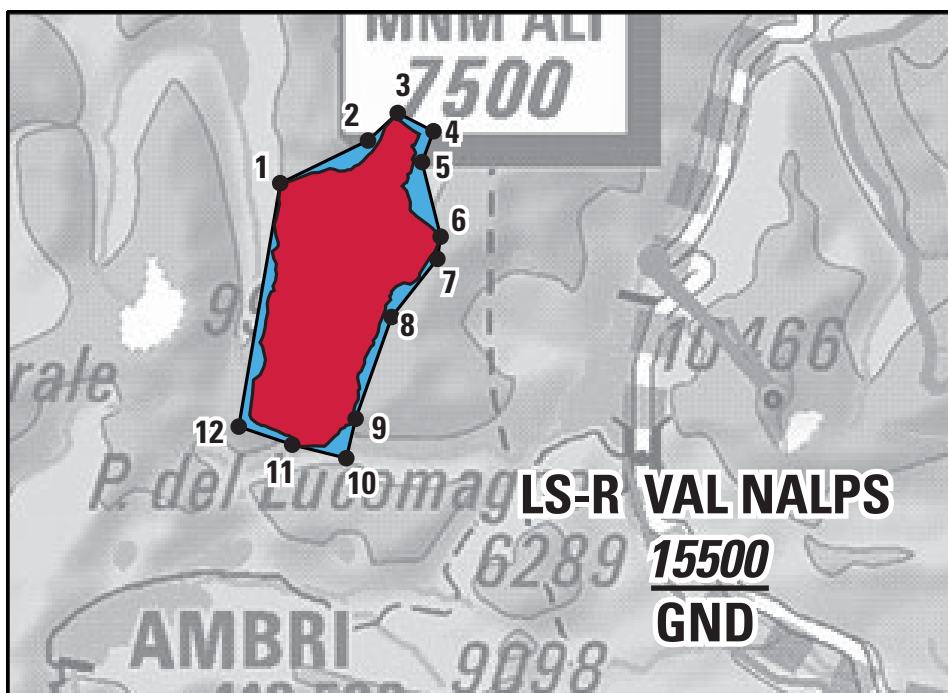
13	46 34 21.065 N	008 52 04.851 E
14	46 33 47.677 N	008 50 35.138 E
15	46 33 46.107 N	008 49 47.451 E
16	46 34 17.394 N	008 49 45.254 E
17	46 34 54.18 N	008 49 55.318 E
18	46 35 19.486 N	008 49 50.784 E
19	46 35 36.162 N	008 49 55.308 E
20	46 36 19.355 N	008 50 03.235 E
21	46 36 34.168 N	008 50 04.256 E
22	46 37 07.514 N	008 49 56.186 E
1	46 37 24.219 N	008 50 07.796 E

**Upper limit(s):** 25'500 ft AMSL (firing up to 7'500 m AMSL) /  
36'500 ft AMSL (firing up to 11'000 m AMSL)

**Type of activity:** Firing activity

**Frequency:** 40 days/year

1.12 Val Nalps



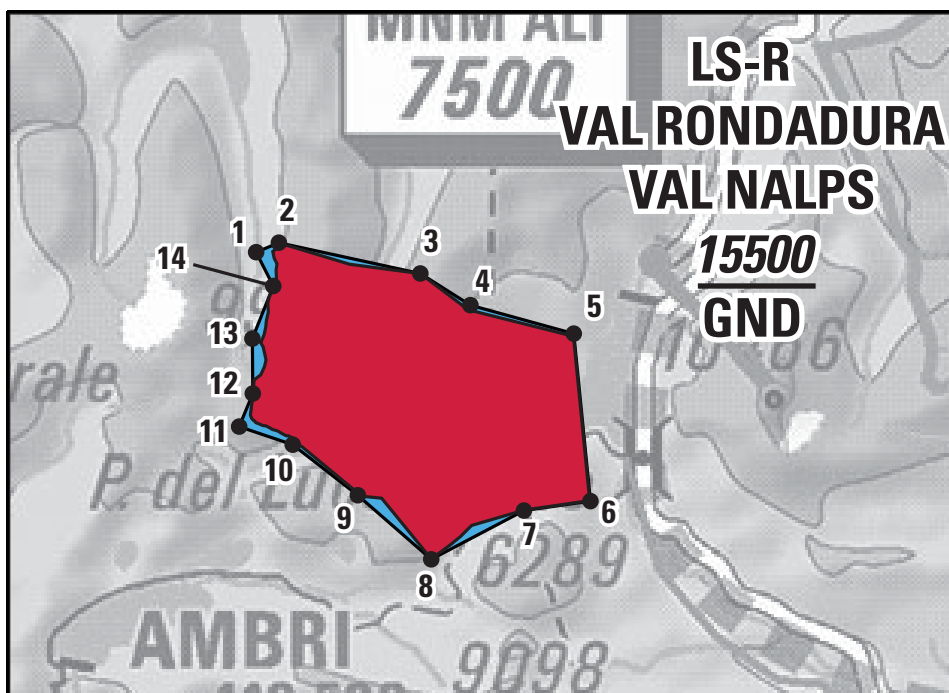
1	46 36 41.144 N	008 44 07.27 E
2	46 37 03.189 N	008 45 15.969 E
3	46 37 17.652 N	008 45 39.418 E
4	46 37 07.576 N	008 46 06.976 E
5	46 36 51.182 N	008 45 57.648 E
6	46 36 11.084 N	008 46 11.126 E
7	46 35 59.2 N	008 46 08.295 E
8	46 35 28.527 N	008 45 32.034 E
9	46 34 34.355 N	008 45 02.743 E
10	46 34 13.346 N	008 44 55.005 E
11	46 34 21.055 N	008 44 13.231 E
12	46 34 31.195 N	008 43 31.932 E
1	46 36 41.144 N	008 44 07.27 E

**Upper limit:** 15'500 ft AMSL (firing up to 4'500 m AMSL)

**Type of activity:** Firing activity

**Frequency:** 25 days/year

1.13 Val Rondadura/Val Nalps



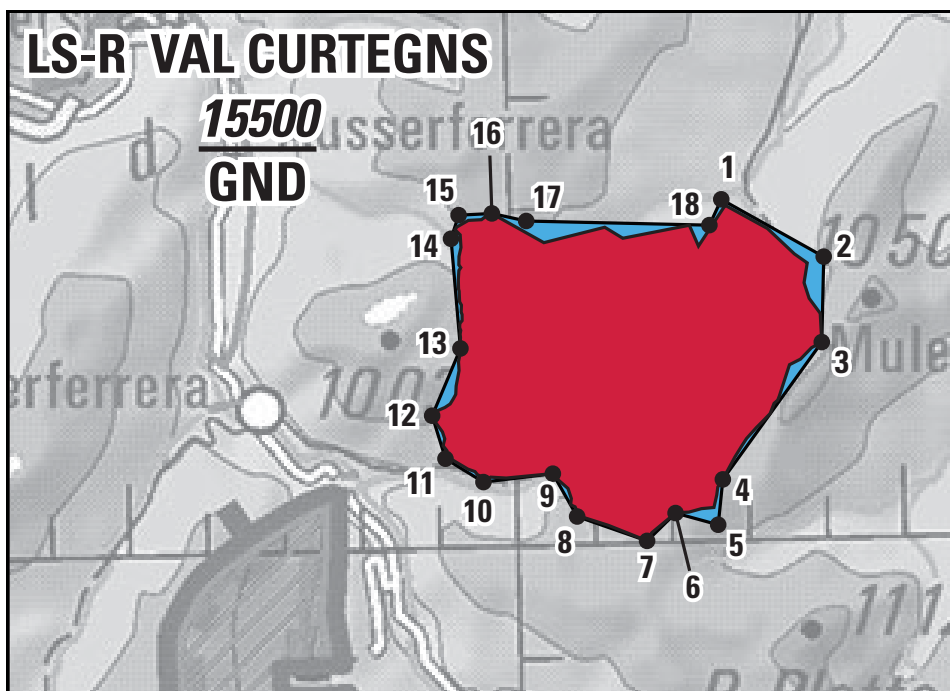
1	46 36 04.415 N	008 43 47.251 E
2	46 36 09.306 N	008 44 05.035 E
3	46 35 51.556 N	008 45 54.449 E
4	46 35 34.148 N	008 46 32.911 E
5	46 35 17.956 N	008 47 52.784 E
6	46 33 48.151 N	008 48 03.48 E
7	46 33 43.704 N	008 47 11.732 E
8	46 33 18.452 N	008 45 59.169 E
9	46 33 53.406 N	008 45 03.052 E
10	46 34 21.057 N	008 44 13.2 E
11	46 34 31.219 N	008 43 31.853 E
12	46 34 48.797 N	008 43 42.856 E
13	46 35 18.186 N	008 43 43.227 E
14	46 35 46.17 N	008 44 00.136 E
1	46 36 04.415 N	008 43 47.251 E

**Upper limit:** 15'500 ft AMSL (firing up to 4'500 m AMSL)

**Type of activity:** Firing activity

**Frequency:** 25 days/year

1.14 Val Curtegn's



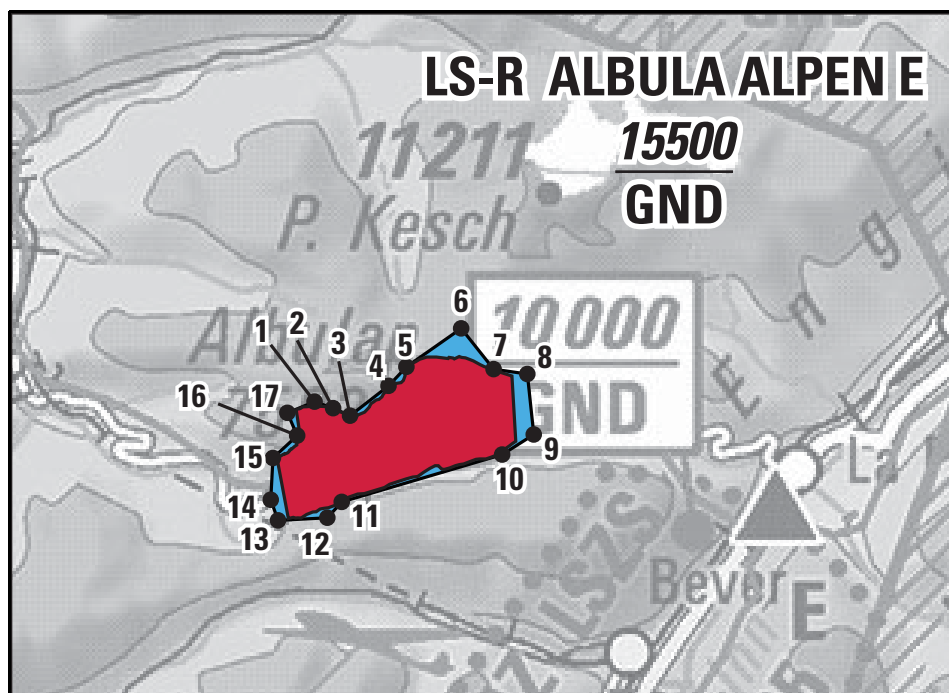
1	46 33 25.464 N	009 33 22.417 E
2	46 32 53.305 N	009 34 40.645 E
3	46 32 07.615 N	009 34 37.35 E
4	46 30 55.566 N	009 33 17.778 E
5	46 30 31.366 N	009 33 13.22 E
6	46 30 38.232 N	009 32 40.425 E
7	46 30 23.746 N	009 32 17.771 E
8	46 30 37.788 N	009 31 24.09 E
9	46 31 01.056 N	009 31 06.136 E
10	46 30 57.536 N	009 30 12.159 E
11	46 31 10.579 N	009 29 43.203 E
12	46 31 33.774 N	009 29 33.754 E
13	46 32 09.374 N	009 29 57.047 E
14	46 33 08.215 N	009 29 51.968 E
15	46 33 20.729 N	009 29 58.367 E
16	46 33 21.195 N	009 30 24.196 E
17	46 33 16.664 N	009 30 50.667 E
18	46 33 11.828 N	009 33 12.651 E
1	46 33 25.464 N	009 33 22.417 E

**Upper limit:** 15'500 ft AMSL (firing up to 4'500 m AMSL)

**Type of activity:** Firing activity

**Frequency:** 25 days/year

1.15 Albula Alpen E



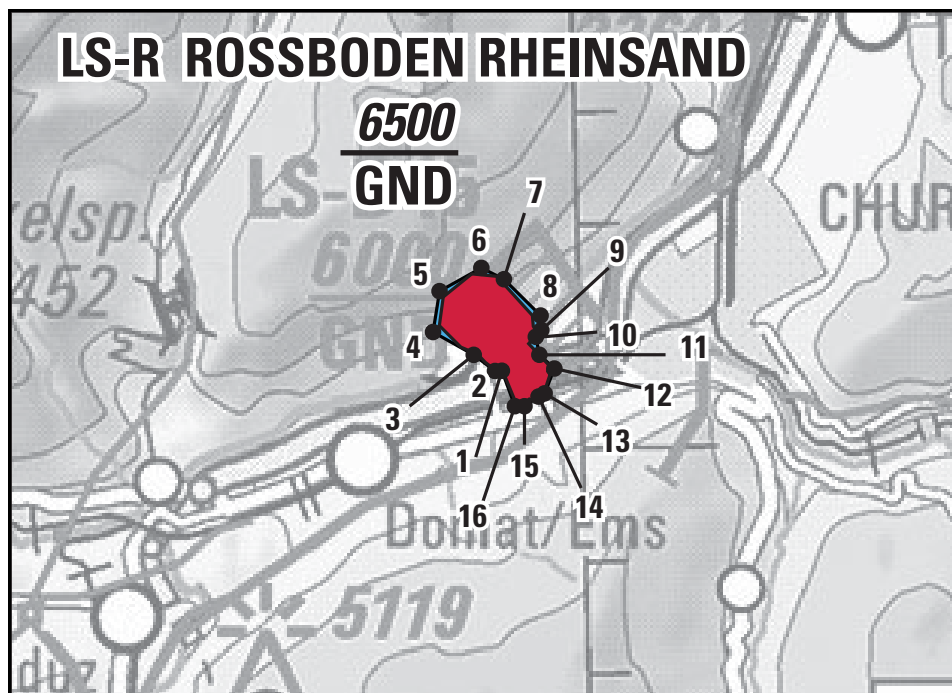
1	46 35 50.854 N	009 49 56.856 E
2	46 35 47.063 N	009 50 11.115 E
3	46 35 42.771 N	009 50 24.086 E
4	46 35 58.121 N	009 50 54.642 E
5	46 36 07.989 N	009 51 08.964 E
6	46 36 27.652 N	009 51 52.403 E
7	46 36 05.313 N	009 52 16.593 E
8	46 36 02.146 N	009 52 42.657 E
9	46 35 29.667 N	009 52 46.176 E
10	46 35 19.455 N	009 52 21.182 E
11	46 34 56.769 N	009 50 15.575 E
12	46 34 48.536 N	009 50 04.016 E
13	46 34 47.929 N	009 49 25.703 E
14	46 34 59.075 N	009 49 20.513 E
15	46 35 21.392 N	009 49 23.218 E
16	46 35 32.979 N	009 49 42.551 E
17	46 35 45.327 N	009 49 35.502 E
1	46 35 50.854 N	009 49 56.856 E

**Upper limit:** 15'500 ft AMSL (firing up to 4'500 m AMSL)

**Type of activity:** Firing activity

**Frequency:** 25 days/year

1.16 Rossboden/Rheinsand



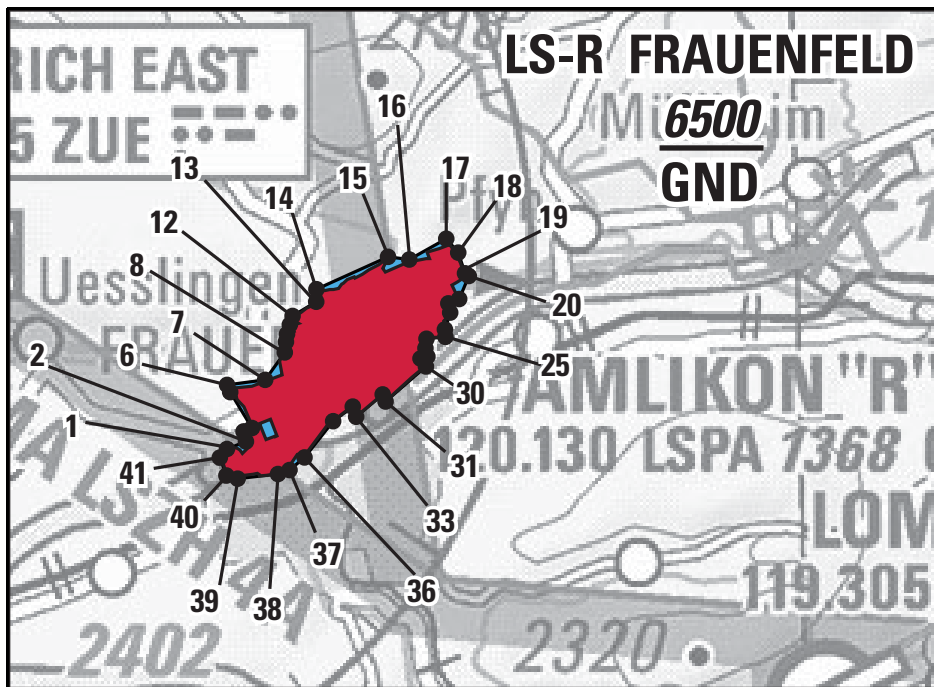
1	46 51 05.888 N	009 29 35.844 E
2	46 51 05.849 N	009 29 30.477 E
3	46 51 14.795 N	009 29 14.223 E
4	46 51 27.566 N	009 28 42.937 E
5	46 51 49.368 N	009 28 48.851 E
6	46 52 01.236 N	009 29 21.938 E
7	46 51 54.852 N	009 29 39.333 E
8	46 51 34.889 N	009 30 07.19' E
9	46 51 27.069 N	009 30 07.418 E
10	46 51 23.591 N	009 30 03.024 E
11	46 51 13.919 N	009 30 05.428 E
12	46 51 06.328 N	009 30 16.827 E
13	46 50 53.176 N	009 30 08.694 E
14	46 50 51.552 N	009 30 03.901 E
15	46 50 46.582 N	009 29 52.757 E
16	46 50 46.739 N	009 29 45.267 E
1	46 51 05.888 N	009 29 35.844 E

**Upper limit:** 6'500 ft AMSL (firing up to 1'800 m AMSL)

**Type of activity:** Firing activity

**Frequency:** 25 days/year

1.17 Frauenfeld



1	47 34 12.255 N	008 53 04.933 E
2	47 34 16.051 N	008 53 20.054 E
3	47 34 21.447 N	008 53 18.33 E
4	47 34 23.217 N	008 53 25.02 E
5	47 34 42.639 N	008 53 08.341 E
6	47 34 46.53 N	008 53 05.981 E
7	47 34 48.871 N	008 53 36.154 E
8	47 35 03.344 N	008 53 52.085 E
9	47 35 08.983 N	008 53 53.154 E
10	47 35 13.141 N	008 53 54.135 E
11	47 35 18.131 N	008 53 56.487 E
12	47 35 22.782 N	008 53 58.784 E
13	47 35 30.142 N	008 54 17.698 E
14	47 35 36.857 N	008 54 18.043 E
15	47 35 53.46 N	008 55 15.155 E
16	47 35 51.809 N	008 55 31.938 E
17	47 36 02.565 N	008 56 01.492 E
18	47 35 55.001 N	008 56 10.744 E
19	47 35 43.865 N	008 56 15.795 E
20	47 35 42.391 N	008 56 18.745 E
21	47 35 30.16 N	008 56 10.796 E

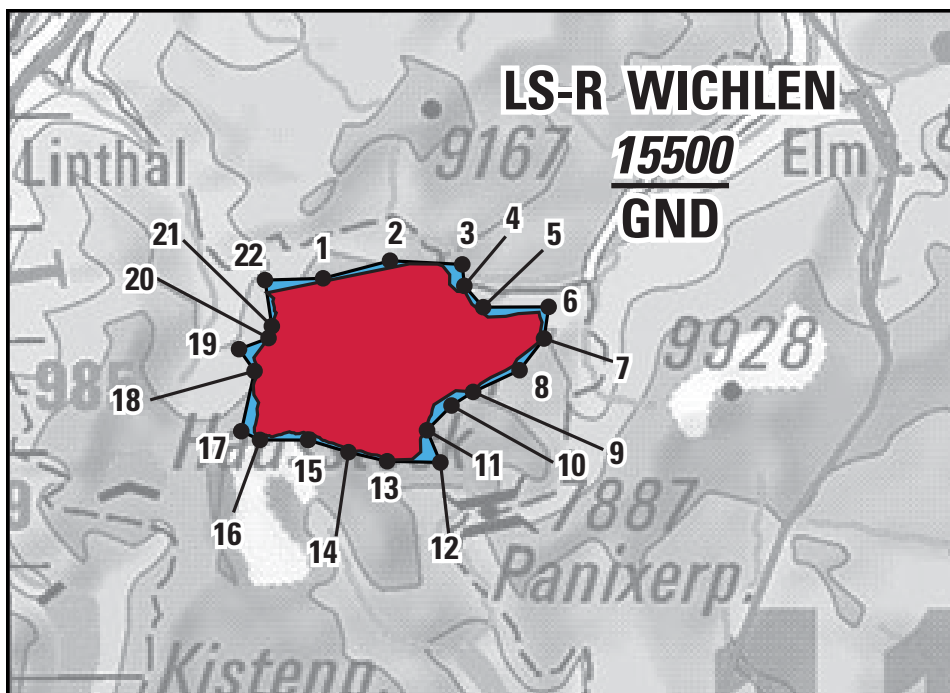
22	47 35 27.94 N	008 56 02.166 E
23	47 35 22.984 N	008 56 03.482 E
24	47 35 14.029 N	008 55 59.051 E
25	47 35 10.048 N	008 55 59.35 E
26	47 35 09.229 N	008 55 44.34 E
27	47 35 04.214 N	008 55 43.383 E
28	47 34 59.725 N	008 55 44.78 E
29	47 34 58.721 N	008 55 39.313 E
30	47 34 54.42 N	008 55 43.484 E
31	47 34 36.054 N	008 55 11.053 E
32	47 34 39.893 N	008 55 08.886 E
33	47 34 28.21 N	008 54 47.579 E
34	47 34 33.679 N	008 54 45.037 E
35	47 34 26.064 N	008 54 29.305 E
36	47 34 06.957 N	008 54 06.137 E
37	47 34 00.344 N	008 53 54.088 E
38	47 33 58.339 N	008 53 44.933 E
39	47 33 56.253 N	008 53 12.973 E
40	47 33 58.052 N	008 53 04.122 E
41	47 34 07.71 N	008 52 59.181 E
1	47 34 12.255 N	008 53 04.933 E

**Upper limit:** 6'500 ft AMSL (firing up to 1'700 m AMSL)

**Type of activity:** Firing activity

**Frequency:** 80 x 0.5 days

1.18 Wichlen



1	46 53 53.245 N	009 04 48.158 E
2	46 54 01.918 N	009 05 40.701 E
3	46 53 59.116 N	009 06 37.041 E
4	46 53 47.625 N	009 06 38.3 E
5	46 53 35.992 N	009 06 52.645 E
6	46 53 35.403 N	009 07 43.765 E
7	46 53 18.487 N	009 07 39.607 E
8	46 53 01.811 N	009 07 19.991 E
9	46 52 50.746 N	009 06 43.391 E
10	46 52 43.697 N	009 06 26.279 E
11	46 52 30.752 N	009 06 06.75 E
12	46 52 13.377 N	009 06 16.683 E

13	46 52 14.604 N	009 05 35.157 E
14	46 52 19.902 N	009 05 05.14 E
15	46 52 26.837 N	009 04 33.812 E
16	46 52 27.452 N	009 03 56.285 E
17	46 52 32.297 N	009 03 41.802 E
18	46 53 04.353 N	009 03 53.16 E
19	46 53 16.262 N	009 03 41.369 E
20	46 53 21.87 N	009 04 04.59 E
21	46 53 28.183 N	009 04 07.371 E
22	46 53 52.935 N	009 04 02.759 E
1	46 53 53.245 N	009 04 48.158 E

**Upper limit:** 15'500 ft AMSL (firing up to 4'500 m AMSL)

**Type of activity:** Firing activity

**Frequency:** 200 days/year

## 2. LS-R14 Säntis - Use by the Swiss Armed Forces' mini-drones

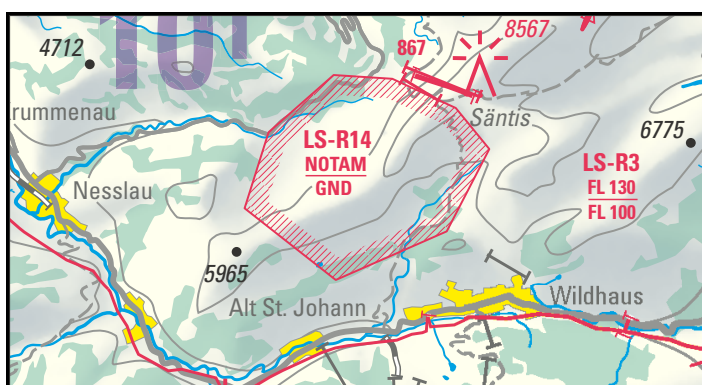
In future, the LS-R14 Säntis (decided by FOCA on 25 January 2022) will be used not only for firing exercises, but also for exercises with the Swiss Armed Forces' mini-drones or a combination of both (as with the LS-R7 Hongrin, for example). In Eastern Switzerland, the Säntisalpen/Toggenburg firing range is the only site for exercises with the Armed Forces' mini-drones. Accordingly, it is important for the Swiss Armed Forces to be able to fall back on this option, in addition to the firing ranges already used for mini-drones in Switzerland.

The use of mini-drones is included in the contingent of the maximum possible activation days and the maximum possible upper limit; the dimensions of the existing restricted area LS-R14 Säntis also remains unchanged. All interested parties were informed about this at the site by the Swiss Armed Forces on 15 March 2022 and the facts they received at that time are still valid.

Lower limit: GND

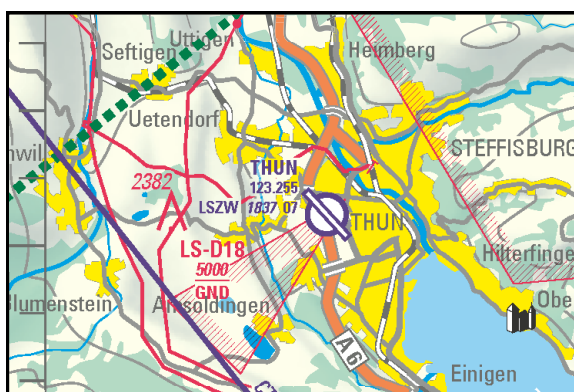
Max. upper limit: 12'500 ft AMSL

Activation days: max. 110 (general ban due to alpine farming in place from 15 May up to and including the Swiss Federal Day of Prayer / Bettag).



## 3. LS-D18 Thun - Cancelled

The LS-D18 Thun is no longer required by the military and will be cancelled and removed from all aviation publications as of 23 March 2023.



- E N D -

BAZL/SILR

---

THIS PAGE INTENTIONALLY LEFT BLANK