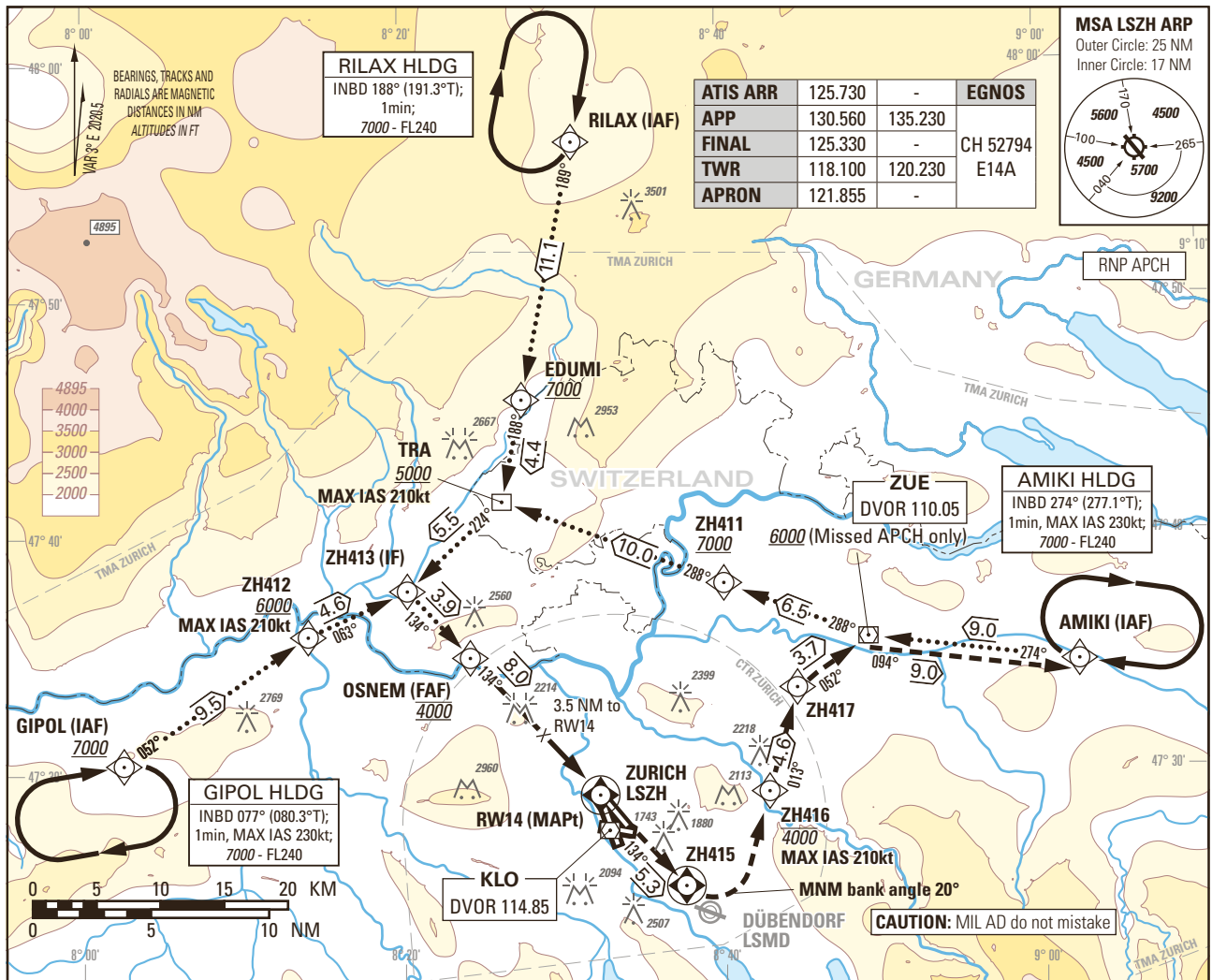


Instrument Approach Chart  
(IAC) - ICAO

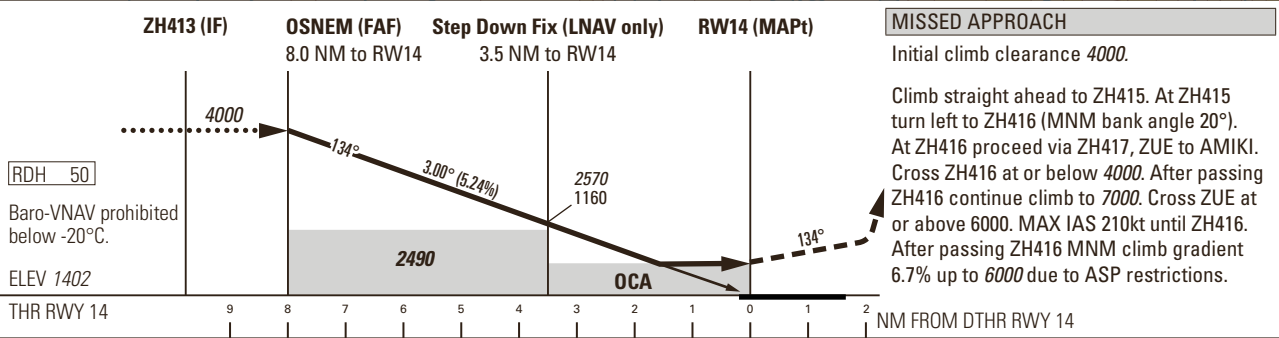
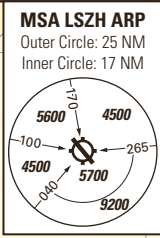
AD ELEV 1417ft

TRANSITION LEVEL by ATC  
TRANSITION ALTITUDE 7000

ZURICH LSZH  
RNP RWY 14



|          |         |         |          |
|----------|---------|---------|----------|
| ATIS ARR | 125.730 | -       | EGNOS    |
| APP      | 130.560 | 135.230 | CH 52794 |
| FINAL    | 125.330 | -       | E14A     |
| TWR      | 118.100 | 120.230 |          |
| APRON    | 121.855 | -       |          |



|                                      |           |            |            |            |            |      |      |      |      |
|--------------------------------------|-----------|------------|------------|------------|------------|------|------|------|------|
| OBSTACLE CLEARANCE ALTITUDE (HEIGHT) |           | A          | B          | C          | D          |      |      |      |      |
| STRAIGHT-IN                          | LNAV      | 2010 (610) |            |            |            |      |      |      |      |
|                                      | LNAV/VNAV | 1880 (480) | 1890 (490) | 1910 (510) | 1940 (540) |      |      |      |      |
|                                      | LPV CAT I | 1553 (151) | 1562 (160) | 1573 (171) | 1586 (184) |      |      |      |      |
| DECISION ALTITUDE (HEIGHT)           |           | A          | B          | C          | D          |      |      |      |      |
| STRAIGHT-IN                          | LPV CAT I | 1602 (200) |            |            |            |      |      |      |      |
| DIST THR                             |           | 8          | 7          | 6          | 5          | 4    | 3    | 2    | 1    |
| recommended CROSSING ALT             |           | 4000       | 3680       | 3360       | 3040       | 2730 | 2410 | 2090 | 1770 |
| recommended CROSSING HGT             |           | 2600       | 2280       | 1960       | 1640       | 1320 | 1000 | 690  | 370  |

|     |        |     |     |     |     |
|-----|--------|-----|-----|-----|-----|
| ROD | GS kt  | 90  | 110 | 130 | 150 |
|     | FT/MIN | 478 | 584 | 690 | 796 |

**CAUTION**  
From 1.0 NM before THR 14 Visual Segment Surface (VSS) penetrated by trees up to 1600ft AMSL (LNAV & LNAV/VNAV only).

COR: Completely revised (WEF 02DEC2021)

Input data

|                                     |               |
|-------------------------------------|---------------|
| Operation Type                      | 0             |
| SBAS Provider                       | 1 (EGNOS)     |
| Airport Identifier                  | LSZH          |
| Runway                              | 14            |
| Runway Letter                       | 0 (None)      |
| Approach Performance Designator     | 0             |
| Route Indicator                     |               |
| Reference Path Data Selector        | 0             |
| Reference Path Identifier           | E14A          |
| LTP/FTP Latitude                    | 472855.5305N  |
| LTP/FTP Longitude                   | 0083209.8680E |
| LTP/FTP Ellipsoidal Height (metres) | 474.7         |
| FPAP Latitude                       | 472740.6480N  |
| Delta FPAP Latitude (seconds)       | -74.8825      |
| FPAP Longitude                      | 0083352.0595E |
| Delta FPAP Longitude (seconds)      | 102.1915      |
| Threshold Crossing Height           | 15.0          |
| TCH Units Selector                  | 1 (meters)    |
| Glidepath Angle (degrees)           | 3.00          |
| Course Width (metres)               | 105.00        |
| Length Offset (metres)              | 0             |
| HAL (metres)                        | 40.0          |
| VAL (metres)                        | 35.0          |

Output data

|                      |  |
|----------------------|--|
| Data Block           | 10 08 1A 13 0C 0E 00 00 01 34<br>31 05 D5 89 60 14 18 CD A9 03<br>8B 26 FB B6 FD 5F 1E 03 2C 81<br>2C 01 64 00 C8 AF 60 6A BC CE |
| Calculated CRC Value | 606ABCCE   |
| Supplied CRC Value   | 606ABCCE   |
| Comparison Result    | OK   |