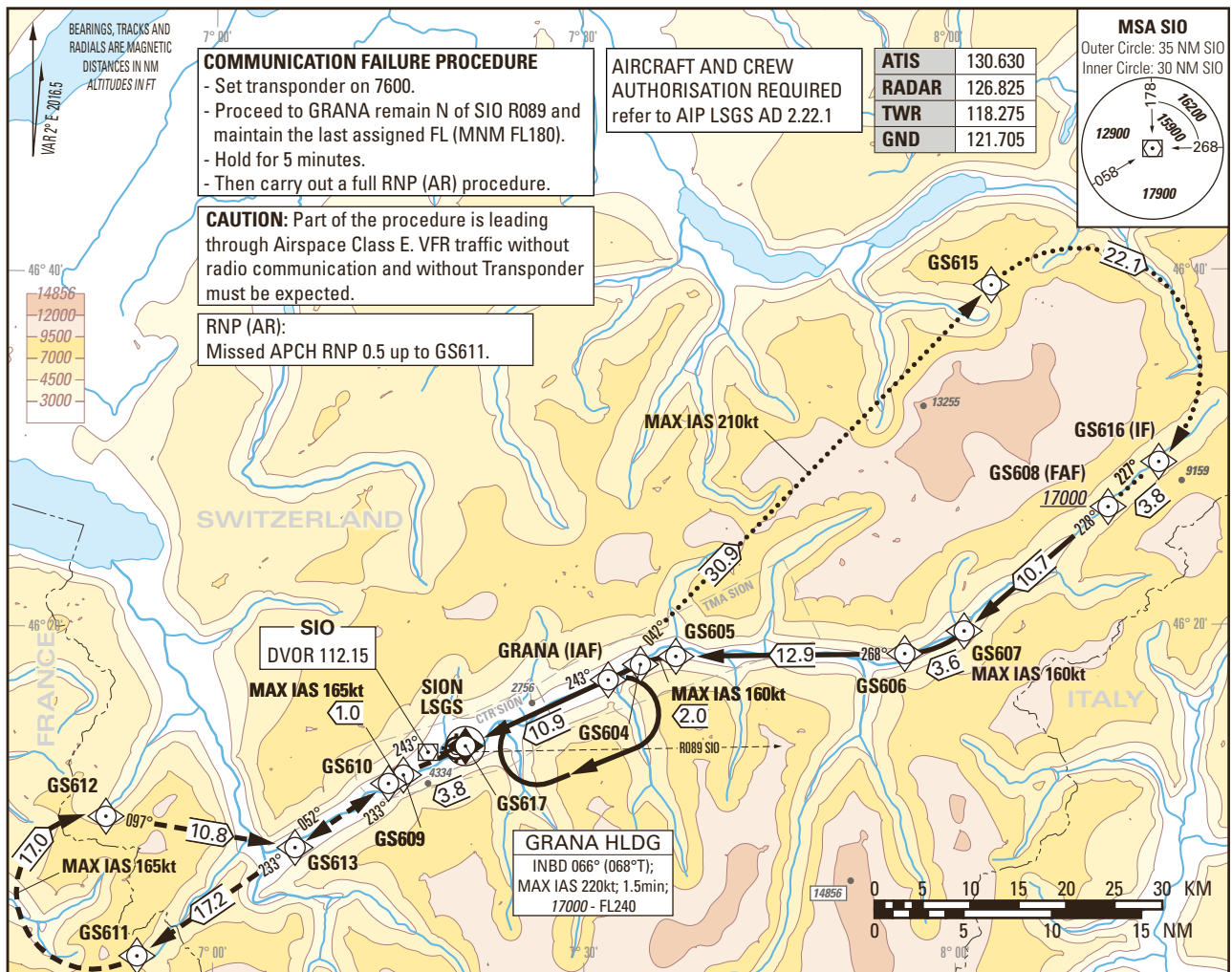


Instrument Approach Chart
(IAC) - ICAO

AD ELEV 1582ft

TRANSITION LEVEL by ATC
TRANSITION ALTITUDE 17000

SION LSGS
RNP RWY 25 (AR)
OFFSET 8° RIGHT
ACFT CAT A/B/C



THIS PAGE INTENTIONALLY LEFT BLANK