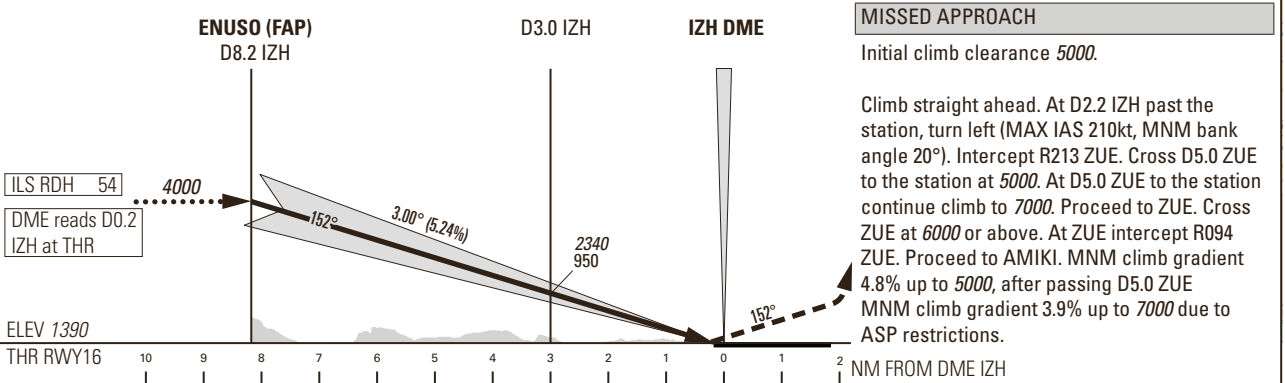
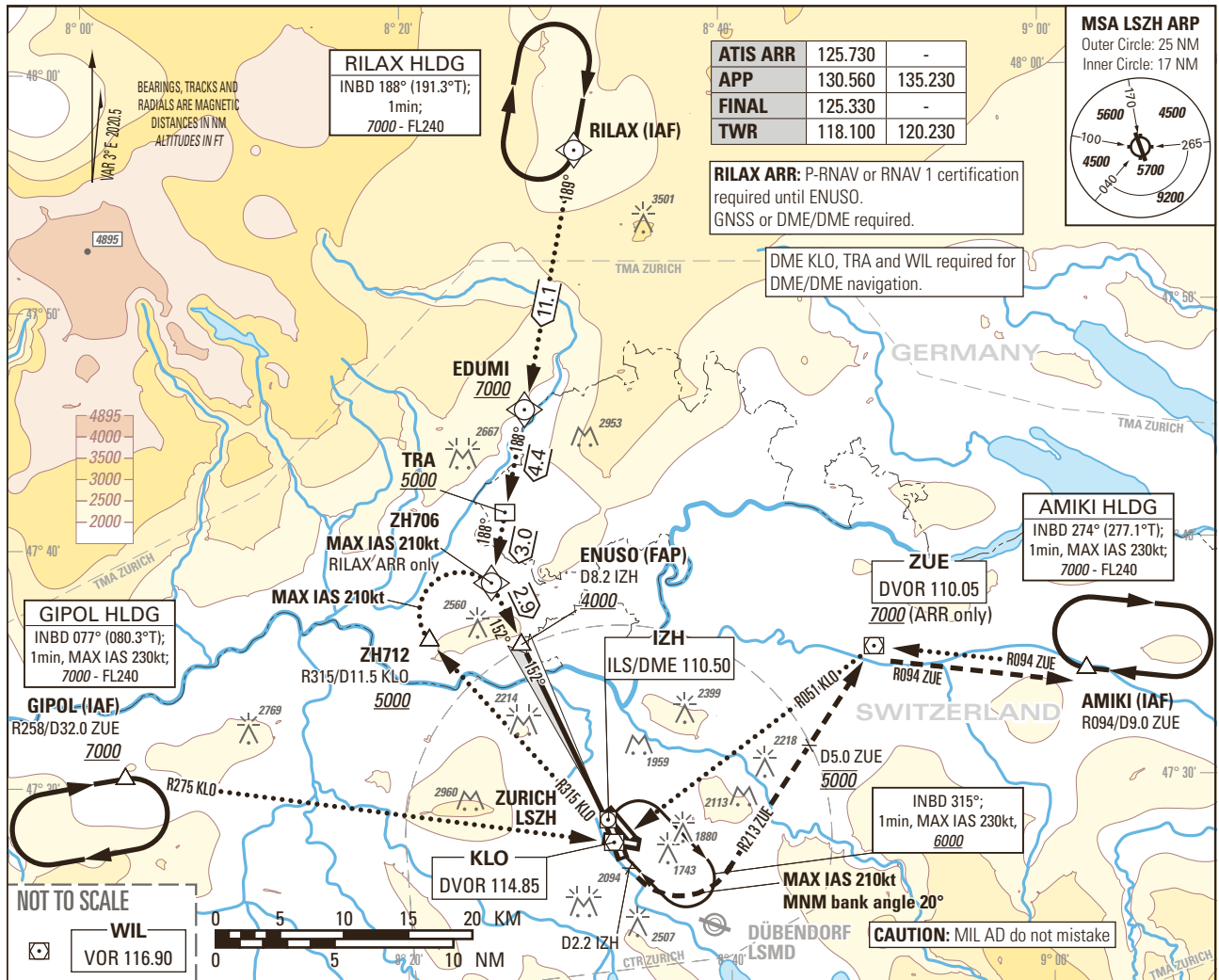


Instrument Approach Chart  
(IAC) - ICAO

AD ELEV 1417ft

TRANSITION LEVEL by ATC  
TRANSITION ALTITUDE 7000

ZURICH LSZH  
ILS RWY 16  
CAT II & III



OBSTACLE CLEARANCE ALTITUDE (HEIGHT)		M/A climb gradient	A	B	C	D	D <sub>L</sub>
CAT	altimeter						
CAT I	pressure altimeter	2.5%	1803 (413)	1813 (423)	1823 (433)	1832 (442)	
CAT I	pressure altimeter		1546 (156)	1556 (166)	1566 (176)	1579 (189)	
CAT II	radio altimeter	4.0% to 2300	1446 (56)	1457 (67)	1470 (80)	1488 (98)	
	radio altimeter and autopilot					1487 (97)	
DECISION ALTITUDE (HEIGHT) <sup>1)</sup>							
CAT I	pressure altimeter	2.5%	1803 (413)	1813 (423)	1823 (433)	1832 (442)	
CAT I	pressure altimeter		1590 (200)				
CAT II	radio altimeter and autopilot	4.0% to 2300	1490 (100)				

ROD	GS kt	90	110	130	150
	FT/MIN	478	584	690	796

**NOTE**  
<sup>1)</sup> Radio altimeter reading at CAT I DH 187ft, at CAT II DH 93ft, for lower minima PPR FOCA.  
- Due to GP signal disturbance RWY16, PIC might be REQ by ATC to change APCH Type to LOC or VIS APCH, MET permitting.

COR: Completely revised (WEF 02DEC2021)

THIS PAGE INTENTIONALLY LEFT BLANK