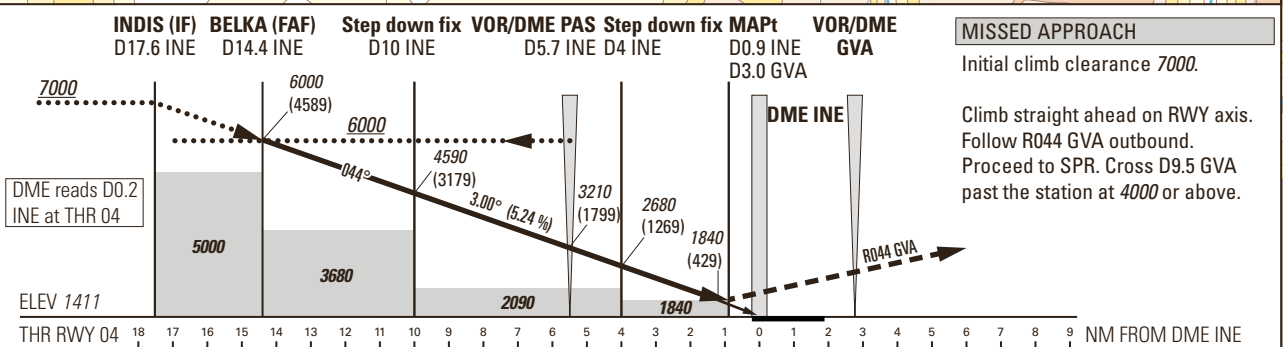
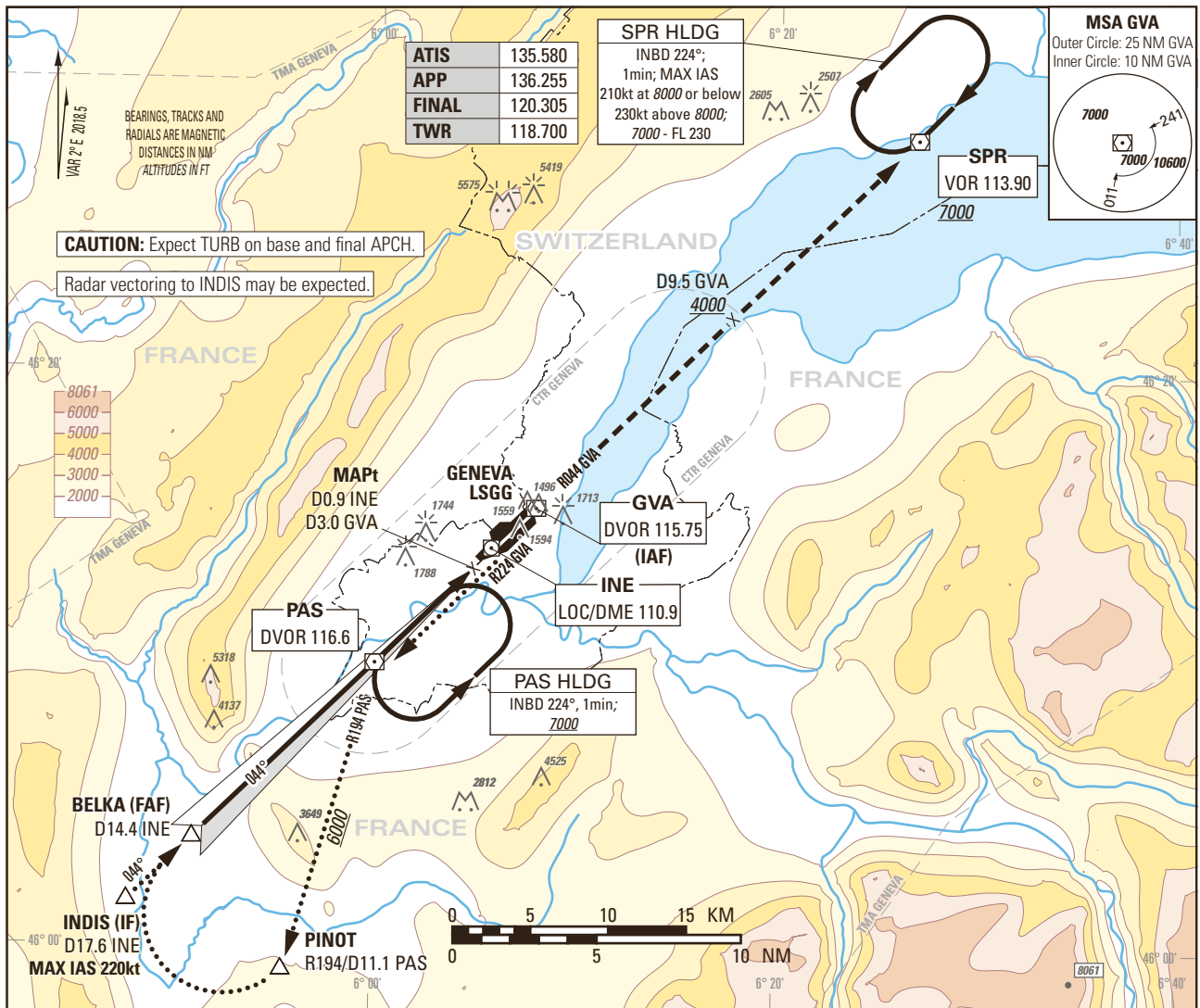


Instrument Approach Chart  
(IAC) - ICAO

AD ELEV 1411ft

TRANSITION LEVEL by ATC  
TRANSITION ALTITUDE 7000

GENEVA LSGG  
LOC RWY 04



OBSTACLE CLEARANCE ALTITUDE (HEIGHT)	A	B	C	D
Straight-in approach	1840 (429)			
Circling <sup>1)2)</sup>	2100 (690)		2400 (990)	

ROD	GS kt	90	110	130	150
	FT/MIN	478	584	690	796

**NOTE**  
<sup>1)</sup> Circling on request of ATC under special conditions and north of RWY only, speed and radius for category D as for category C aircraft.  
<sup>2)</sup> Circling must remain inside CTR at all times.

DIST DME INE	16	14	12	10	8	6	4	2
recommended crossing ALTITUDE (HEIGHT)	6510 (5099)	5870 (4459)	5230 (3819)	4590 (3179)	3960 (2549)	3320 (1909)	2680 (1269)	2050 (639)

COR: MSA (WEF 28MAR2019)

THIS PAGE INTENTIONALLY LEFT BLANK