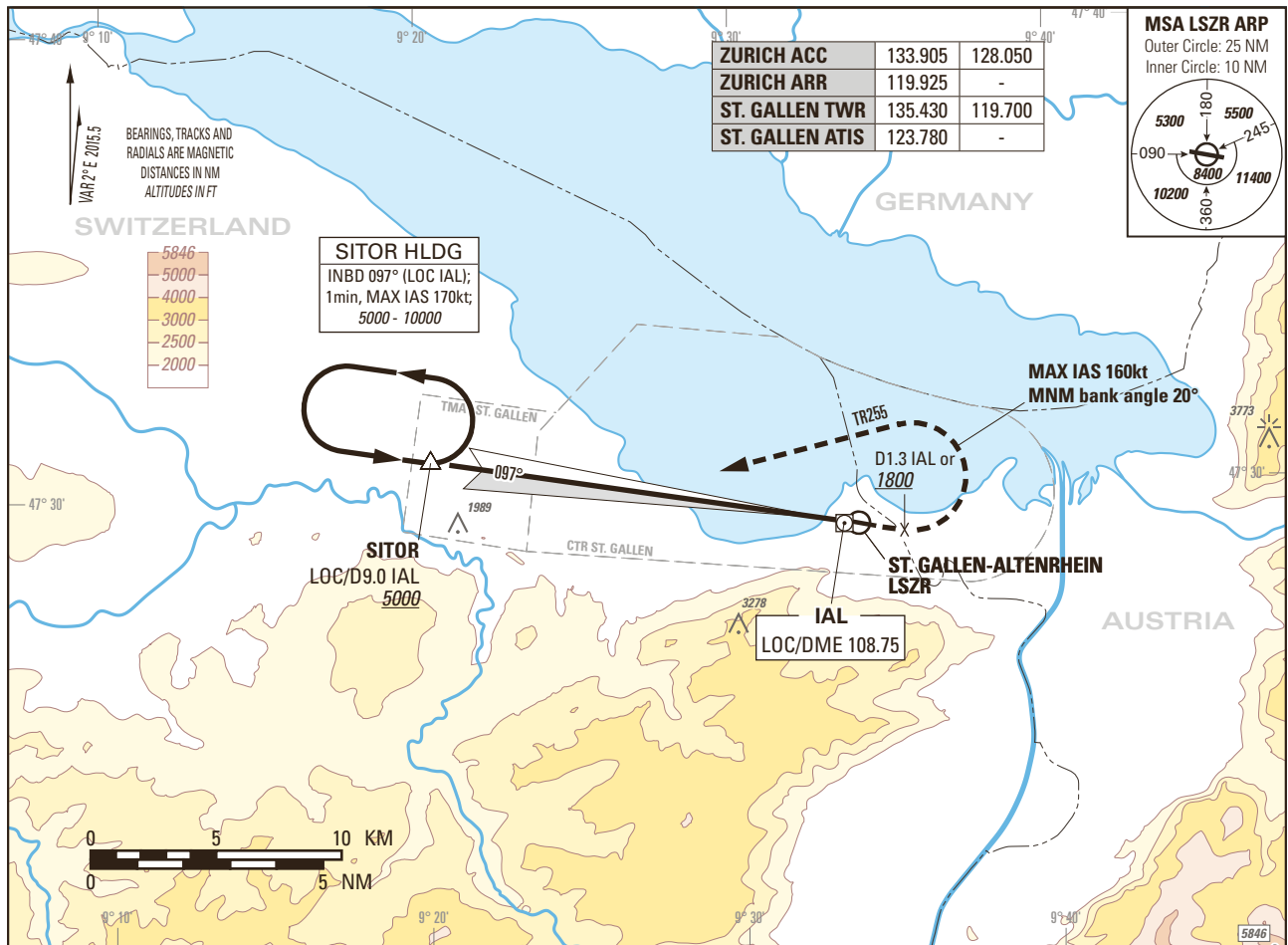


Instrument Approach Chart
(IAC) - ICAO

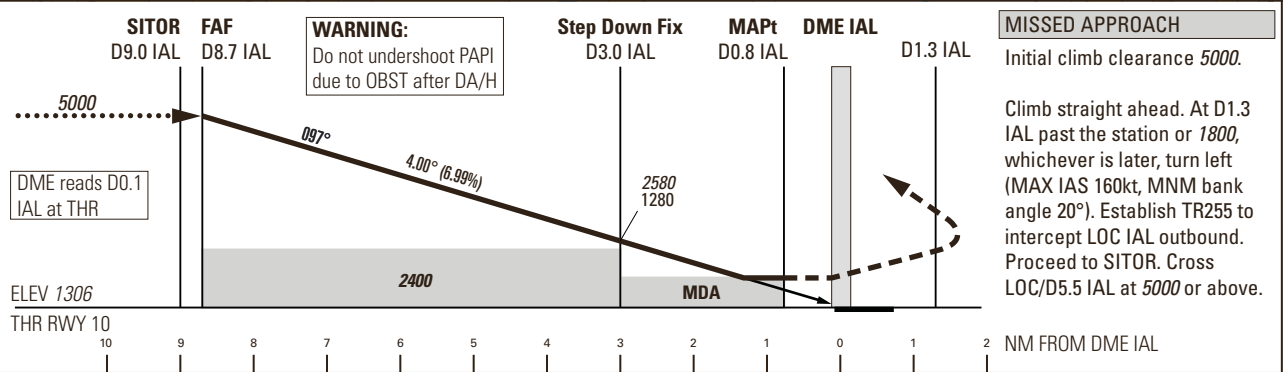
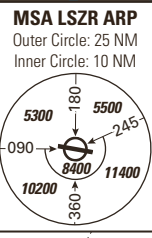
AD ELEV 1306ft

TRANSITION LEVEL by ATC
TRANSITION ALTITUDE 5000

ST. GALLEN-ALTENRHEIN LSZR
LOC RWY 10, 0.8° OFFSET LEFT
ACFT CAT A/B/C



ZURICH ACC	133.905	128.050
ZURICH ARR	119.925	-
ST. GALLEN TWR	135.430	119.700
ST. GALLEN ATIS	123.780	-



OBSTACLE CLEARANCE ALTITUDE (HEIGHT) / OCA (H)	A	B	C
STRAIGHT-IN APPROACH	1720 (420)		
CIRCLING ^{1) 3)}	2170 (870)		2270 (970 ²⁾)
MINIMUM DESCENT ALTITUDE (HEIGHT) / MDA(H)	A	B	C
STRAIGHT-IN APPROACH	1806 (500)		

ROD	GS kt	80	100	120	140	160	180
	FT/MIN	567	708	849	991	1133	1274

NOTE
¹⁾ Circling north of AP only.
²⁾ MAX IAS 160kt due to airspace.
³⁾ Remain within CTR.

REMARK
 - Obstacle limitation and restriction according to non-instrument RWY criteria.

CAUTION
 - 0.2 NM before THR 10 Visual Segment Surface (VSS) penetrated by trees up to 1380ft.
 - This is not a standard approach angle.

DME IAL	8.7	8	7	6	5	4	3	2	1
DIST THR	8.6	7.9	6.9	5.9	4.9	3.9	2.9	1.9	0.9
ALT FT	5000	4710	4280	3860	3430	3010	2580	2160	1730

COR: REMARK (WEF 03DEC2020)

THIS PAGE INTENTIONALLY LEFT BLANK