

STANDARD INSTRUMENT ARRIVAL CHART  
(STAR) - ICAO

TRANSITION LEVEL by ATC  
TRANSITION ALTITUDE 7000

GENEVA LSGG  
STAR RWY 04 - RNAV  
BENOT - ULMES

**COMMUNICATION FAILURE PROCEDURE:**

- Set transponder on code 7600.
- Proceed direct to GVA at last assigned and acknowledged FL.
- Descend to FL100 in the GVA HLDG pattern (If already below FL100, climb to FL100 and proceed to GVA).
- Leave GVA HLDG at FL100 and proceed either to SPR or PAS according to RWY in use.
- Maintain FL100 until passing SPR/PAS.
- Carry out a standard instrument approach according to IAC.
- For ACFT equipped with onboard telephone, dial +41 22 798 7600 and mention last RTF channel used.

**SPEED LIMITATION, GENERAL:**

Below FL100 MAX IAS 250kt or as requested by ATC.

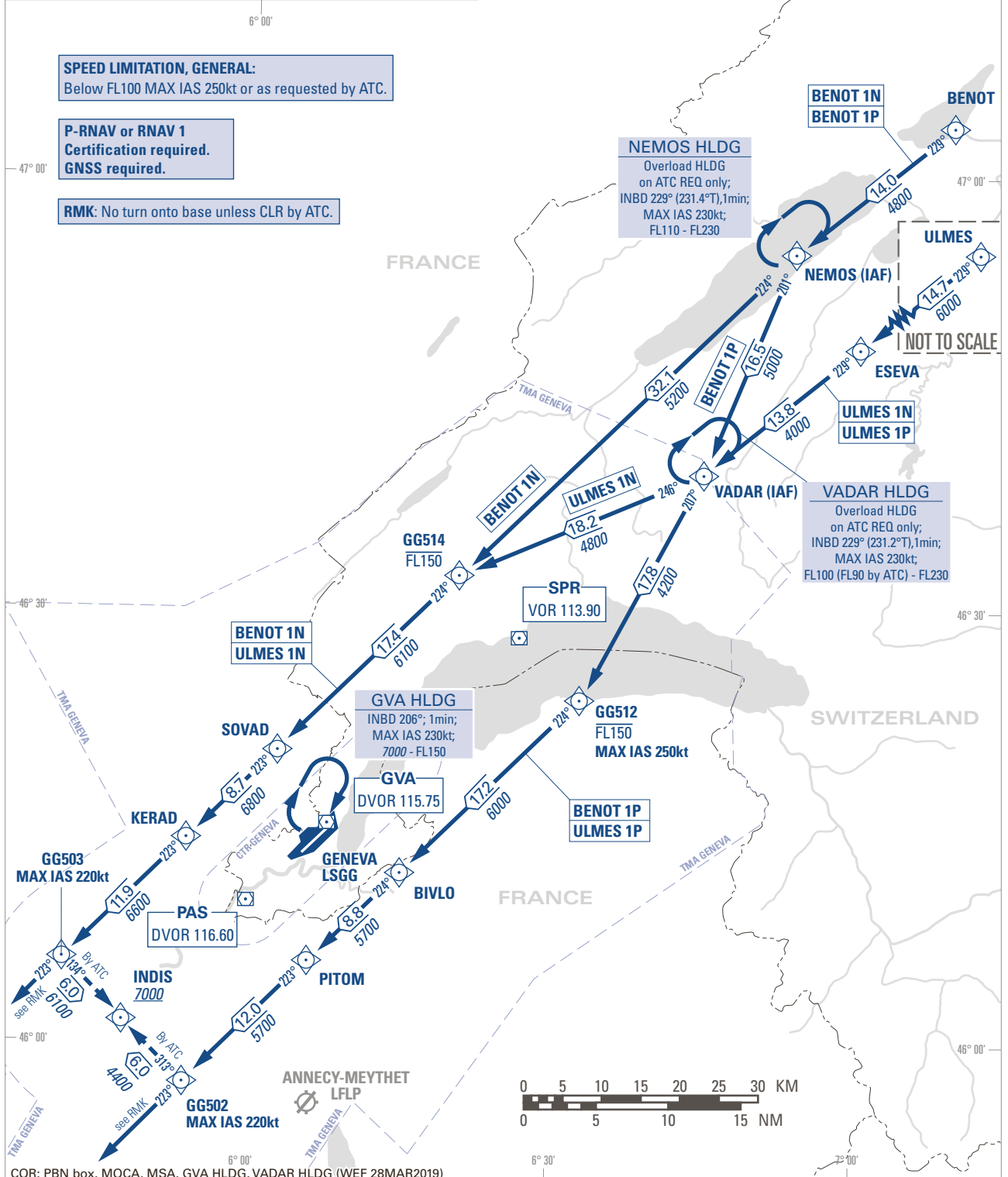
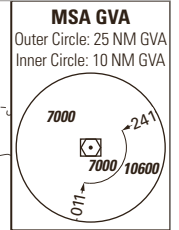
**P-RNAV or RNAV 1**

Certification required.  
GNSS required.

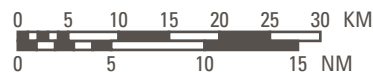
**RMK:** No turn onto base unless CLR by ATC.

VAR 2° E 2018.5

BEARINGS, TRACKS AND  
RADIALS ARE MAGNETIC  
DISTANCES IN NM  
ALTITUDES IN FT



COR: PBN box, MOCA, MSA, GVA HLDG, VADAR HLDG (WEF 28MAR2019)



THIS PAGE INTENTIONALLY LEFT BLANK