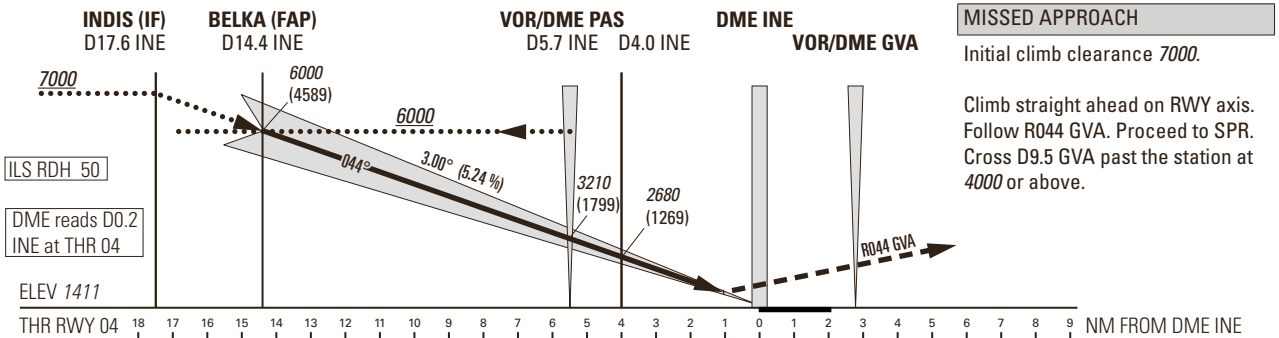
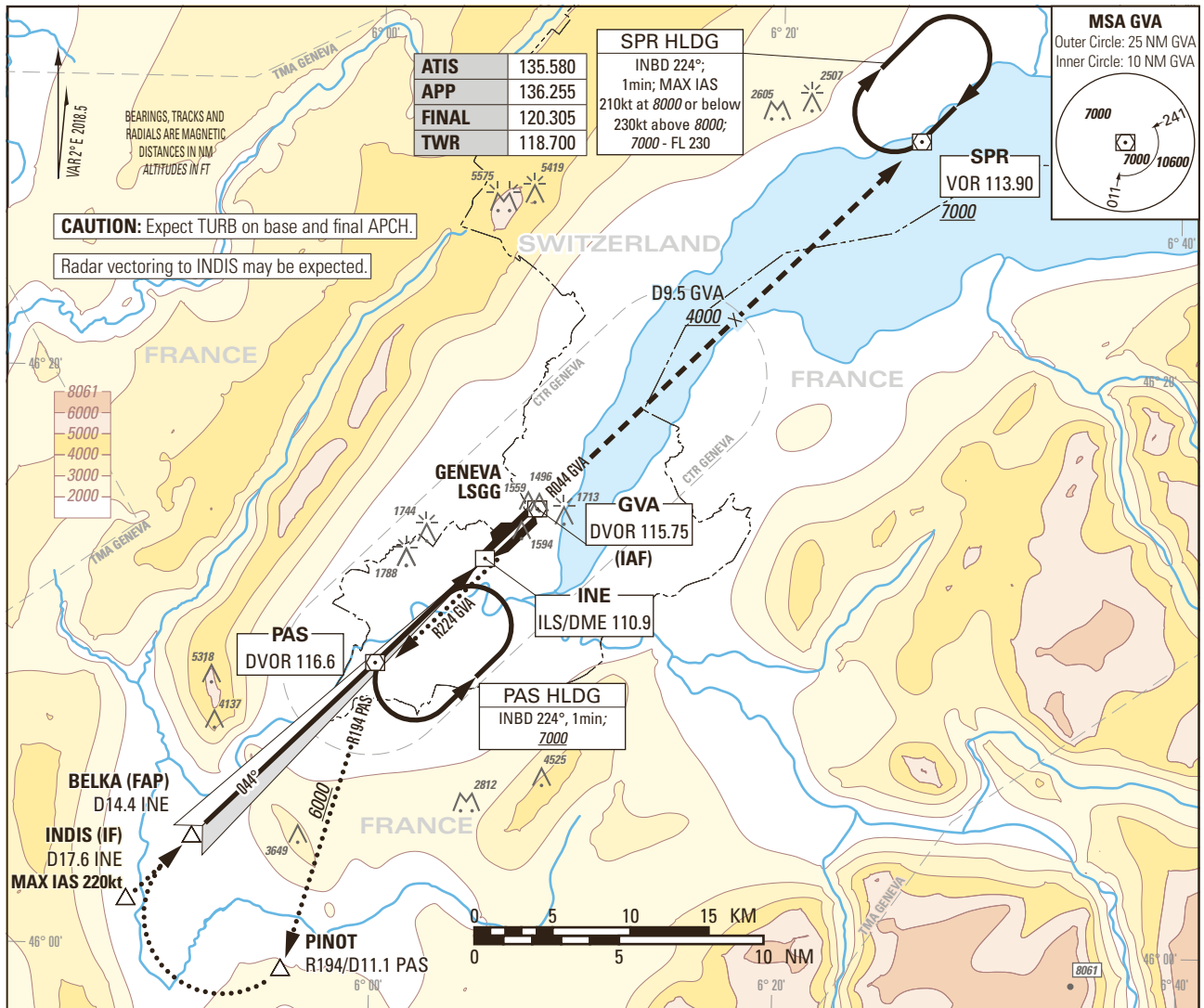


Instrument Approach Chart
(IAC) - ICAO

AD ELEV 1411ft

TRANSITION LEVEL by ATC
TRANSITION ALTITUDE 7000

GENEVA LSGG
ILS RWY 04



OBSTACLE CLEARANCE ALTITUDE (HEIGHT)		A	B	C	D
CAT I	pressure altimeter	1601 (190)	1609 (198)	1617 (206)	1627 (216)
	Straight-in approach				
DECISION ALTITUDE (HEIGHT)		A	B	C	D
CAT I	pressure altimeter	1611 (200)		1617 (206)	1627 (216)
	Circling ¹⁾²⁾	2100 (689)		2400 (989)	

DIST DME INE	16	14	12	10	8	6	4	2
recommended CROSSING ALT	6510	5870	5230	4590	3960	3320	2680	2050

ROD	GS kt	90	110	130	150
	FT/MIN	478	584	690	796

NOTE

- ¹⁾ Circling on request of ATC under special conditions and north of RWY only, speed and radius for category D as for category C aircraft.
- ²⁾ Circling must remain inside CTR at all times.

COR: MSA (WEF 28MAR2019)

THIS PAGE INTENTIONALLY LEFT BLANK