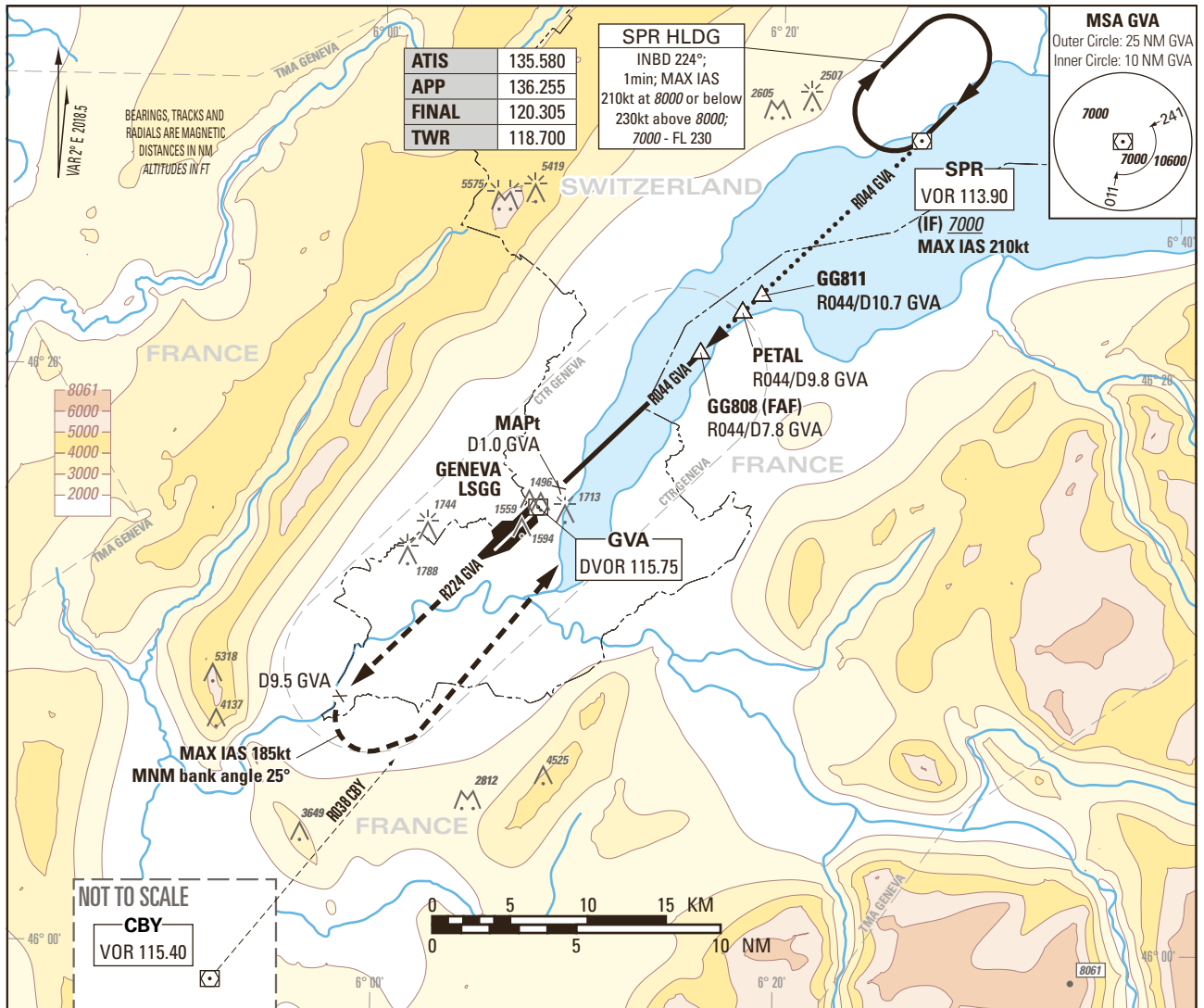


Instrument Approach Chart  
(IAC) - ICAO

AD ELEV 1411ft

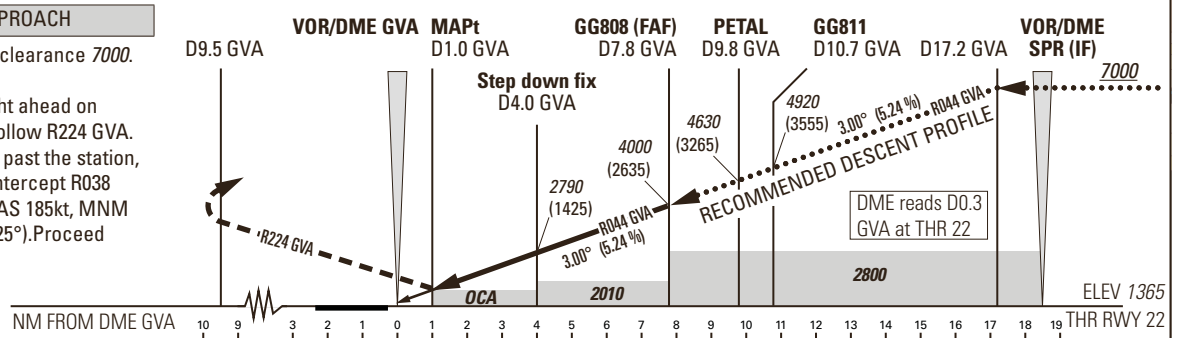
TRANSITION LEVEL by ATC  
TRANSITION ALTITUDE 7000

GENEVA LSGG  
VOR RWY 22



**MISSED APPROACH**  
Initial climb clearance 7000.

Climb straight ahead on RWY axis. Follow R224 GVA. At D9.5 GVA past the station, turn left to intercept R038 CBY (MAX IAS 185kt, MNM bank angle 25°). Proceed to SPR.



OBSTACLE CLEARANCE ALTITUDE (HEIGHT)	Missed APCH climb gradient	A				B				C				D			
		2	4	6	8	10	12	14	16	18	20	22	24	26	28	30	32
Straight-in approach <sup>1)</sup>	2.5%	2070 (705)															
	2.8% to 4500	1830 (465)															
Circling <sup>2) 3)</sup>		2100 (689)								2400 (989)							

ROD	GS kt	90	110	130	150
		FT/MIN	478	584	690

DIST DME GVA	2	4	6	8	10	12	14	16
recommended crossing ALTITUDE (HEIGHT)	2150 (785)	2790 (1425)	3430 (2065)	4060 (2695)	4700 (3335)	5340 (3975)	5970 (4605)	6610 (5245)

**NOTE**  
<sup>1)</sup> Above THR elevation 1365ft, MAPt at 1.3NM THR22 (1.0NM DME GVA).  
<sup>2)</sup> Above aerodrome ELEV 1411ft, circling on request of ATC under special conditions and north of RWY only, speed and radius for category D as for category C aircraft.  
<sup>3)</sup> Circling must remain inside CTR at all times.

COR: MSA (WEF 28MAR2019)

THIS PAGE INTENTIONALLY LEFT BLANK