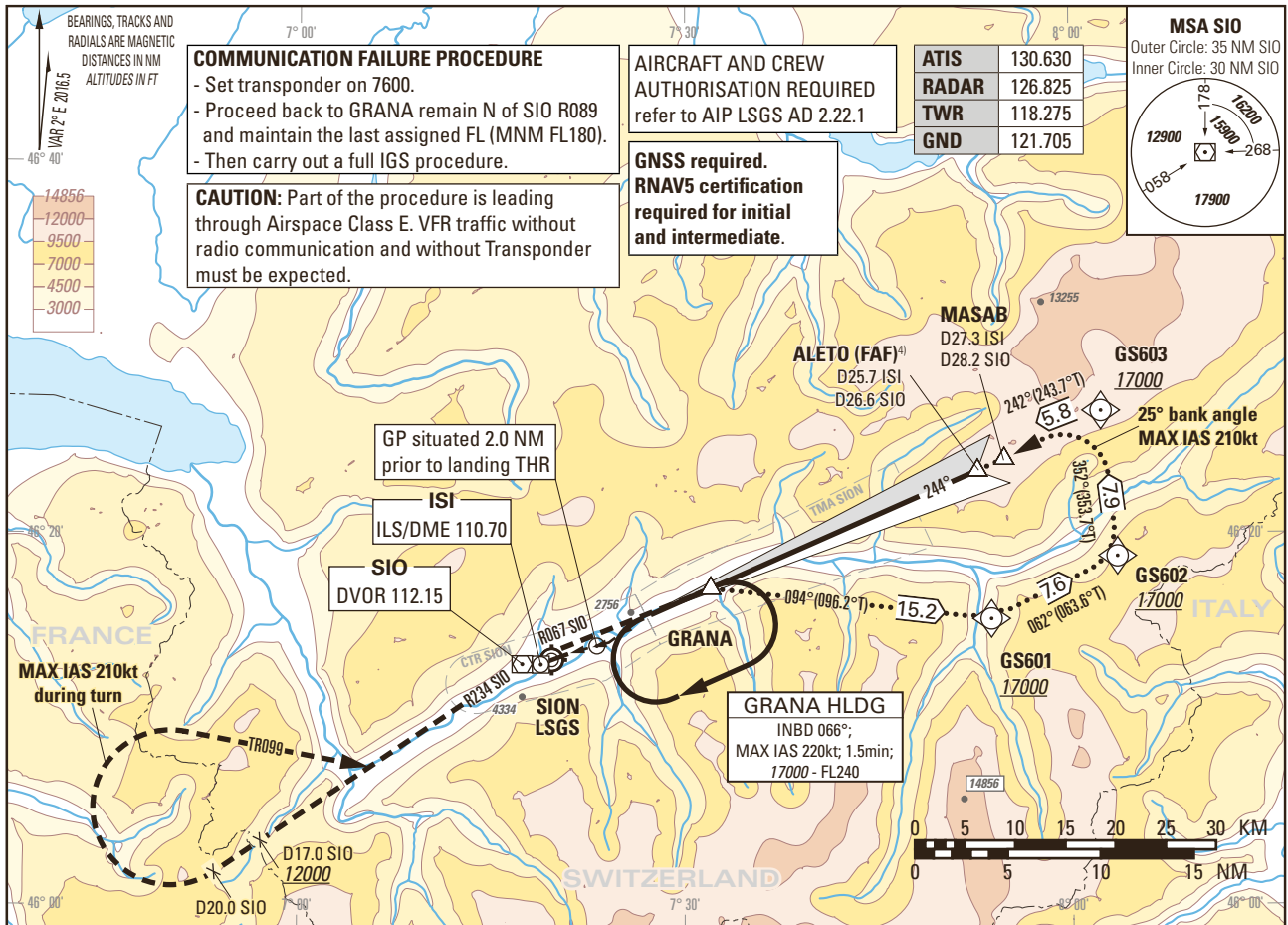


Instrument Approach Chart
(IAC) - ICAO
(IGS instruction: see LSGS AD 2.22)

AD ELEV 1582ft

TRANSITION LEVEL by ATC
TRANSITION ALTITUDE 17000

SION LSGS
IGS RWY 25 (ACFT CAT A/B/C)
OFFSET 6.5° RIGHT
GLIDE PATH 6.0°, VISUAL PART 4.0°



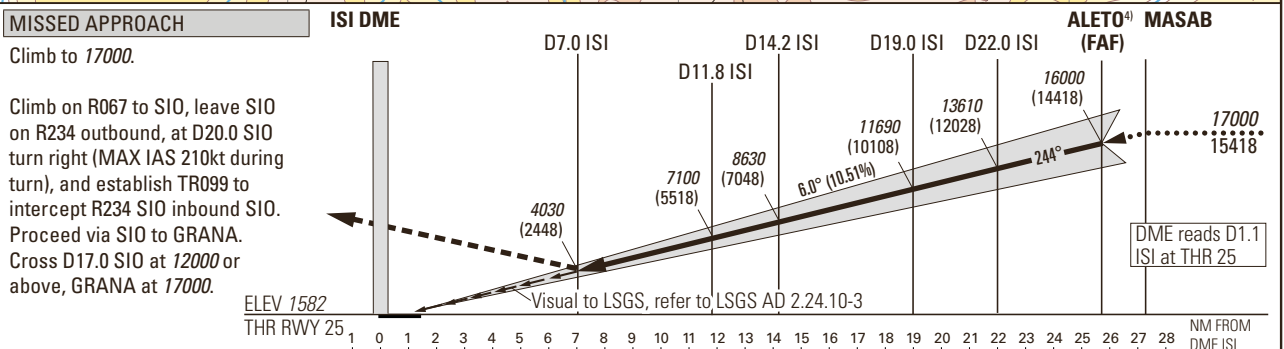
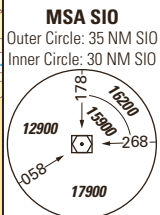
COMMUNICATION FAILURE PROCEDURE
- Set transponder on 7600.
- Proceed back to GRANA remain N of SIO R089 and maintain the last assigned FL (MNM FL180).
- Then carry out a full IGS procedure.

CAUTION: Part of the procedure is leading through Airspace Class E. VFR traffic without radio communication and without Transponder must be expected.

AIRCRAFT AND CREW AUTHORISATION REQUIRED
refer to AIP LSGS AD 2.22.1

GNSS required.
RNAV5 certification required for initial and intermediate.

ATIS	130.630
RADAR	126.825
TWR	118.275
GND	121.705



Missed APCH climb gradient requirement	STRAIGHT-IN APPROACH				VIS m
	A	B	C		
2.5%	6520 (4940) ¹⁾				5000
3.0%	6080 (4500) ¹⁾				
3.5%	5650 (4070) ¹⁾				
4.0%	5220 (3640) ¹⁾				
4.5%	4780 (3200) ¹⁾				
4.9%	4490 (2910) ¹⁾				
Circling north of AD only ^{1) 2) 3)}	3400 (1820)	5040 (3460)	6060 (4480)		5000
ROD	GS kt	90	110	130	150
	FT/MIN	958	1171	1384	1597

	7	8	9	10	12	14	16
DIST ISI	7	8	9	10	12	14	16
DIST THR	5.9	6.9	7.9	8.9	10.9	12.9	14.9
ALT FT	4030	4670	5310	5950	7220	8500	9780
DIST ISI	18	20	22	24	25	25.7	27.3
DIST THR	16.9	18.9	20.9	22.9	23.9	24.6	26.2
ALT FT	11050	12330	13610	14890	15530	16000	17000

REMARK
- APCH PROHIBITED IF GP U/S.
- Table for temperature deviation from ISA. See LSGS AD 2.23.2.
- Final APCH offset 6.5° from RCL.
- If unable to comply with MAX HLDG speed, inform ATC.

CAUTION
- This is not a standard APCH angle.
- 3.8 NM BFR THR 25 Visual Segment Surface (VSS) penetrated by OBST up to 4370ft AMSL.

NOTE
¹⁾ Special training required. ²⁾ Night circling prohibited. ⁴⁾ At ALETO, GP 15970.
³⁾ ACFT categories A, B with speed limit of 125kt and C with speed limit of 135kt.

COR: completely revised (WEF 26MAR2020)

THIS PAGE INTENTIONALLY LEFT BLANK