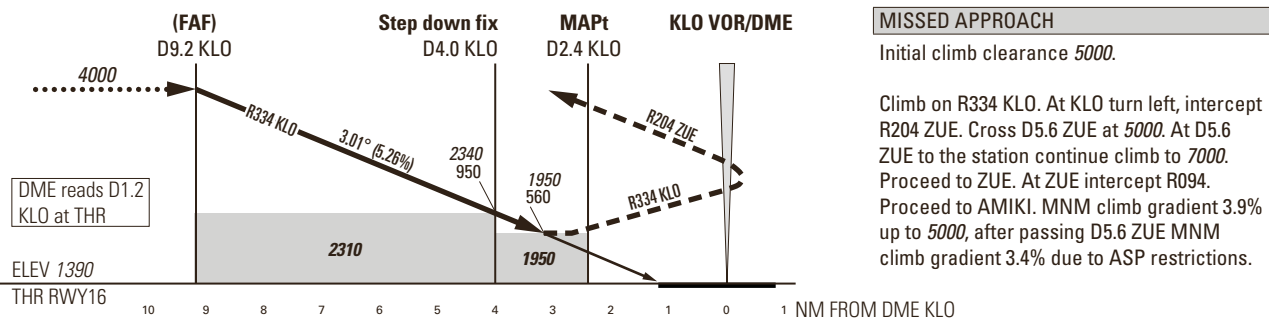
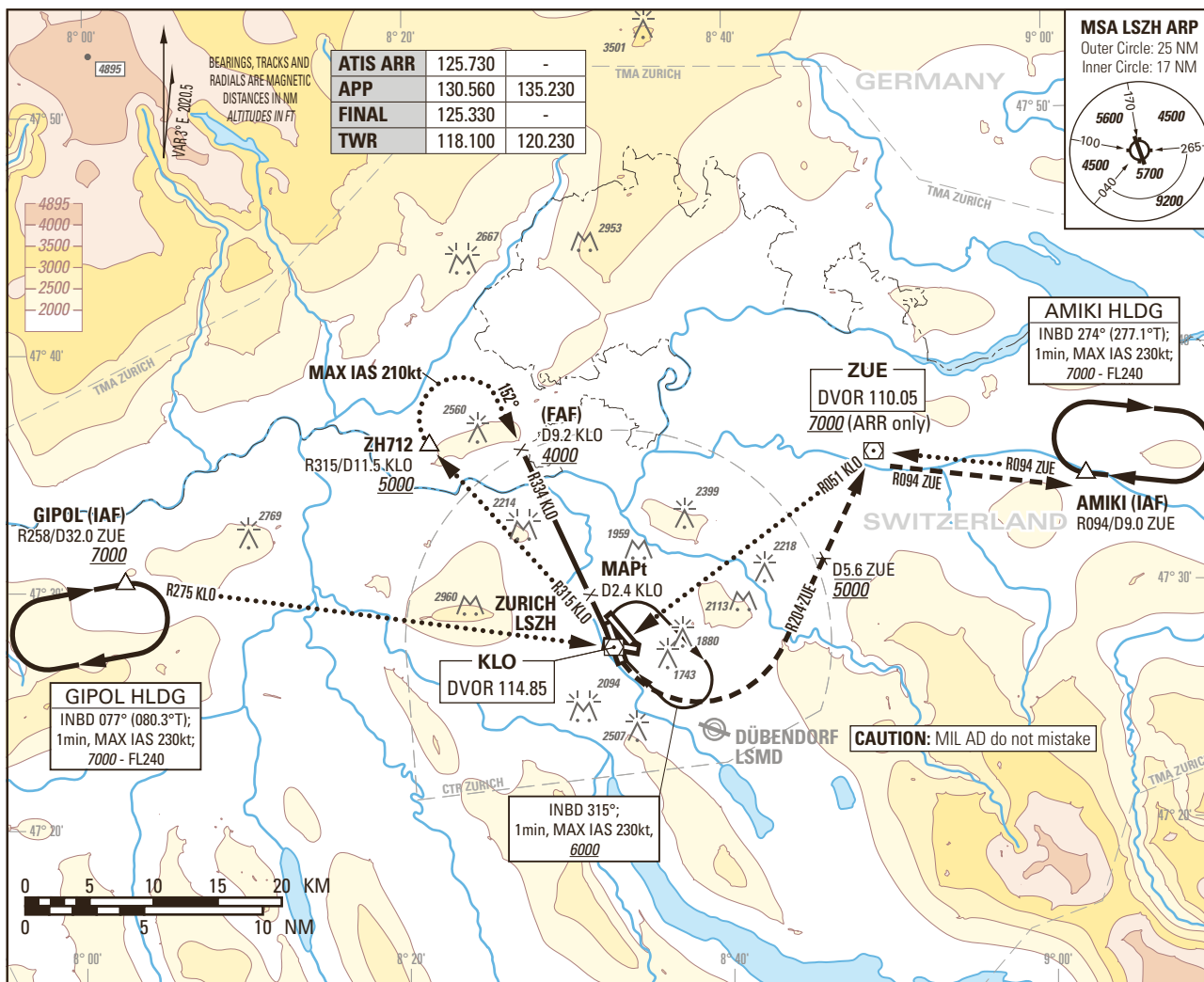


Instrument Approach Chart
(IAC) - ICAO

AD ELEV 1417ft

TRANSITION LEVEL by ATC
TRANSITION ALTITUDE 7000

ZURICH LSZH
VOR RWY 16



| DIST DME KLO | 9 | 8 | 7 | 6 | 5 | 4 | 3 |
|--------------------------|------|------|------|------|------|------|------|
| recommended CROSSING ALT | 3940 | 3620 | 3300 | 2980 | 2660 | 2340 | 2020 |
| recommended CROSSING HGT | 2550 | 2230 | 1910 | 1590 | 1270 | 950 | 630 |

MISSED APPROACH
Initial climb clearance 5000.

Climb on R334 KLO. At KLO turn left, intercept R204 ZUE. Cross D5.6 ZUE at 5000. At D5.6 ZUE to the station continue climb to 7000. Proceed to ZUE. At ZUE intercept R094. Proceed to AMIKI. MNM climb gradient 3.9% up to 5000, after passing D5.6 ZUE MNM climb gradient 3.4% due to ASP restrictions.

| OBSTACLE CLERANCE ALTITUDE (HEIGHT) | A | B | C | D |
|-------------------------------------|------------|---|---|---|
| STRAIGHT-IN APPROACH | 1950 (560) | | | |

| ROD | GS kt | 90 | 110 | 130 | 150 |
|-----|--------|-----|-----|-----|-----|
| | FT/MIN | 479 | 586 | 692 | 799 |

CAUTION
0.8 NM BFR THR16 Visual Segment Surface (VSS) penetrated by trees up to 1580ft AMSL.

COR: Completely revised (WEF 02DEC2021)

THIS PAGE INTENTIONALLY LEFT BLANK