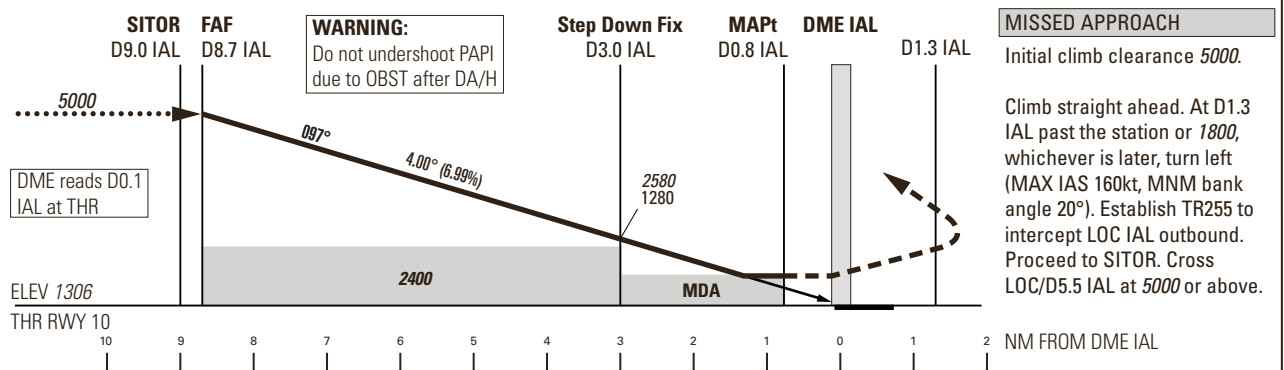
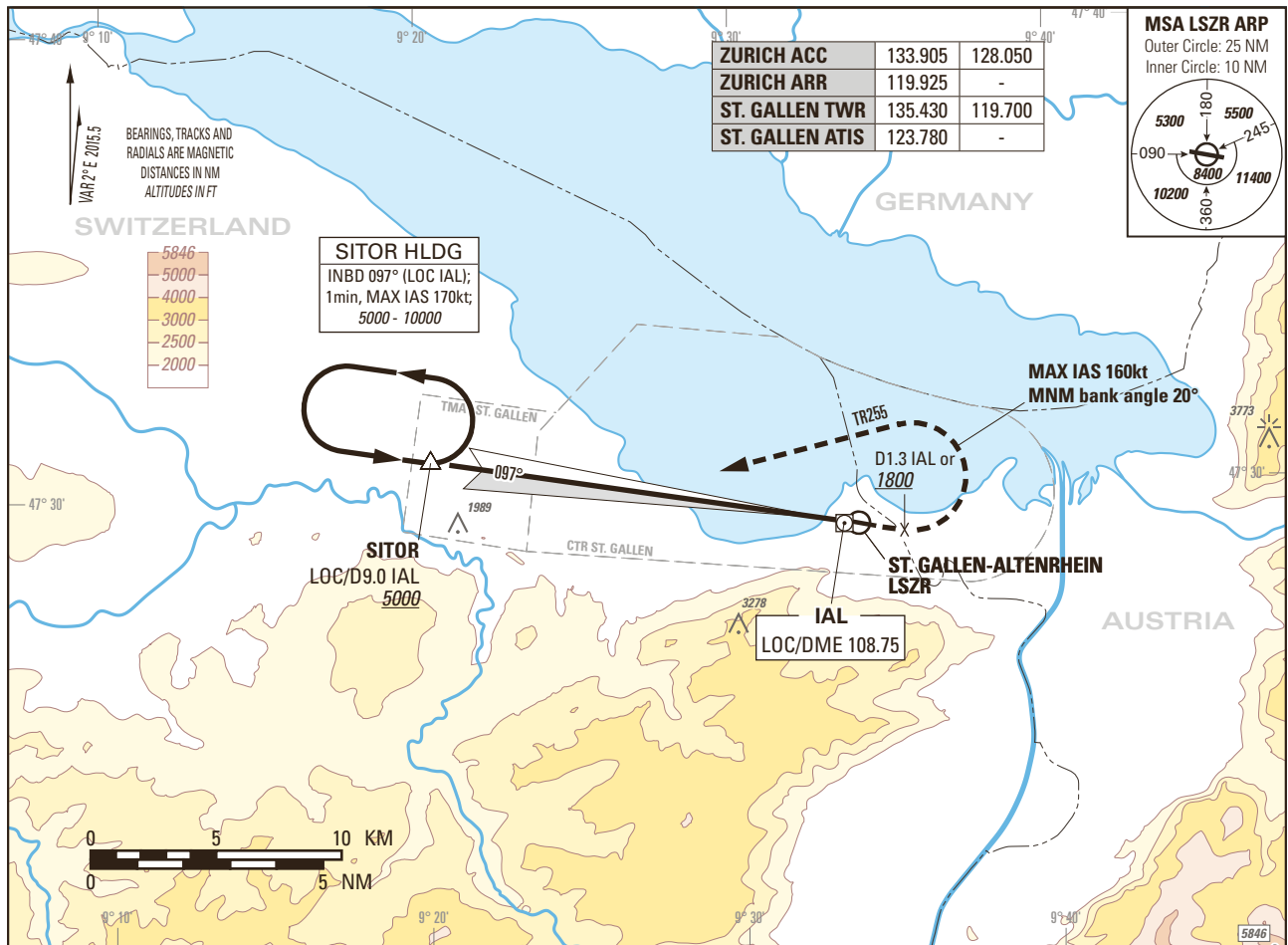


Instrument Approach Chart  
(IAC) - ICAO

AD ELEV 1306ft

TRANSITION LEVEL by ATC  
TRANSITION ALTITUDE 5000

ST. GALLEN-ALTENRHEIN LSZR  
LOC RWY 10, 0.8° OFFSET LEFT  
ACFT CAT A/B/C



OBSTACLE CLEARANCE ALTITUDE (HEIGHT) / OCA (H)	A	B	C
STRAIGHT-IN APPROACH	1720 (420)		
CIRCLING <sup>1) 3)</sup>	2170 (870)		2270 (970 <sup>2)</sup> )
MINIMUM DESCENT ALTITUDE (HEIGHT) / MDA(H)	A	B	C
STRAIGHT-IN APPROACH	1806 (500)		

ROD	GS kt	80	100	120	140	160	180
	FT/MIN	567	708	849	991	1133	1274

**NOTE**

- <sup>1)</sup> Circling north of AP only.
- <sup>2)</sup> MAX IAS 160kt due to airspace.
- <sup>3)</sup> Remain within CTR.

**REMARK**

- Obstacle limitation and restriction according to non-instrument RWY criteria.

**CAUTION**

- 0.2 NM before THR 10 Visual Segment Surface (VSS) penetrated by trees up to 1380ft.  
- This is not a standard approach angle.

DME IAL	8.7	8	7	6	5	4	3	2	1
DIST THR	8.6	7.9	6.9	5.9	4.9	3.9	2.9	1.9	0.9
ALT FT	5000	4710	4280	3860	3430	3010	2580	2160	1730

COR: REMARK (WEF 03DEC2020)

THIS PAGE INTENTIONALLY LEFT BLANK