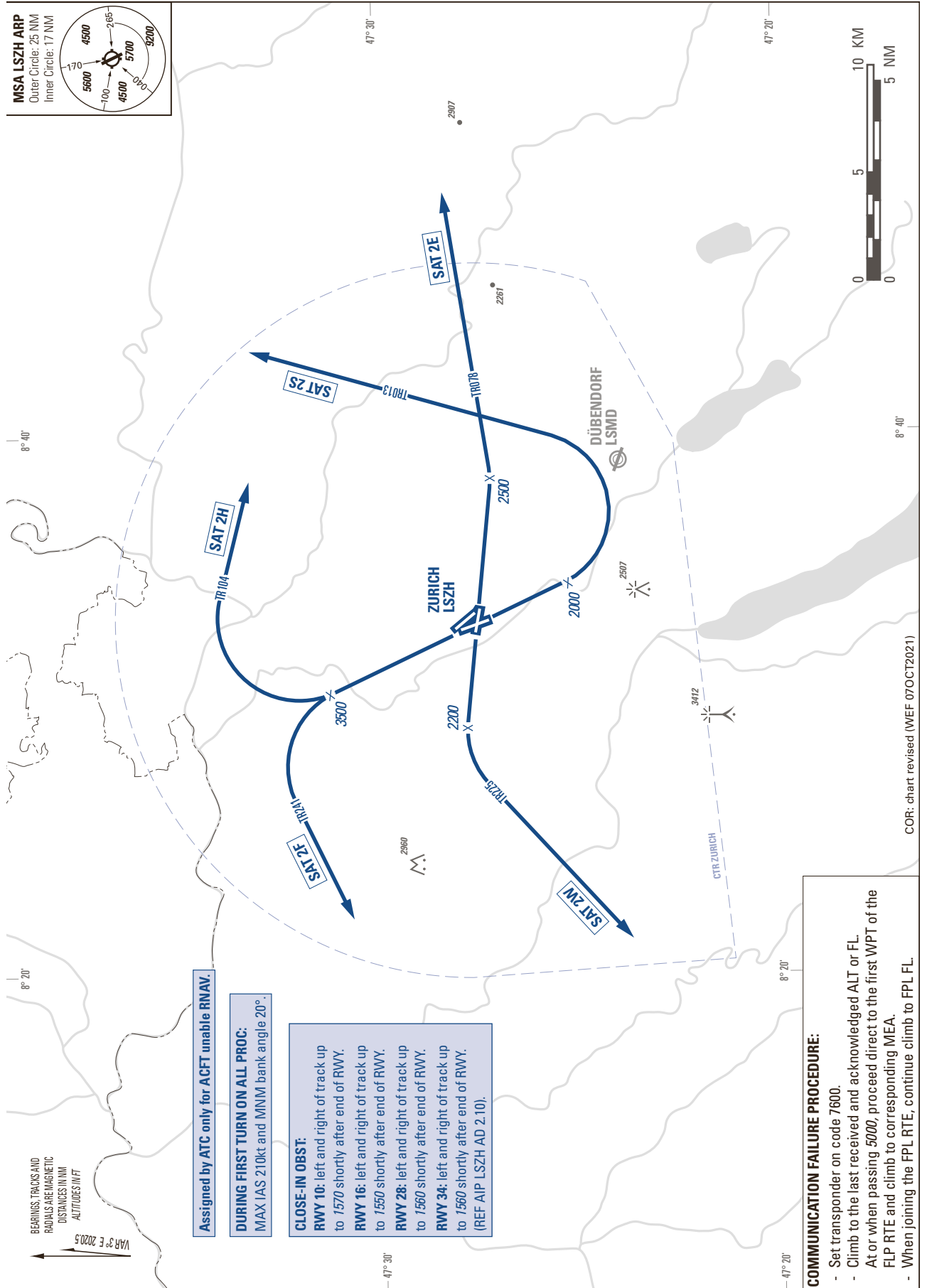
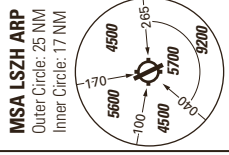


STANDARD INSTRUMENT DEPARTURE CHART (SID) - ICAO

TRANSITION LEVEL by ATC
TRANSITION ALTITUDE 7000

ZURICH LSZH
SID Straight Ahead and Turn
RWY 10, 16, 28, 34



Assigned by ATC only for ACFT unable RNAV.

DURING FIRST TURN ON ALL PROC:
MAX IAS 210kt and MNM bank angle 20°.

CLOSE-IN OBST:
RWY 10: left and right of track up to 1570 shortly after end of RWY.
RWY 16: left and right of track up to 1550 shortly after end of RWY.
RWY 28: left and right of track up to 1560 shortly after end of RWY.
RWY 34: left and right of track up to 1560 shortly after end of RWY.
 (REF AIP LSZH AD 2.10).

COMMUNICATION FAILURE PROCEDURE:

- Set transponder on code 7600.
- Climb to the last received and acknowledged ALT or FL. At or when passing 5000, proceed direct to the first WPT of the FPL RTE and climb to corresponding MEA.
- When joining the FPL RTE, continue climb to FPL FL.

COR: chart revised (WEF 07OCT2021)

THIS PAGE INTENTIONALLY LEFT BLANK