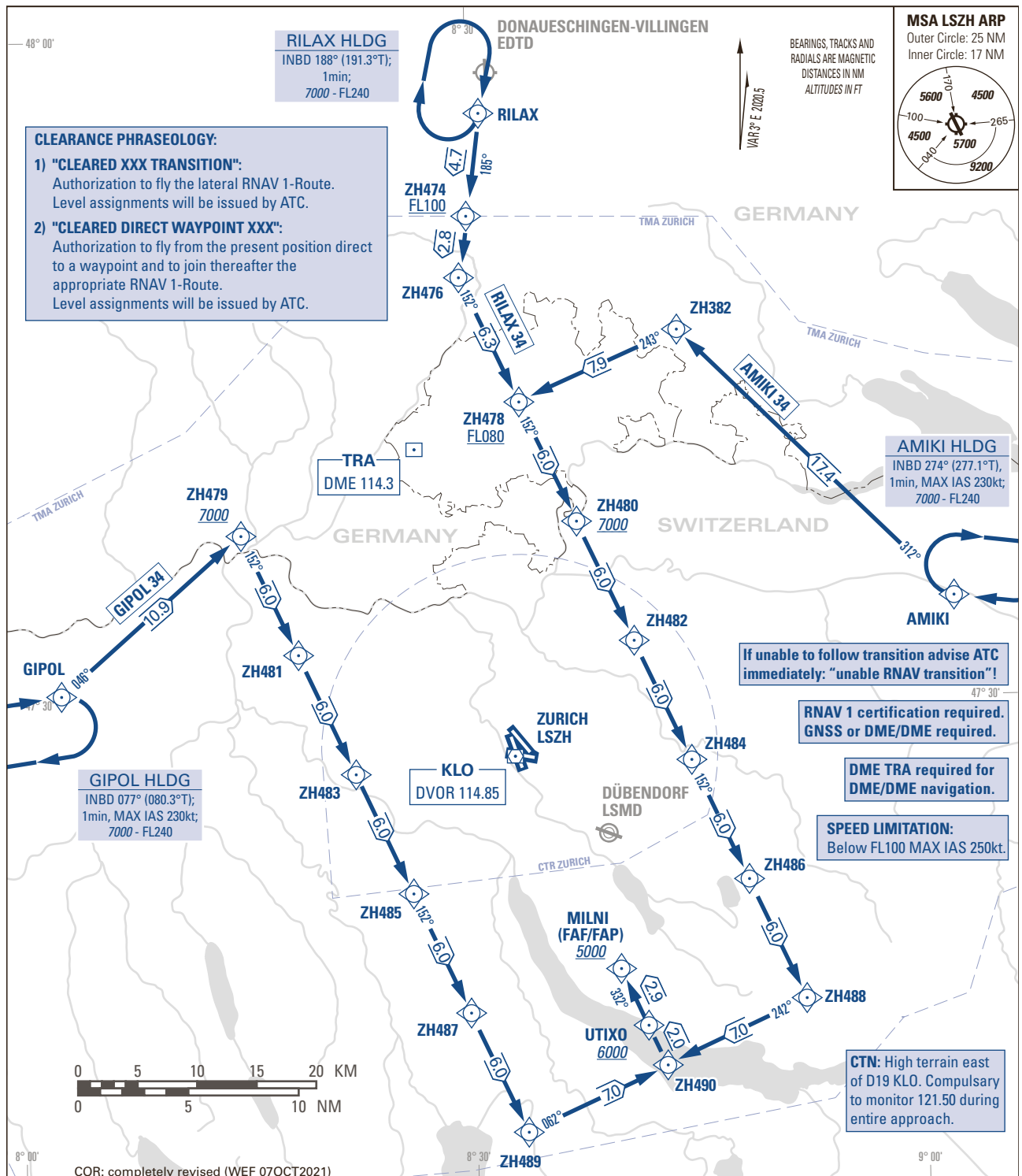


AREA CHART - ICAO

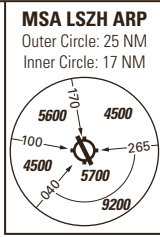
RNAV TRANSITION TO FINAL APPROACH RWY 34

ZURICH LSZH  
RNAV 1



**CLEARANCE PHRASEOLOGY:**

- "CLEARED XXX TRANSITION":**  
Authorization to fly the lateral RNAV 1-Route. Level assignments will be issued by ATC.
- "CLEARED DIRECT WAYPOINT XXX":**  
Authorization to fly from the present position direct to a waypoint and to join thereafter the appropriate RNAV 1-Route. Level assignments will be issued by ATC.



If unable to follow transition advise ATC immediately: "unable RNAV transition"!

RNAV 1 certification required. GNSS or DME/DME required.

DME TRA required for DME/DME navigation.

**SPEED LIMITATION:**  
Below FL100 MAX IAS 250kt.

**CTN:** High terrain east of D19 KLO. Compulsory to monitor 121.50 during entire approach.

**COMMUNICATION FAILURE PROCEDURE:**

- Before reception of a "transition" CLR: Switch transponder code to 7600 and continue FLT in accordance with COM Failure PROC published on relevant STAR Chart.
- After reception of a "transition" CLR: Switch transponder code to 7600 and continue FLT in accordance with lateral description and with respect to the MCA of the PROC with subsequent final APCH of a conventional Standard Instrument Approach Procedure.
- After reception of a CLR direct to a WPT on a transition: Switch transponder code to 7600 and continue FLT direct to the cleared WPT, rejoin transition in accordance with lateral description and with respect to the MCA of the PROC with subsequent final APCH of a conventional Standard Instrument Approach Procedure.
- When being Radar Vektored to a WPT on a transition: Switch transponder code to 7600 and resume own navigation to rejoin transition in the most direct way and proceed in accordance with lateral description and with respect to the MCA of the PROC with subsequent final APCH of a conventional Standard Instrument Approach Procedure.

THIS PAGE INTENTIONALLY LEFT BLANK