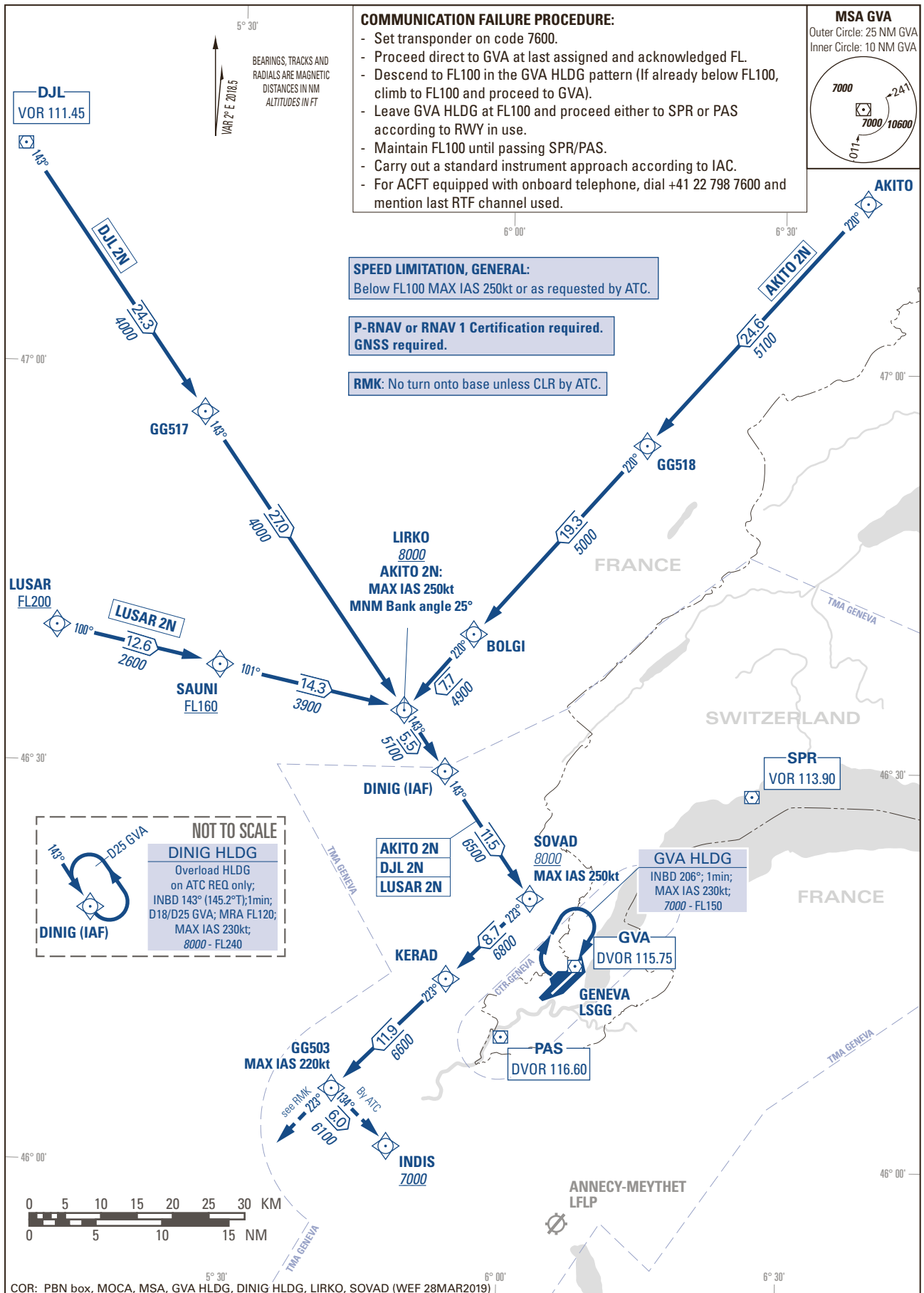


STANDARD INSTRUMENT ARRIVAL CHART  
(STAR) - ICAO

TRANSITION LEVEL by ATC  
TRANSITION ALTITUDE 7000

GENEVA LSGG  
STAR RWY 04 - RNAV  
LUSAR - DJL - AKITO



THIS PAGE INTENTIONALLY LEFT BLANK