

# ENROUTE CHART - ICAO

Switzerland - LSAS, Lower Airspace

Data WEF 04 NOV 2021

**ERC-L**  
FIR: FL 195\*  
GND  
\*1 ED, LO: FL 245

## Route Elements

- General Label for an ATS Route
- Route Designator
- Minimum Altitude in ft AMSL or in Flight Level,
- Magnetic and True Track in Degree
- Distance in Nautical Miles between Points
- Both and One Direction Route
- Cruising Level
- O/R and COMP reporting or fly-by (RNAV) Point
- Point Designator

## Navigation Aids

- O/R and COMP reporting or fly-by (RNAV)
- VOR
  - VOR/DME
  - NDB
  - Ident

## Aeronautical Information

- UIR
- CTA, FIR
- Area Minimum Altitude = 7200 ft AMSL

## Route Categories

- RNAV Route
- Non-RNAV Route
- Conditional Routes**
- CDR 1
- CDR 2
- CDR 3
- CDR 1 and CDR 2
- CDR 1 and CDR 3
- CDR 2 and CDR 3
- By ATC only

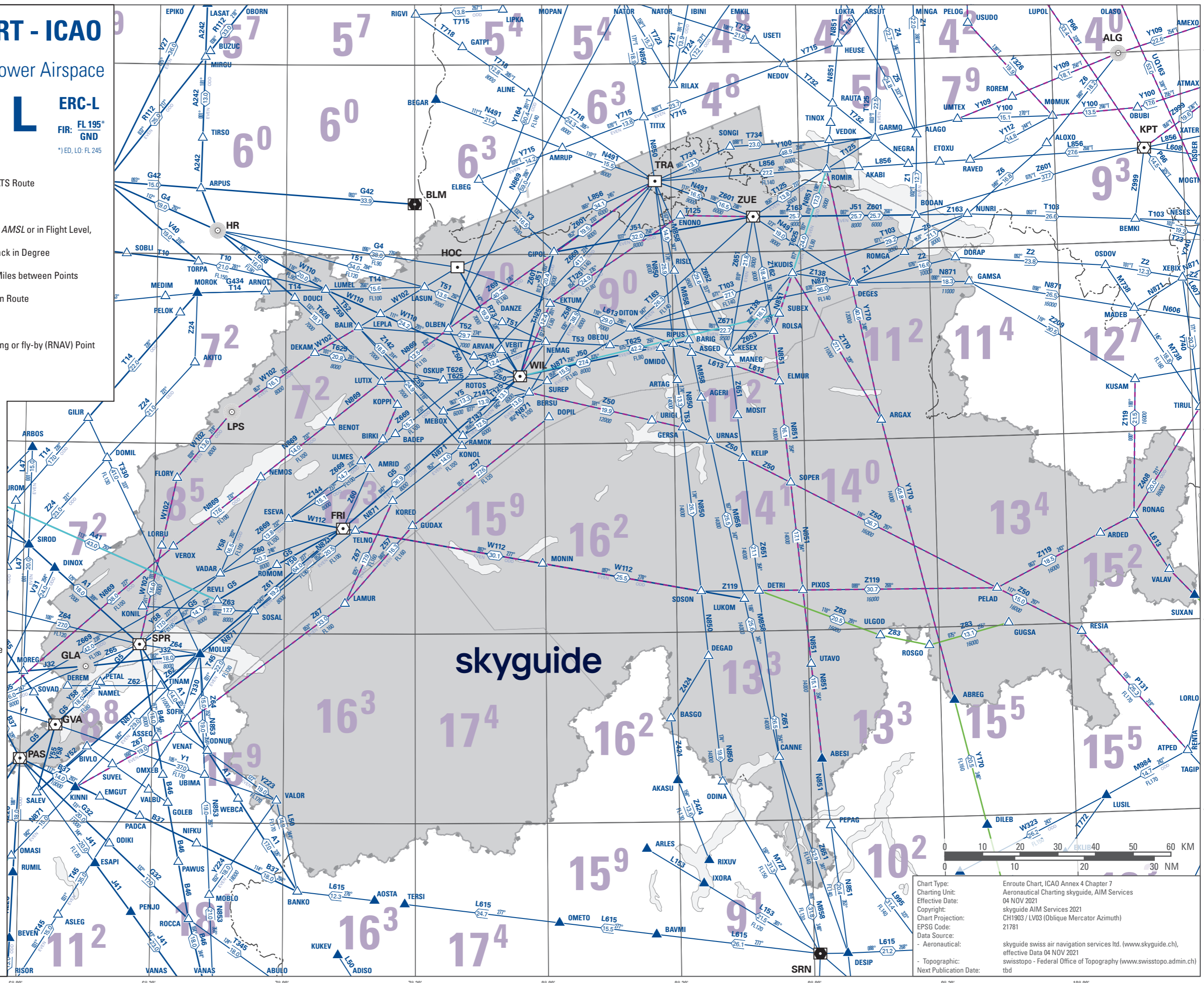


Chart Type: Enroute Chart, ICAO Annex 4 Chapter 7  
Charting Unit: Aeronautical Charting skyguide, AIM Services  
Effective Date: 04 NOV 2021  
Copyright: skyguide AIM Services 2021  
Chart Projection: CH1903 / LV03 (Oblique Mercator Azimuth)  
EPSG Code: 21781  
Data Source: - Aeronautical: skyguide swiss air navigation services ltd. (www.skyguide.ch), effective Data 04 NOV 2021  
- Topographic: swisstopo - Federal Office of Topography (www.swisstopo.admin.ch)  
Next Publication Date: tbd