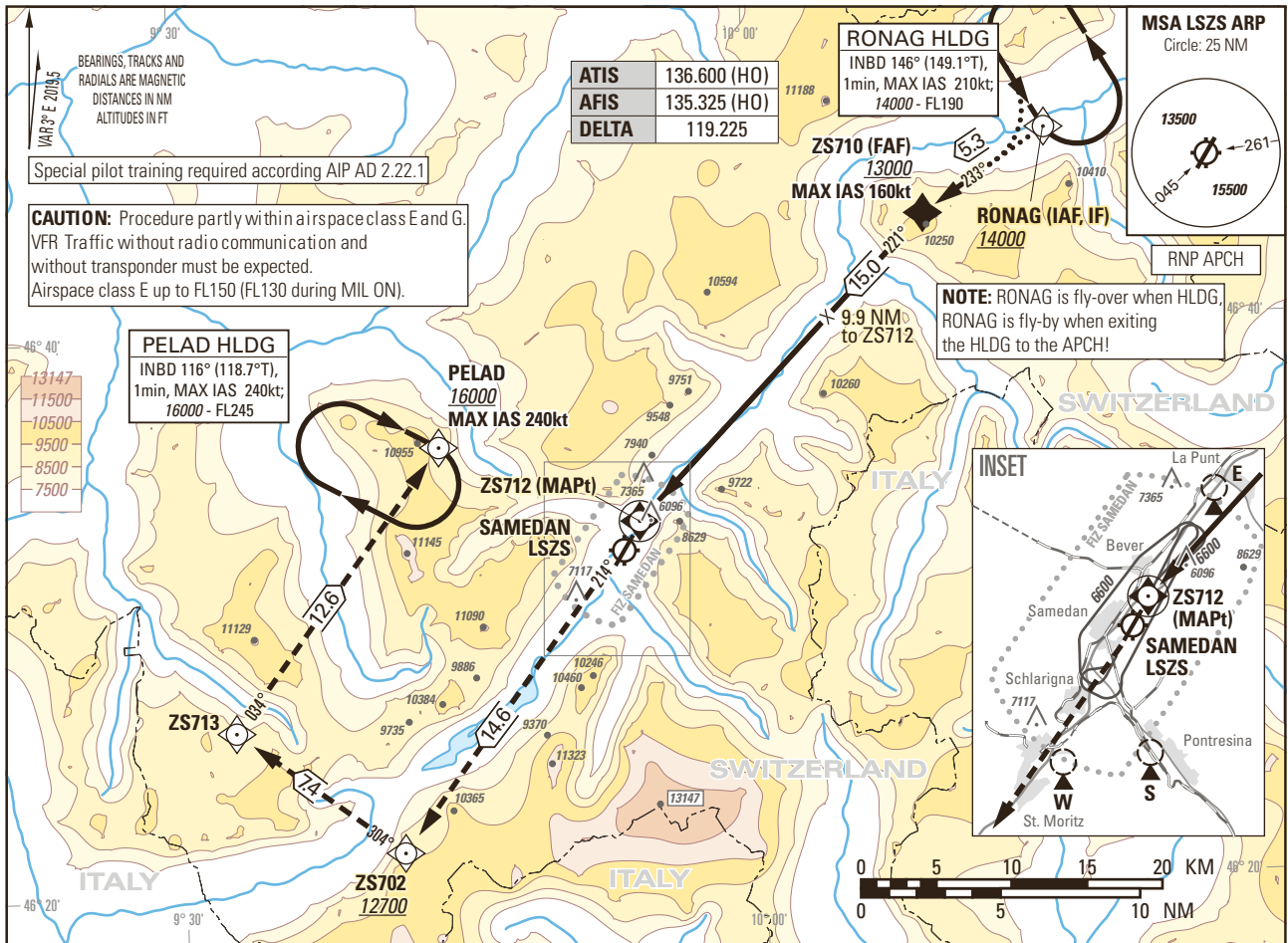


Instrument Approach Chart
(IAC) - ICAO

AD ELEV 5602ft

TRANSITION LEVEL by ATC
TRANSITION ALTITUDE 16000

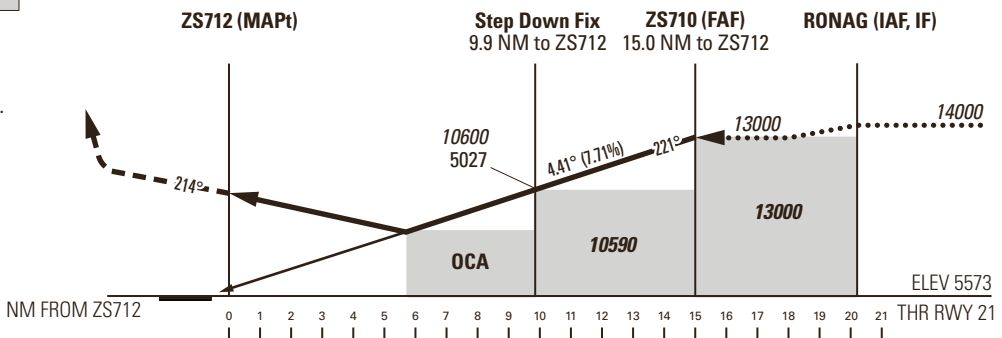
SAMEDAN LSZS
RNP RWY 21
15° OFFSET LEFT
ACFT CAT A/B/C



MISSED APPROACH

Climb to 16000. Proceed via ZS712, ZS702, ZS713 to PELAD. Enter the PELAD HLDG. Cross PELAD at 16000 or above. Minimum climb gradient 4.3% to 12500. Initiate missed APCH no later than 5.5 NM to MAPt.

Note: Level flight to MAPt at OCA(H) prohibited.



Missed APCH climb gradient requirement	NON-ALIGNED STRAIGHT-IN APPROACH		
	A	B	C
	OCA(H) LNAV		
2.5%	9500 (3927)		
4.3% to 12500	8680 (3107)		

DIST ZS712	15	14	13	12	11	10	9	8	7	6
DIST THR	15.8	14.8	13.8	12.8	11.8	10.8	9.8	8.8	7.8	6.8
ALT FT	13000	12530	12060	11600	11130	10660	10190	9720	9250	8780

ROD	GS kt	80	100	120	140	160	180
	FT/MIN	625	781	937	1093	1250	1406

REMARK

- MAX IAS 160kt established no later than FAF.
- ROD 1000ft/min exceeded with GS > 125kt in final approach.
- Approach clearance includes the clearance to leave and re-enter controlled airspace.
- PAPI at 4.40°.

COMMUNICATION FAILURE PROCEDURE

In case of communication failure after having passed the IAF:

- Set transponder on 7600.
- Continue approach.

In case of missed approach perform two HLDG patterns at PELAD.

If radio contact is not re-established, proceed to ALTN AD.

CAUTION

- Altitude adjustments for cold temperature conditions required by the flight crew.
- From 2.4 NM before THR 21 Visual Segment Surface (VSS) penetrated by trees and power lines up to 6690ft AMSL left of RWY centerline.
- **When reaching the OCA(H) and no visual contact to the landing RWY is established and can be maintained, start the missed approach climb without delay and continue to ZS712 (MAPt). Climb via ZS712, ZS702, ZS713 to PELAD.**

COR: chart title (WEF 23APR2020)

THIS PAGE INTENTIONALLY LEFT BLANK