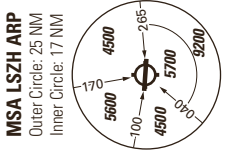
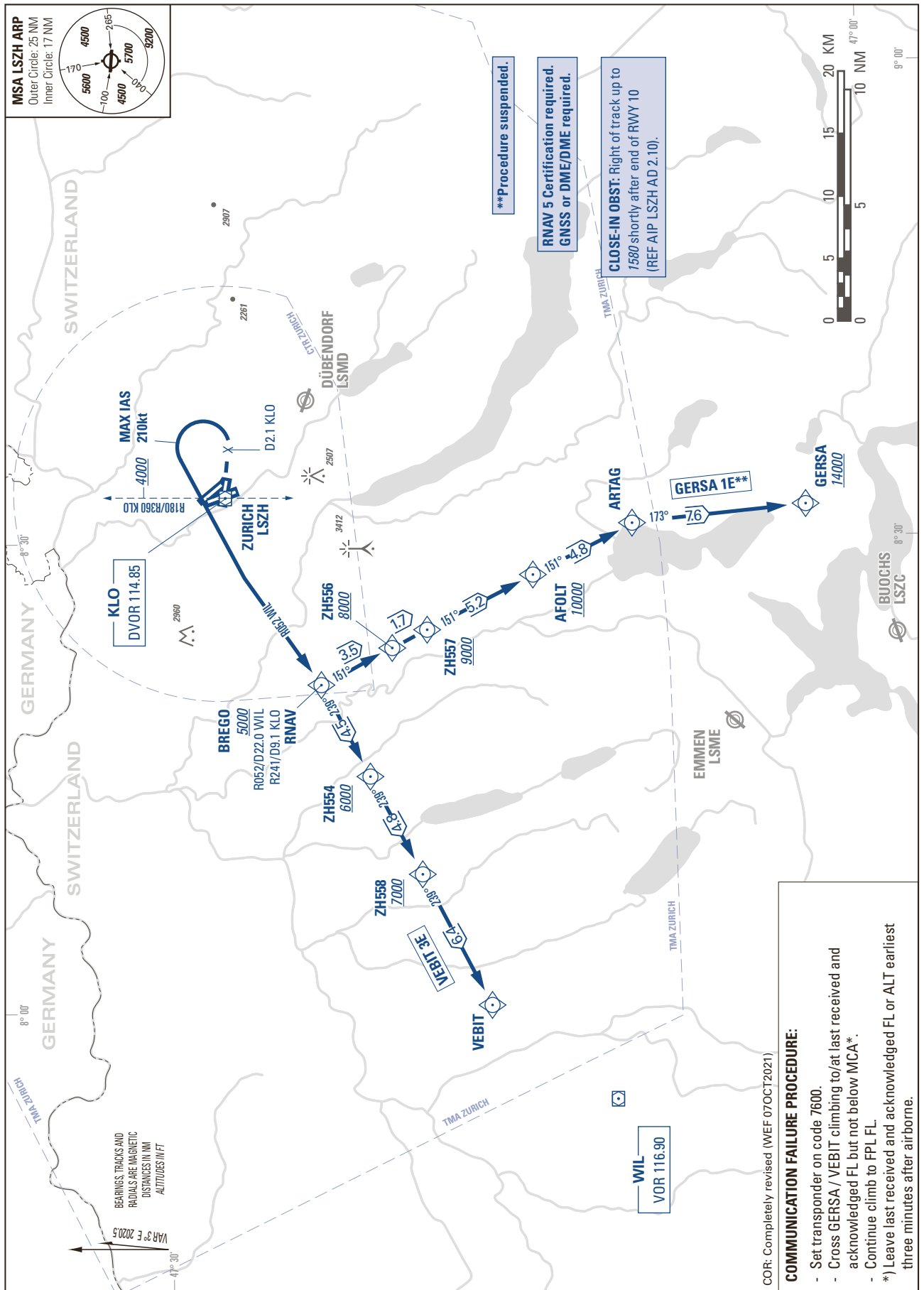


STANDARD INSTRUMENT DEPARTURE CHART (SID) - ICAO

TRANSITION LEVEL by ATC
TRANSITION ALTITUDE 7000

ZURICH LSZH
SID RWY 10 - RNAV 5



COR: Completely revised (WEF 07OCT2021)

COMMUNICATION FAILURE PROCEDURE:

- Set transponder on code 7600.
- Cross GERSA / VEBIT climbing to/at last received and acknowledged FL but not below MCA*.
- Continue climb to FPL FL.

*) Leave last received and acknowledged FL or ALT earliest three minutes after airborne.

THIS PAGE INTENTIONALLY LEFT BLANK